



STAVROS  
NIARCHOS  
FOUNDATION  
CULTURAL  
CENTER

ΚΕΝΤΡΟ  
ΠΟΛΙΤΙΣΜΟΥ  
ΙΔΡΥΜΑ  
ΣΤΑΥΡΟΣ  
ΝΙΑΡΧΟΣ

CALENDAR OF EVENTS

# 04.2018

MUSIC ESCAPADES  
**Plastic Flowers**



**Chamber  
Music  
Society**  
of Lincoln  
Center

JAZZ CHRONICLES  
**Stefanos Andreadis  
Flying Jazz Quartet**

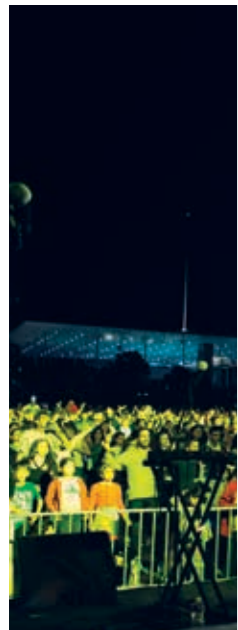


EASTER AT SNFCC  
**Stabat Mater**  
Pergolesi  
**Sacred Jazz**  
Jazz Voyage Group

SNFCC's  
READERS THEATER  
**Ecclesiastes**



EASTER AT SNFCC  
**EPITAPHIOS:**  
Yannis Ritsos – Mikis Theodorakis  
Maria Farantouri



# The many faces of music at SNFCC

Music has no beginning or end, no limits or boundaries - and part of the concept behind the Stavros Niarchos Foundation Cultural Center's event programming is to highlight different genres and manifestations of the Greek music scene, to showcase a curated mix of acclaimed performers and emerging artists from different generations and traditions, and to demonstrate how the many faces of music reflect the diversity of our lives.

To this effect, always complementary to the programming of the Greek National Opera, we have developed an assortment of music series, each with its own distinct profile and audience.

**Music Escapades** presents the new alternative music scene in Greece - April's guests are Plastic Flowers on 22/04. **Jazz Chronicles** introduces us to the world of Greek jazz: The Flying Jazz Quartet performs on 15/04. SNFCC's **Cosmos** concert series explores different musical universes, inspired by Susumu Shingu's eponymous sculpture, which adorns the ceiling of GNO's Stavros Niarchos Hall. **Parklife** concerts on the Great Lawn fill Stavros Niarchos Park with music, providing a wonderful opportunity for visitors to enjoy art in a natural outdoor setting.

The diversity of SNFCC's music offerings is also reflected our **Holy Week concerts**, starting with Pergolesi's *Stabat Mater*, continuing with jazz giant Duke Ellington's *Sacred Concerts* and culminating with Yannis Ritsos and Mikis Theodorakis' *Epitaphios*, performed by Maria Farantouri. Moreover, in our endeavor to highlight outstanding music productions, we collaborate with **major international cultural organizations** to bring their work to the public in Greece. In this context, the renowned Chamber Music Society of Lincoln Center in New York performs for the first time in Greece, presenting its own *Odyssey*, with references to Greek nature, history and mythology, on 11/04.

All these music productions are realized and offered with free entry thanks to the exclusive grant of the Stavros Niarchos Foundation, so that they can be accessible by all, without obstacles or restrictions: We strive to present a rich and varied program of music events for a diverse audience, and we invite you all to make new music discoveries.

# Highlights

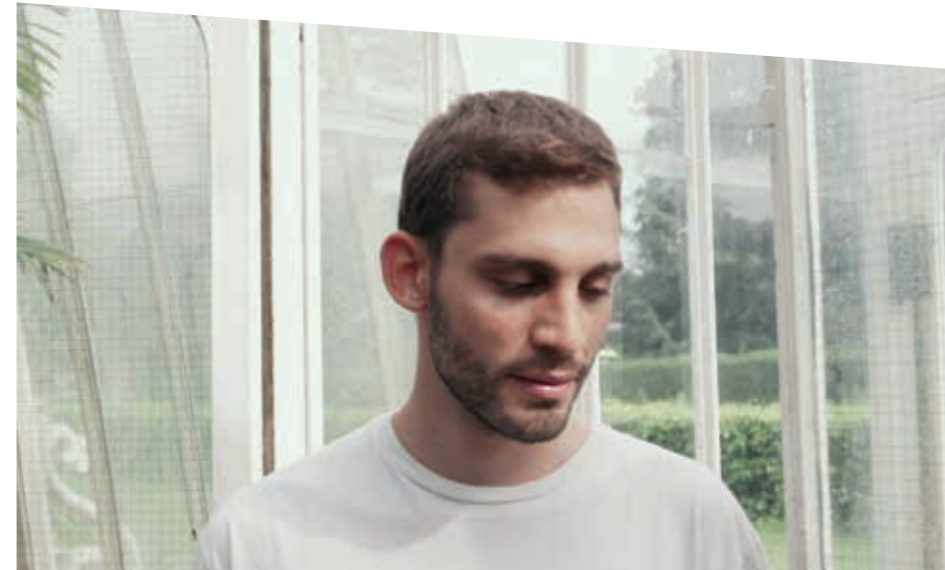
Armonia Atenea – the Friends of Music Orchestra:  
Pergolesi: *Stabat Mater*  
p.04



Chamber Music Society  
p.08



Social Ballroom  
International Dance Day  
p.11



Jazz Chronicles:  
Stefanos Andreadis  
Flying Jazz Quartet  
p.06

Music Escapades:  
Plastic Flowers  
p.07

EPITAPHIOS:  
Yannis Ritsos  
Mikis Theodorakis  
Maria Farantouri  
p.05

Parabases:  
Ecclesiastes:  
Vanitas Vanitatis...  
Featuring Olia Lazaridou  
p.09



GNO Professional  
Dance School  
Performance  
p.10



Easter  
at SNFCC



## Pergolesi: *Stabat Mater*

Armonia Atenea –  
the Friends of Music Orchestra

Holy Monday 02/04 | 20.30 → GNO STAVROS NIARCHOS HALL 13

Armonia Atenea - the Friends of Music Orchestra, directed by award-winning conductor George Petrou, present a wonderful program of Italian Baroque music, culminating in G.B. Pergolesi's celebrated *Stabat Mater*, on Holy Monday. Pergolesi – who composed this piece only a few weeks before his death, at age 26 – humanizes the religious experience through the grieving Mary, as she watches her son suffering on the cross.

Internationally recognized as one of the most important period-instrument Greek music ensembles, this most active orchestra is a leading ambassador for Greek culture.

The centerpiece of the concert, the *Stabat Mater* is complemented by four enchanting concerti by Antonio Vivaldi; their interpretations by the orchestra and soloists have been enthusiastically received in Europe's foremost music venues.

Concert program:

### Antonio Vivaldi:

- Concerto for two violins in A minor RV 522  
Soloists: Sergiu Nastasa, Otilia Alitei
- Bassoon concerto in E minor RV 484  
Soloist: Alexandros Oikonomou
- Mandolin concerto in C Major RV 425  
Soloist: Theodoros Kitsos
- *La Follia*, trio sonata, Opus 1, N.12

### G. B. Pergolesi:

*Stabat Mater*

Soloists: Myrsini Margariti (soprano), Mary-Elen Nesi (mezzo)

Free admission by pre-registration at [www.snfcc.org](http://www.snfcc.org)  
Late seating is only possible during intermission or in the event of a pause.



## Sacred Jazz

Jazz Voyage Group

Holy Tuesday 03/04 | 20.30 → LIGHTHOUSE 14

Featuring six musicians and a singer, the Voyage Jazz Group, fronted by percussionist Alex Christidis, bring sacred jazz music to the SNFCC Lighthouse.

Their program features excerpts of Duke Ellington's magnificent, rarely performed *Sacred Concerts*, as well as a selection of works by other composers.

When jazz music emerged in the early 20th century in the United States, it was characterized by freedom and modernity, causing it to be regarded with suspicion by conservative circles. Yet, not only did jazz eventually go to church, but many jazz compositions became part of worship, and leading jazz musicians composed masterpieces inspired by their relationship to the divine.

## EPITAPHIOS: Yannis Ritsos – Mikis Theodorakis

### Maria Farantouri

Holy Wednesday 04/04 | 20.30 → GNO STAVROS NIARCHOS HALL 13

*My son, flesh of my flesh, dear heart of my heart, little bird in the poor courtyard, blossom in my desert, how is it that your eyes are closed and you do not see my cry, and you do not stir or hear my bitter words?*



Yannis Ritsos' requiem, *Epitaphios*, a long poem of extraordinary solidity and spiritual power set to music by Mikis Theodorakis, is performed by the internationally acclaimed Greek singer Maria Farantouri and the world-renowned Greek opera singer Tasos Apostolou at the Stavros Niarchos Foundation Cultural Center on Holy Wednesday.

They are accompanied by three great soloists: Achilleas Wastor on piano, Hercules Zakkas on bouzouki and Alexandros Botinis on cello.

Through Mikis Theodorakis' music and Maria Farantouri's voice, *Epitaphios* becomes a riveting musical statement of grief and human dignity.

The first part of the concert features the complete *Epitaphios*; in the second part, Maria Farantouri performs poetry set to music by major Greek composers.

Featuring:

Vocals: **Maria Farantouri & Tasos Apostolou**

Piano: **Achilleas Wastor**

Bouzouki: **Hercules Zakkas**

Cello: **Alexandros Botinis**

Free admission by pre-registration at [www.snfcc.org](http://www.snfcc.org)  
Late seating is only possible during intermission or in the event of a pause.



**Stefanos Andreadis**  
Flying Jazz Quartet

Sunday 15/04 | 21.00 → LIGHTHOUSE 14

**Having recently released its second album, *To Eternity*, Flying Jazz Quartet, fronted by guitarist, composer and Ionian University professor Stefanos Andreadis, is the next guest of SNFCC's Jazz Chronicles concert series.**

Together with Andreadis' longtime friend and collaborator, George Kontrafouris, on Hammond Organ, fabulous trumpeter Andreas Polyzogopoulos and drummer extraordinaire Vassilis Podaras (Ionian University Jazz Department graduate and Andreadis' former student), Andreadis leads Flying Jazz Quartet to Mediterranean soundscapes.

Their music showcases the Hammond's deliciously electric sound, with lyricism, intimacy, originality and finesse, paying homage to jazz tradition while infusing it with a distinct Greek flavor.

Guitar-composition: **Stefanos Andreadis**  
Hammond Organ: **George Kontrafouris**  
Trumpet: **Andreas Polyzogopoulos**  
Drums: **Vasilis Podaras**

**Music Escapades presents Plastic Flowers - George Samaras' personal Dream-Pop act, who contribute their intense lo-fi aesthetics and colorful sounds to the alternative contemporary Greek music scene.**

**Plastic Flowers**

Sunday 22/04 | 21.00 → LIGHTHOUSE 14

At SNFCC, George Samaras presents an overview of his releases in a minimalist set. On stage with him, Filip Raskovic on synth and percussion.

Plastic Flowers started in 2011, and *Evergreen*, their first LP album, was released in 2014, bringing to the fore the pop side of the band.

The period between 2016 and 2018 was prolific for Samaras, who released two more albums and two EPs, recorded by him exclusively in various small music venues in London. The follow-up to *Evergreen*, *Heavenly* ventures further into Dream-Pop trails, while his new album, *Absent Forever*, marks a darker approach by the Greek artist.

George returns in 2018, with a series of live performances in Greece and other European countries, as well as the release of another jazz-tinged EP. Featured in *USA Today*, *Noisey*, *Clash*, *Earmilk*, *Exclaim*, he has built a large online following as part of an international shoegaze community that continues to flourish through home-made recording and the DIY culture.





## **Odyssey:** The Chamber Music Society of Lincoln Center in Greece

Wednesday 11/04 | 20.30 → GNO ALTERNATIVE STAGE 13

**The Chamber Music Society of Lincoln Center, (CMS) the largest producing and presenting chamber music organization in North America, makes its debut in Greece at the Stavros Niarchos Foundation Cultural Center with a program inspired by traditional and timeless facets of Greek culture.**

Through the sound of the solo flute, Debussy's *Syrinx* evokes the magic of Greek mythology; the festivities of Greek weddings are depicted in Ravel's *Five Melodies for Voice and Piano*; the tradition of open air performance is illustrated by Beethoven's *Serenade*; and finally, Mendelssohn's classic *Octet* represents the same quest for symmetry and balance that produced Greece's most iconic monuments.

Furthermore, in its first ever international production, the award-winning North American television series *Live From Lincoln Center* will join CMS, in cooperation with ERT, to film this performance at the SNFCC. This is the first stop on a musical journey that will take CMS to Athens, Pelion, and other places in Thessaly, to be later broadcast on public television stations in the U.S. and Canada, Greece and Cyprus.

- The event is jointly organized by SNFCC and CMS.
- All CMS events in Greece are produced thanks to exclusive support from the Stavros Niarchos Foundation.

*Free admission by pre-registration at [www.snfcc.org](http://www.snfcc.org)  
Late seating is only possible during intermission or in the event of a pause.*



## Parabases: SNFCC's Readers Theater



## **Ecclesiastes:** Vanitas Vanitatis...

featuring **Olia Lazaridou**

Sunday 01/04 | 19.30 → LIGHTHOUSE 14

Director: **Efi Theodorou**  
Translation: **Alexandros Issaris**  
Harpsichord: **Alexis Mastichiadis**

*Late seating is only possible if there is an intermission.*

**In April, Parabases, SNFCC's Readers Theater, presents a landmark of world literature - Ecclesiastes. Of unknown authorship, it is believed to have been written in the second half of 3rd century B.C.**

The Ecclesiastes is part of both the Hebrew Tanach and the Christian Old Testament. Written in a peculiar form of Neo-Hebrew and using many Aramaic and Greek words, Ecclesiastes (Kohélet in the original, feminine active participle, hence also found as Ecclesiastria) is the wise teacher, the preacher, the one who presides over a religious gathering, the leader of a group of wise men and intellectuals addressing the public, preaching questioning and skepticism.

*Vanity of vanities, says the Preacher, vanity of vanities! All is vanity. A distillation of experience and study, the ideas in Ecclesiastes appeal to the reader and offer practical advice. The main question posed in Ecclesiastes is a question to all mankind: What has a man from all the toil and striving of heart with which he toils beneath the sun?*

"I am not aware of any other book in world literature that deals so extensively, exclusively and incisively with the futility of this world and ephemerality of human existence," notes the Greek translator of Ecclesiastes, Alexandros Issaris.

Oscillating between poetry and rhythmic prose, and through a sequence of an almost free-association thought process, the author meditates on human destiny as a self-taught philosopher who goes beyond dogmatic theology. Thoughts in Ecclesiastes hark back to Stoic philosophers, Epicurus, Eastern philosophy.

This seminal text, its ideas and contradictions, never ceased to inspire writers, poets and thinkers through the centuries. Excerpts from Ecclesiastes can be found in literature and vocal music of all genres, as its expressive power and relevance of themes never fail to touch people.

*There is nothing new under the sun*

### **Bibliographic reference (in Greek):**

Title: Ecclesiastes, Vanitas Vanitatis...  
Introduction, commentary: M.Z. Kopidakis  
Translated into Greek by Alexandros Issaris  
Publisher: Olkos  
First edition: 1994  
Current (5th) edition: 2018



## GNO Professional Dance School Performance

Monday 16/04 | 20.00 → GNO STAVROS NIARCHOS HALL 13

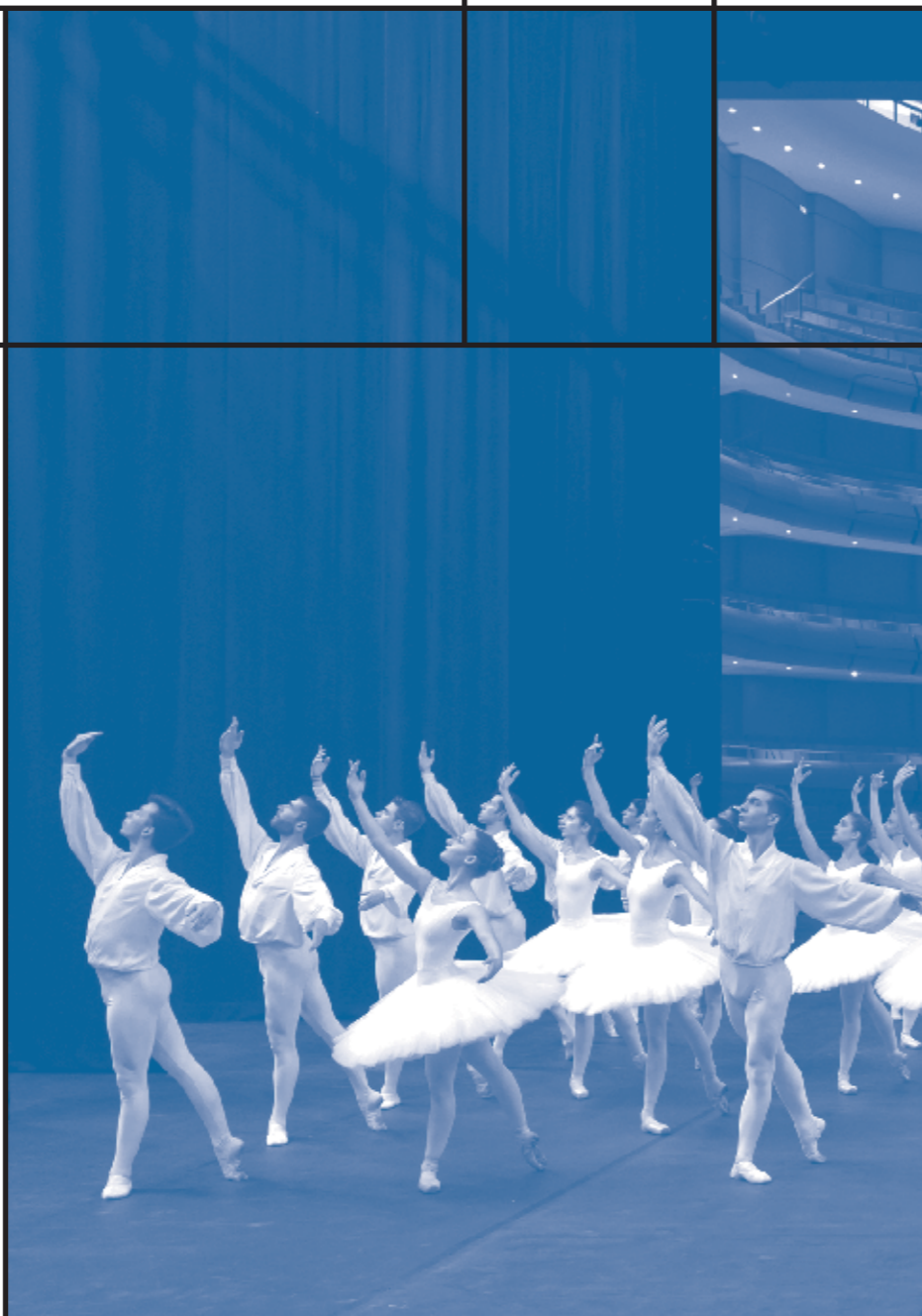
Students of the GNO Professional Dance School, under the guidance of the professors and pianists of the School, perform classical and contemporary choreographies by:

Yiannis Dontsakis  
 Markella Manoliadou  
 Lela Chatzieleftheriou  
 Daphne Stathatou  
 Yannis Tsigris  
 George Papadopoulos  
 Eri Tzortzi  
 Maria Tsiggistra  
 Maria Papakonstantinou  
 Eleftheria Agapaki  
 Lukas Theodosopoulos

The audience will have the opportunity to meet the dancers of tomorrow and get introduced to the work of the next generation of choreographers.

Artistic supervision: **Yiannis Dontsakis**

Free admission by pre-registration at [www.snfcc.org](http://www.snfcc.org)



Social Ballroom series has something special for our monthly meet!

## Social Ballroom: Still Got the Blues International Dance Day

Sunday 29/04 | 19.00 → LIGHTHOUSE 14

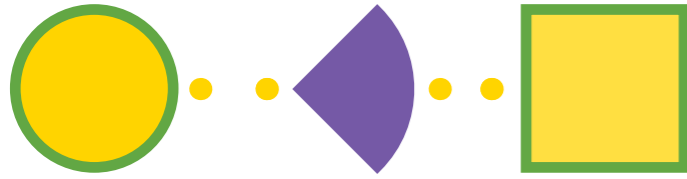
On the International Dance Day, observed on the birth anniversary of French dancer and choreographer Jean-Georges Noverre (1727-1810), a pioneer of modern ballet, SNFCC's Social Ballroom gives everyone the opportunity to get to know one of the most expressive art forms, featuring a tribute to the Blues!

Slow Drag is a Blues and Swing slow-tempo dance form popular in Harlem's African-American communities during rent parties. Expressivity, sensuality and freedom of movement are some of the qualities that make this dance style magical.

Jump & Jive Athens Swing Team shows us how to dance it, in an introductory class to prepare us for fun at the party coming up right after the class! Jumping Bones – one of the most popular acts in the Greek blues scene – make us want to dance to their live Rhythm and Blues, enriched with contemporary West-Coast Blues elements, while DJ Elena Evangelia adds blues, jazz and R&B into the mix!

Celebrate dance with us in an evening full of Blues music and positive energy.



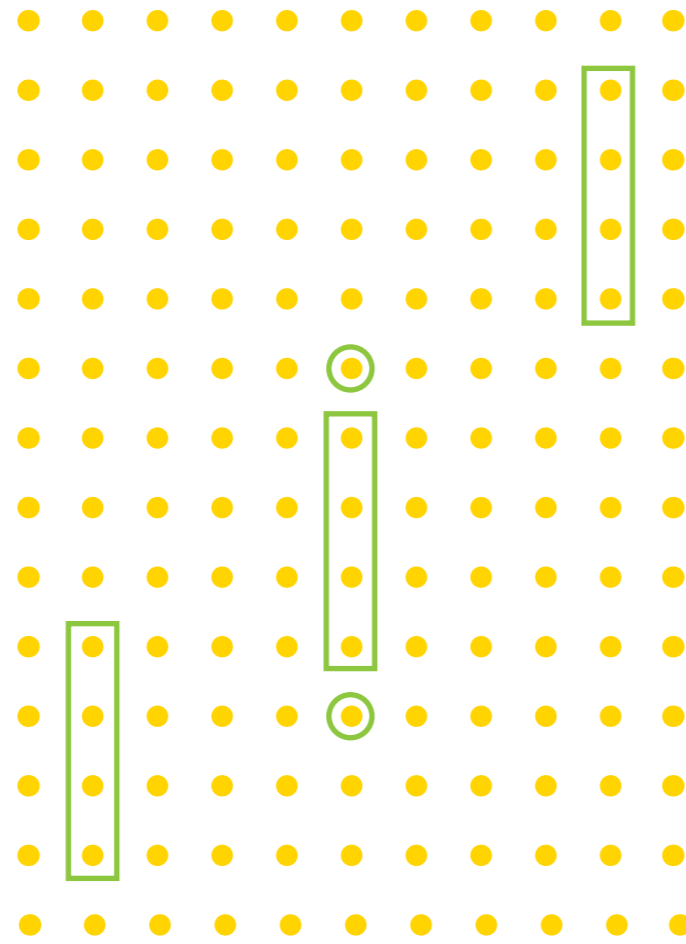
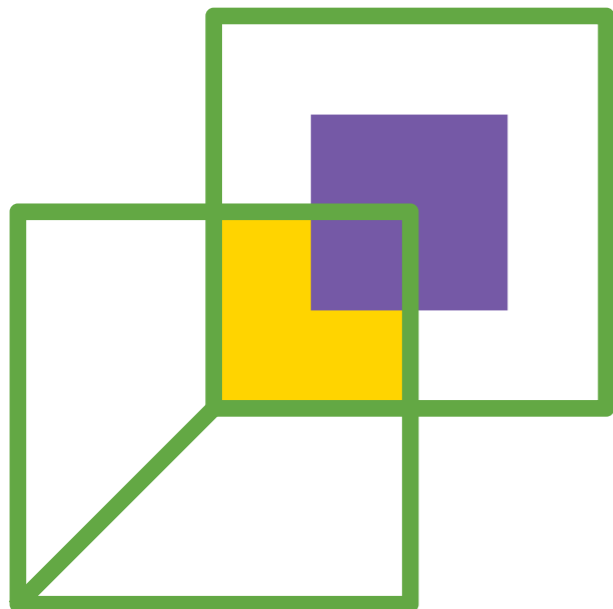


## Redesigning Educational Systems: From Theory to Praxis

26 & 27/04 | 17.45 → LIGHTHOUSE 14

The two-day Forum is being organized by Fulbright Foundation in collaboration with the American Community Schools of Athens (ACS Athens) and the Stavros Niarchos Foundation Cultrual Center as part of Fulbright's 70 years of educational and cultural exchanges between Greece and the United States.

The event will be held in English with a simultaneous translation in Greek.  
For additional information please visit [SNFCC.org](http://SNFCC.org)



Academic leaders and Educators from K-12 and Higher Education institutions will join leaders from the business world for two days of critical discussion about the kinds of learners the world needs today and whether academic institutions are preparing their students for the challenges of our rapidly changing world.

The two-day Forum aims to highlight the importance of developing educational systems that will enable students to become productive, responsible, civic-minded global citizens, ready to contribute proactively to societies in transformation.

### 26/04, 17.45–21.00

*Redesigning Educational Systems: From Theory to Praxis*

Panel discussion featuring distinguished personalities from the academic and business worlds

#### Keynote speaker:

Allan Goodman, President, Institute of International Education, New York

### 27/04, 17.45–21.00

*Preparing youth to be responsible, engaged citizens of the world*

Panel discussion featuring distinguished American and Greek educationalists

#### Guest speaker:

Edward Burger, President, Southwestern University, Georgetown, Texas



The Stavros Niarchos Foundation, presents the sixth installment of its DIALOGUES series.

## DIALOGUES

Wednesday 25/04 | 17.30 → LIGHTHOUSE 14

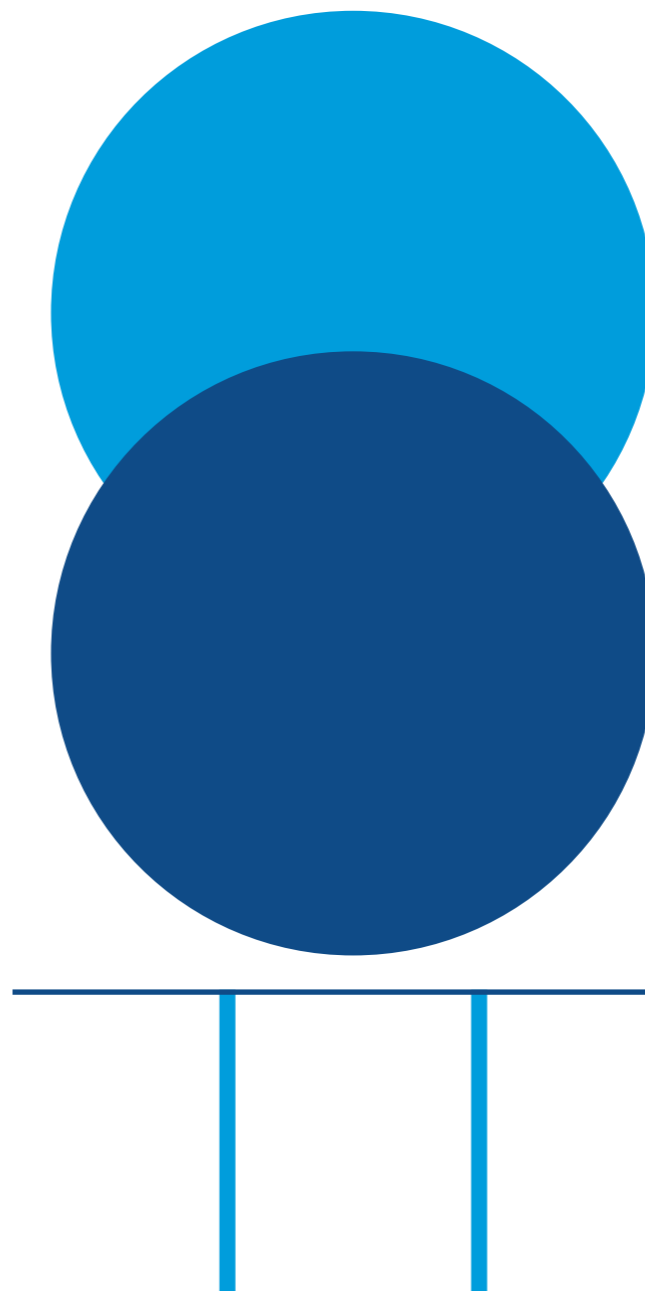
DIALOGUES is the new monthly series of live events hosted by the Stavros Niarchos Foundation (SNF). Through this new series, the SNF intends to present individuals, as well as civil society representatives, who inspire through their work, actions and vision, coming from different fields, backgrounds, and countries.

DIALOGUES will delve into different themes that cut across the key pillars of the Foundation's work: Arts and Culture, Education, Health and Sports, and Social Welfare.

Through this series of events, which are free and open to the public, the SNF seeks to catalyze conversations around critical issues, facilitate the exchange of ideas, present individuals who inspire a new way of thinking and spark collaboration among individuals and organizations, across the globe.

The events follow a flexible format featuring panel discussions, one-on-one conversations, and presentations, among others. DIALOGUES are open to the public. Participation is secured via electronic pre-registration, on a first-come-first-served basis. Furthermore, events are live streamed and are available on demand in both video and podcast format on the SNF's website.

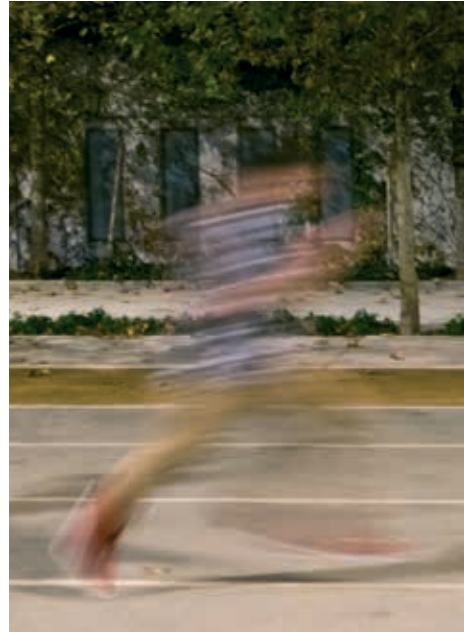
For additional information for the upcoming installment of DIALOGUES, please visit [SNF.org](http://SNF.org)





# Activities for Adults

Yoga in the Park  
p.16



Fitness for everyone  
p.16



Computer courses  
for persons 65+  
p. 17

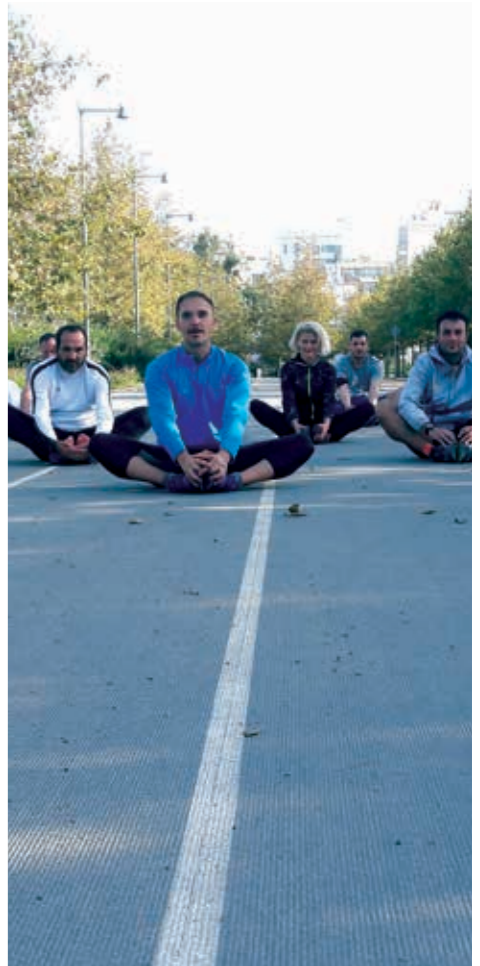


Open Air  
Hoop Dance  
p.18



Sailing  
the Canal  
p. 17

SNFCC  
Running Team  
p.16



Kayaking the Canal  
p.16

The Green Fingers  
p.19



SPORTS & WELNESS

**Monday-Friday**  
08.00-10.00  
18.00-21.00  
(except Friday 06/04 and Monday 09/03)

**RUNNING TRACK 6**

**Fitness for everyone**

On a daily basis, experienced physical education instructors are available at the outdoor gym to offer advice and training recommendations, and provide your personal fitness evaluation. You can sign up for a personalized program including aerobic exercise, muscle enhancement, flexibility exercises and rehabilitation.

**Design-Implementation:** Regeneration & Progress

**Sunday 01, 15, 22/04**  
12.00-14.00

**ESPLANADE 17**

**Petanque**

A sport for fun, wellness and socializing, a game of petanque promotes accuracy, coordination and concentration. Competitors, one-on-one or team against team, try to get as close as possible to a target, by throwing boules.

**Design-Implementation:** Regeneration & Progress

**Monday 02, 16, 23, 30/04** 18.00-19.30  
**Tuesday 03, 10, 17, 24/04** 08.00-09.30  
**Thursday 05, 12, 19, 26/04** 08.00-09.30  
**Friday 13, 20, 27/04** 18.00-19.30  
(up to 30 participants)

**GREAT LAWN 1**

**Yoga in the Park**

Yoga helps coordinate physical movement and mental processes through gentle practice involving breathing, asana postures and relaxation, in order to gain self-control and concentration, peace of mind, and develop positive thinking.

**Design-Implementation:** Regeneration & Progress

SPORTS & WELNESS

**Monday 02, 16, 23, 30/04** 07.45-09.00  
**Wednesday 04, 11, 18, 25/04** 07.45-09.00  
18.00-19.00  
19.00-20.00  
**Thursday 05, 12, 19, 26/04** 18.00-19.00  
19.00-20.00  
**Friday 13, 20, 27/04** 07.45-09.00  
(up to 30 participants)

**GREAT LAWN 1**

**Mat Pilates**

A creative way to keep in shape focusing on strengthening the body's core, which helps us to maintain correct body posture and improves flexibility and balance. Pilates exercises help improve mood and eliminate stress. Suitable for men and women of all ages and levels, Pilates takes place on a mat, using props, such as rings, resistance bands and balls.

Practitioners must wear comfortable clothing and bring their own pilates mat.

**Design-Implementation:** Regeneration & Progress

**Tuesday 03, 10, 17, 24/04** 18.00-19.15  
**Saturday 14, 21, 28/04** 08.30-09.45

**GREAT LAWN 1**

**Tai Chi**

An ancient Chinese martial art evolved into a pleasant and low-intensity form of exercise. Slow, focused movement and deep breathing help to reduce stress and anxiety, while increasing flexibility and balance. Tai Chi is suitable for all ages and all fitness levels.

**Design-Implementation:** Regeneration & Progress

**Wednesday 04, 11, 18, 25/04** 09.00-10.15  
**Thursday 05, 12, 19, 26/04** 18.00-19.15

For ages 50+  
(up to 30 participants)

**LABYRINTH 4**

**Qigong**

Age-old Chinese practice suitable for all fitness levels, in a program designed specifically for people over 50. Qigong combines mild, slow, repetitive movement with kinesthetic concentration, meditation, and breathing control.

**Design-Implementation:** Regeneration & Progress

**Saturday 14, 21, 28/04**  
08.30-10.00

For people aged 15-70  
(up to 50 participants)

**RUNNING TRACK 6**

Teenagers aged 15-18 must have written parental/guardian consent to participate

**SNFCC Running Team**

The Park's running friends join forces in a team that trains every Sunday under the guidance of experienced endurance coaches. The goal is to improve individual performance through group training and group support.

**Design-Implementation:** Regeneration & Progress

**Saturday 14, 21/04**  
**Sunday 15, 22/04**

12.00-13.00 ; ages 12-17  
13.00-14.00 ; ages 17+ and adults & 14+ mentally impaired\*

(up to 15 participants per 60' by pre-registration at [snfcc.org/events](http://snfcc.org/events))

\*Children must be accompanied by an adult, either by participating in the activity or by supervising them at the venue.

**CANAL 16**

**Sailing the Canal**

The Kalamaki Yacht Club presents a series of interactive sailing events on different types of boats, both in the Canal and on shore, featuring innovative educational activities for children and adults.

**In co-operation with:** Kalamaki Yacht Club

**Saturday 14, 21/04**  
**Sunday 15, 22/04**  
16.30- 19.00

(up to 15 participants per 30' by pre-registration at [snfcc.org/events](http://snfcc.org/events))

**CANAL 16**

For children aged 10+ and adults

\*Children under 15 years old must be accompanied by an adult

**Kayaking the Canal**

This course aims to familiarize children and adults with kayaking, under the coaching of experienced instructors. At the same time, it is a great way to get to know the SNFCC, enjoying water sports in the Canal!

Participants are advised to bring a second pair of clothes with them.

**Design-Implementation:** Regeneration & Progress



SPORTS & WELLNESS

**Sunday 15/04**  
18:30-20:00

*(up to 20 participants on a priority basis)*

MEDITERRANEAN GARDEN 10

**Open Air Hoop Dance**

Hoop dancing is one of the most popular workout methods. When practiced outdoors, there are unlimited possibilities for dancers – regardless of age and fitness level – to explore their relationship with their body, the space around them and the hoop as an extension of themselves.

In the Open-Air Hoop Dance lab, we will learn hoop tricks and flow essentials, and enjoy the Stavros Niarchos Park facilities by expressing ourselves through colorful hoops! Hoops will be available for all participants.

**Design-Implementation:** Sunny Diz

**Wednesday 18/04**  
17:30-19:00  
19:00-20:30

*(up to 20 participants on a priority basis)*

NLG MULTIFUNCTIONAL ROOM 11

**First-aid course**

Learn how to give first aid and find out about immediate and effective treatment of health problems and symptoms that can threaten human life. A non-certified training is offered for heart attack and drowning incidences, as well as the use of an Automated External Defibrillator. Lastly, participants will have a hands-on experience with the use of specifically designed models/ preforms.

**Design-Implementation:** Regeneration & Progress

NATURE

**Saturday 14/04**  
11.00-14.00

*(up to 30 participants on a priority basis)*

PINE GROVE 2

**Talking about the Park's plants:**

**Edible and medicinal shrubs and trees in the Park**

We are talking about the Pine, Fig and Carob trees, the Schinus shrub, and the Angiosperms and Citrus trees hosted in the Park. Their nutritional values, secrets of their cultivation, importance of the soil, their friends and enemies are some of the topics to be explored in this workshop.

**Design-Implementation:** Panagiotis Papadopoulos, Agronomist MSc, MedCulture, Agricultural University of Athens

**Sunday 01, 15, 22, 29/04**  
13.00-14.30

*(up to 25 participants on a priority basis)*

VEGETABLE GARDEN 20

**The Green Fingers**

Participants learn everything they need to take good care of their plants and be even more in tune with nature.

Topics: collection of propagating material, grafting techniques, propagation methods, seedling development, transplantation, plant hardening.

**Design-Implementation:** Stamatias Kavassilis, Agronomist – Soil Specialist  
Stavroula Katsoyanni, Agronomist – Landscape Architect

**Saturday 21/04**  
12.00-13.30

This workshop is for blind or vision-impaired persons

MEDITERRANEAN GARDEN 10

**Healing Gardens**

Participants will discover the Park's Mediterranean plants through touch and become familiar with their distinctive characteristics. Moreover, they will identify many aromatic species through taste and smell, associating them with personal memories.

**Design-Implementation:** Stamatias Kavassilis, Agronomist – Soil Specialist  
Stavroula Katsoyanni, Agronomist – Landscape Architect

IDEAS LAB

**Tuesday 03, 10, 17, 24/04** For ages 50+  
18.00-20.00 (up to 20 participants on a priority basis)

NLG MULTIFUNCTIONAL ROOM 11

**Workshop for those who forget a little (or a lot)**

Under the guidance of experienced instructors, we join in games that combine mental and physical exercise with mental activation. This course is aimed at men and women over 50 who want to keep active and stay healthy!

**Design-Implementation:** Regeneration & Progress  
**Scientific Supervision:** Athens Association of Alzheimer Disease and Related Disorders (Alzheimer Hellas)

ARTS & CRAFTS

**Monday 16/04** For future and new parents and their babies up to 8 months old  
18.00-21.00  
NLG BOOK CASTLE 11

**Sunday 22/04** (up to 25 participants by pre-registration at snfcc.org)  
11.00-14.00  
NLG MULTIFUNCTIONAL ROOM 11

**Knitted Sculpture: Material Poetics**

This series is inspired by artistic practices of reviving traditional handicrafts, inviting new and future parents to discover the relaxing craft of knitting as a way to tell personal stories during the first year of parenthood.

Movana Chen's paper yarn sculptures and Dave Cole's provocative knitted artworks made of industrial yarns and unconventional needles inspire us to experiment with different types of knitting using unusual materials and yarns.

**Design-Implementation:** Very Young Contemporary Art (VYCA)

**Wednesday 25/04** The seminar is addressed to people aged 65+, with or without motor disabilities, and their companions.  
18.30-20.30

PINE GROVE 2 (up to 30 participants)

**Percussion circle for ages 65+**

A musical encounter to unite and unleash the creative energy of a powerful group. In a playful mood, the group comes into contact with rhythm, singing and movement through relaxation exercises, breathing techniques and music movement games.

**Design-Implementation:** QUILOMBO LAB

**Wednesday 11, 18, 25/04** (up to 15 participants per workshop on a priority basis)  
18.00-19.30  
19.30-21.00

NLG KIDS LAB 11

**Mistake Labs: Bookmarks in Art History**

We welcome the spring by opening the bookmark on the Arts & Crafts movement, exploring the work of British painter and designer William Morris. Drawing inspiration from his book, textile, and wallpaper designs, we discover the merit of applied arts, designing natural patterns, using the printmaking technique (making impressions from our own made stamps).

If they wish, participants may bring ordinary materials to use in making stamps.

**Design-Implementation:** Christina Tsinisizeli, Artist



EASTER

**Wednesday 04/04** (up to 15 participants per workshop on a priority basis)  
18.00-19.30  
19.30-21.00

NLG KIDS LAB 11

**Trial Labs: Drawing angels**

In Easter Trial Labs, we draw inspiration from works by Greek and international artists from the Byzantine period to date, focusing on angel figures.

**Design-Implementation:** Christina Tsinisizeli, Artist



TECHNOLOGY

**Monday-Friday** (up to 16 participants on a priority basis)  
11.00-12.00  
12.30-13.30  
14.00-15.00

NLG PC LAB 11

**Computer courses for persons 65+**

Introductory courses in digital skills, intended for users with no previous experience who seek to familiarize themselves with using a computer and learn how to perform basic tasks, such as word processing or web browsing – skills that will enable them to carry out everyday tasks.

Using simple and practical learning steps, this course is geared towards novice users aged 65+ as well as everyone wishing to gain a basic mastery of the subject.

**Monday 02, 16, 23, 30/04** (up to 16 participants pre-registration at snfcc.org)  
18.30-20.30

NLG PC LAB 11 (self-contained sessions)

**Introduction to mobile photography**

Familiarize yourself with the basics of composing a photo as well as using a mobile phone to shoot professional-quality photos (self-contained sessions)

**Design-Implementation:** Foundation

\*Familiarity with a mobile phone and basic familiarity with the camera app required

**Thursday 05, 12, 19, 26/04** (up to 16 participants pre-registration at snfcc.org)  
18.30-20.30

NLG PC LAB 11 (self-contained sessions)

**Making smart graphics for the social media**

Online graphic creation and editing using original effects and contemporary styles for personal or commercial use on social media, using free software (self-contained sessions).

**Design-Implementation:** Foundation

\*Familiarity with a web browser and the internet required

# SNFCC KIDS



Open Air Hoop  
Dance Kids  
p.26



Mistake Labs  
p.28



Yoga Kids  
p.24



Ready! Steady! Go!  
p.24



Sports games  
p.24



Little Park's Gardeners  
p.27



**SPORTS & WELLNESS**

**Sunday 01, 15, 22, 29/04** For children aged 4-12  
11.00-12.00 *(up to 30 participants)*

**LABYRINTH 4**

**Yoga Kids**

A child-centered, play-based approach, focusing, not on perfect execution, but on teaching children how to control their bodies, breathing and thinking, and how to relax even as they gain strength, flexibility and self-confidence.

*Participants should bring their own yoga mat.*

**Design-Implementation:** Regeneration & Progress

**Sunday 01, 15, 22, 29/04** For children aged 5-10  
18.00-19.15 *(up to 20 participants)*

**GREAT LAWN 1**

**Sports games**

A recreational activity for children and teenagers in the Park, aimed at fostering sporting spirit. Action, interactive and musical movement games take the form of team sports, providing opportunities to collaborate, communicate and stimulate physical well-being.

**Design-Implementation:** Regeneration & Progress

**Saturday 14, 21, 28/04** For people aged 15-70  
08.30-10.00 *(up to 50 participants)*

**VISITORS CENTER VC**

Teenagers aged 15-18 must have written parental/guardian consent to participate

**SNFCC Running Team**

The Park's running friends join forces in a team that trains every Sunday under the guidance of experienced endurance coaches. The goal is to improve individual performance through group training and group support.

**Design-Implementation:** Regeneration & Progress

**Saturday 14, 21, 28/04** For children aged 3-6  
**Sunday 01, 15, 22, 29/04** *(up to 20 participants)*  
12.00-13.15

**RUNNING TRACK 6**

**Artistic gymnastics**

Doing somersaults, running, and turning all help the body to develop properly, and improve flexibility and motor coordination. Through artistic gymnastics, coupled with play and fun, the Park's youngest friends get to know their bodies and their potential!

**Design-Implementation:** Regeneration & Progress

**Saturday 14, 21, 28/04** For children aged 6-12  
13.00-14.15 *(up to 20 participants)*

**VISITORS CENTER VC**

**Learning to play as a team**

Children learn the value of co-operation by creating teams that aim to complete a unique mission. To achieve this, they need to show trust and harness each team member's capabilities. Through non-competitive games, communication, and team exploration, kids will realize that joy lies not only in the victory itself.

**Design-Implementation:** Regeneration & Progress



**SPORTS & WELLNESS**

**Saturday 14, 21, 28/04** For children aged 4-9  
18.00-19.30 and parents *(up to 50 participants)*

**GREAT LAWN 1**

**Family games**

An entertaining activity that's all the rage, with games specially designed for both young and old. Parents are encouraged to play and collaborate with their children in the Park, sharing their educational stimuli and developing their imagination.

**Design-Implementation:** Regeneration & Progress

**Saturday 14, 21, 28/04** For children aged 5-10  
18.00-19.15 *(up to 20 participants)*

**RUNNING TRACK 6**

**Sporting duels**

Action games for fun and fitness in the Park. Put on your running shoes and join the fun!

**Design-Implementation:** Regeneration & Progress

**Saturday 14, 21/04** 12.00-13.00 ;  
**Sunday 15, 22/04** ages 12-17  
13.00-14.00 ;  
ages 17+ and adults & 14+ mentally impaired\*  
*(up to 15 participants per 60' by pre-registration at snfcc.org/events)*

**CANAL 16**

**Sailing the Canal**

The Kalamaki Yacht Club presents a series of interactive sailing events on different types of boats, both in the Canal and on shore, featuring innovative educational activities for children and adults.

**In co-operation with:** Kalamaki Yacht Club

**Sunday 15, 29/04** 10.30-11.30  
**Sunday 29/04** 10.30-11.30

**GREAT LAWN 1**

For children with or without mental disability  
*(up to 15 participants)*

**VISITORS CENTER VC**

For children with or without physical disability  
*(up to 15 participants)*

**Playing Sports Together**

Given that physical activity is paramount for all children, this program aims to actively engage children in adapted sports to improve their fitness and increase their motor activity. Boccia, Sitting Volleyball, Athletics, Wheelchair Basketball, Dance, are only some of the sports through which children will have fun and get a boost of self-confidence and self-esteem through teamwork!

**Design-Implementation:** Regeneration & Progress

**Saturday 14, 21/04** *(up to 15 participants per 30' by pre-registration at snfcc.org/events)*  
**Sunday 15, 22/04** 16.30- 19.00

**CANAL 16**

For children aged 10+ and adults

\*Children under 15 years old must be accompanied by an adult

**Kayaking the Canal**

This course aims to familiarize children and adults with kayaking, under the coaching of experienced instructors. At the same time, it is a great way to get to know the SNFCC, enjoying water sports in the Canal!

Participants are advised to bring a second pair of clothes with them.

**Design-Implementation:** Regeneration & Progress

**Sunday 15/04** For children aged 10+ and families  
10.00-14.00

**VISITORS CENTER VC**

Children must be accompanied by an adult.

**Bike safety**

Tips for kids and adults to move safely when riding a bicycle. Before every ride, specialized bicycle mechanics inspect bicycles for any minor repairs required. Participants can bring their own bicycles or rent SNFCC rental bikes (more information at the Visitors Center).

**Design-Implementation:** Mbike

**SPORTS & WELLNESS**

**Saturday 21/04** 18.30-20.00 For children aged 6-12 (up to 20 participants)

**MEDITERRANEAN GARDEN** 10

**Hoop Dance Party**

Hula hoop is a perennial kids' favorite. Good for them, too, as it enhances physical coordination, balance and alertness of mind. In this workshop, children will have the opportunity to learn new tricks playing their beloved game, while exercising their minds and bodies, and having a blast in the process!

Hula hoops will be available for all participants.

**Design-Implementation:** Sunny Diz

**Sunday 29/04** 11.00-13.00 For children aged 6-12 (up to 400 participants)

**GREAT LAWN** 1

**Park Games**

A range of motor and cognitive activities, including traditional games, athletics and orientation exercises are a great opportunity for children to discover Stavros Niarchos Park while having fun. Participants are advised to wear comfortable clothing and sports shoes. Participants are advised to wear comfortable clothing and sports shoes.

**Design-Implementation:** Regeneration & Progress

**EASTER**

**Sunday 01/04** 17.30-18.30 18.30-19.30 19.30-20.30 For children of all ages with their parents (up to 15 participants per session)

**NLG KIDS LAB** 11

\*Registration for all three workshops starts at 17.00 at the event location.

**Mistake Labs:**

**Painting Angels**

In Easter Trial Labs, we will paint angels, drawing inspiration from masterful depictions of Resurrection angels by celebrated Greek and international artists.

**Design-Implementation:** Christina Tsinisizeli, Artist

**Saturday 07/04** 11.00-12.15 12.30-13.45 (maximum 20 families per session by pre-registration at snfcc.org)

**GREAT LAWN** 1

**Easter Treasure Hunt**

The Treasure is well hidden at SNFCC this Easter. Children and parents form the strongest teams and go looking for it! Are you in? Can we find it?

**Design-Implementation:** Regeneration & Progress

**SCIENCE**

**Friday 13/04** 18.00-19.00 For children 4-6 (up to 20 participants by pre-registration at snfcc.org/events)

**NLG KIDS LAB** 11

**STEMath**

STEMath Training Program is a groundbreaking system for the interactive and experiential understanding of mathematics. Pupils become researchers, formulating their own questions and seeking solutions, with discreet guidance by specially trained instructors, discovering key mathematical concepts appropriate to their age.

**Design-Implementation:** STEM

**Friday 20/04** 18.30-19.30 For children aged 8-10 (up to 20 participants)

**NLG KIDS LAB** 11

**STEM in action**

Equipped with appropriate skills, young engineers are ready to transition from mechanical to electric power, as well as examine energy conversion. They learn how to use electric motors and sensors so they can program their constructions and build their first automation.

**Design-Implementation:** STEM

**Friday 27/04** 17:00-17:30 17:40-18:10 18:30-19:00 19:10-19:40 (up to 15 children and parents per session by pre-registration at snfcc.org/events)

**NLG KIDS LAB** 11

**Mechanical Garden**

Kids and adults collaborate to build a colorful garden of manual or motorized constructions made of straw, in an experiential workshop that enhances fine mobility skills and problem solving, and kindles the imagination! The constructions are made using Strawbees in combination with worksheets.

**Design-Implementation:** GAMELY

**NATURE**

**Sunday 01, 15, 22, 29/04** 10.30-12.00 For children aged 5-9 (up to 25 participants)

**VEGETABLE GARDEN** 20

**Park's Little Gardeners**

The Park's Little Gardeners are once again ready to take action this month in an exciting journey of exploration, fun and discovery in the Park. They identify seasonal flowers, watch the newly hatched insects, learn about the life of bees and how important they are; they pick and taste ripe greens from the vegetable garden, care for the soil and the vegetable garden.

**Design-Implementation:** Stamatias Kavassilis, Agronomist - Soil Specialist Stavroula Katsoyanni, Agronomist - Landscape Architect

**Saturday 14, 21/04** 12.00-14.00 For children aged 10-14 (up to 20 participants)

**NLG KIDS LAB** 11

**Plan the Green City**

Traveling to cities -imaginary and real, old, modern and futuristic- we discover how a city is organized, and what makes it sustainable. Drawing inspiration from the world around us, children turn their ideas into reality and plan their own city.

**Design-Implementation:** architecture4kids



ARTS & CRAFTS

**Sunday 01/04**  
17.00-18.00  
18.30-19.30

For children aged 4+ and parents  
*(up to 50 participants per meeting)*

NLG BOOK CASTLE 11

**Storytelling for Kids: Truth or Lies?**

A storytelling performance, featuring music and songs by Paramythokores, in which children have fun learning how to tell a lie from the truth!

**Design-Implementation:** Antonia Velliou, Storyteller, Museum Educator  
Ifigeneia Kakridoni, Storyteller, Museum Educator

**Sunday 01/04**  
12.00-14.00

For families with children aged 6-12, with or without disabilities  
*(up to 20 participants)*

NLG KIDS LAB 11

**Soundscapes at SNFCC**

Following along the lines of Renzo Piano's architectural designs for SNFCC, we embark on a journey of experimentation and discovery, identifying human-made and natural sounds, and linking them to ideas, feelings, experiences and images. If SNFCC's architectural design was a music score, what would it sound like?

**Design-Implementation:** Kalliopi Koutroumbi, Museologist -Museum Educator  
**Assistant:** Katerina Fotopoulou, Entertainer

**Thursday 05, 12, 19, 26/04**  
17.30-18.15  
18.45-19.30

For children aged 1-3 and their parents  
*(up to 10 children and 10 parents per session by pre-registration at snfcc.org/events)*

NLG KIDS LAB 11

**Ready! Steady! Go! Colors and Scents**

Through the colors and scents of spring, young children's sensory perception is stimulated through play and creativity. On Maundy Thursday, colors and scents will make up the most original candle.

**Design-Implementation:** Irene Persidou, Art Historian, Educational Entertainer  
**Βοηθός:** Christina Meimaridi, Museum Educator

**Saturday 14, 21 28/04**  
17.30-18.30  
18.30-19.30  
19.30-20.30

For children of all ages and their parents  
*(up to 15 participants per workshop)*

\*Registration for any of the three workshops is available at the event location starting at 17.00.

NLG KIDS LAB 11

**Mistake Labs: Bookmark on Fauvism**

We welcome spring by opening the bookmark on Fauvism, exploring the works of French artist Henri Matisse. Drawing inspiration from both still-life and interior paintings, we arrive at our own interior painting, creating our own window looking out to the spring!

**Design-Implementation:** Christina Tsinisizeli, Artist

**Sunday 15/04**  
17.30-20.00

For ages 13-18  
*(up to 25 participants)*

NLG KIDS LAB 11

**Talking Covers: A Series of Visual Poetry Workshops**

Teenagers create cover art for their own music album, personal portfolio, or poetry collection, using a series of artistic practices linking word and image (calligram, surrealist typography, plastic poetry, selfie poetry, ready-made poetry). Inspired by the photographic self-portraits by poet Raul Hausmann and Hannah Hoch, participants photograph themselves using their mobile phones and process their selfie images by adding narrative in the form of text, lettering, painting, collage.

**Design-Implementation:** Very Young Contemporary Art (VYCA) and the visual artist and professor Alexandros Psychoulis, University of Thessaly



**Sunday 22/04**  
12.00-14.00

For families -min. 2 persons  
For people with or without disabilities

PINE GROVE 2

*(up to 50 participants)*

For people with or without disabilities

**Home-made Percussion Circle**

**Bring your own improvised percussion from home**

Parents, grandparents and children bring their imagination to join in a creative music partnership that refreshes their communication. Families bring along cherished or ordinary objects to compose a common rhythmic story and get to know each other anew in an environment of familiar or excitingly new sounds.

**Design-Implementation:** QUILOMBO LAB

**Saturday 28/04**  
11.30-12.30, 12.30-13.30  
13.30-14.30

For children aged 7+, young people and families, with or without disabilities

NLG KIDS LAB 11

*(up to 25 participants per hour)*

Priority registration starts at 11.00 for the first two workshops and at 13.00 for the third workshop.

**We Create Art All Together: Toy Stories**

We build a 3D model - an imaginary microcosm out of our old, worn-out toys, or toys we have grown tired of. After breaking them apart, we will re-arrange them into a 3D sculpture assemblage in which individual elements compose a new narrative, taking us on a creative journey to imaginary worlds.

**Design-Implementation:** Theodore Zafeiropoulos, Artist  
Elisavet Chelidoni, Artist - Special Education Teacher

**Saturday 28/04**  
17.30-18.00, 18.00-18.30  
18.30-19.00, 19.00-19.30  
19.30-20.00

*(up to 32 participants per game)*

SOUND GARDEN 9

**Checkmate in the Park**

Playing in two groups, children are introduced to the most popular strategy game in the world - chess. Taking on the role of one piece each, they become a living part of the game and have fun learning how each piece moves and how pieces are captured or defended.

**Design-Implementation:** Challedu

**Sunday 29/04**  
17.30-18.30  
18.30-19.30

For ages 6-10  
*(up to 20 participants per game)*

PINE GROVE 2

**Music and Games in the Park**

Rhythm and music games introduce children to the sounds and history of the pentatonic scale (from Pythagoras to Epirus polyphonic singing and from gospel to music in remote regions of the world). Learning about rhythm and melody, they practice based on familiar tunes. Children can bring their own everyday objects to create small percussion instruments.

**Design-Implementation:** Challedu

**Sunday 29/04**  
17.00-19.00

For ages 12-18  
*(up to 25 participants)*

NLG KIDS LAB 11

**I slam therefore I am Talking Poetry Lab**

The performing poet twists lyrics and plays games with words. Into the microphone, his voice becomes expressive and powerful. The aim of this workshop is for participants to come into contact with the origins of oral poetry, discover lyric-writing techniques, compose rap poetry and perform lyrics using different approaches.

\*Participants produce a stage prop;  
\*They can bring their own songs.

**Design-Implementation:** Very Young Contemporary Art (VYCA) in collaboration with Mc Yinka, music artist -performer

**Sunday 22, 29/04**  
11.00-12.00 ;  
for 6-12 months old babies  
12.30-13.30 ;  
for 12-24 months old babies

*(up to 10 children and 10 parents per session by pre-registration at snfcc.org/events)*

NLG KIDS LAB 11

**I've Got a Great Idea!**

Natural materials, colors, fabrics and multifunctional objects become invaluable companions in early childhood travels. Exciting music, sounds and light that stimulate abstract thinking, games that improve coarse and fine motor skills, and exploratory play are some of the ways we will experiment in a workshop aimed at infant interaction and socialization.

**Design-Implementation:** abariza



## Wolfgang Amadeus Mozart The Magic Flute

Opera

01, 11, 13, 14, 15, 18, 20,  
22, 25, 27, 29/04

Starts at:  
19.30  
(Sundays at 18.30)

GNO STAVROS  
NIARCHOS HALL 13

A **Komische Oper Berlin** production  
Mozart's much loved opera returns to the GNO in an impressive, innovative production which launched in Berlin and has already become famous worldwide. Wherever *The Magic Flute* directed by Barrie Kosky, the Australian artistic director of the Komische Oper Berlin, has been staged, crowds have been awed by the production's sheer imagination and by the precision with which the artists perform the 'dance-like' directions, which merge animation with 'live' spectacle and a sense of cabaret, music hall and Weimar Republic era shows as well as dabs of British humor and opera.

**Conductors:** Zoi Tsokanou - Giorgos Balatsinos  
**Directors:** Suzanne Andrade - Barrie Kosky

With the **Orchestra, Chorus and Soloists**  
of the **Greek National Opera**



## Sacred Music Days

Trance

Festival

01, 03/04

Starts at:  
20.30

GNO ALTERNATIVE  
STAGE 13

### THE ART OF FUGUE 01/04

J. S. Bach's monumental work is presented in its entirety in an ecstatic experience.

**Piano:** Alexandra Papastefanou

### THE FALLEN DERVISH 03/04

Based on A. Papadiamantis' short story

**Concept-musical composition:** Fenia Papadodima  
**Improvisations:** Panagiotis Kostopoulos, David Lynch,  
Giorgos Palamiotis, Fenia Papadodima,  
Andreas Polizogopoulos

## Minas Borboudakis

Z

Opera

14, 15, 17, 18/04

Starts at:  
20.30

GNO ALTERNATIVE  
STAGE 13

Premiere/ Commissioned by the  
GNO Alternative Stage

Based on the same name novel by  
**Vassilis Vassilikos**

One of the most important moments in Greece's modern political history, which marked the decline into a long period of political turmoil that eventually culminated in the 7-year military regime period, was the murder of EDA (Left wing party) parliamentary deputy, Grigoris Lambrakis; that story now enters the opera repertory with the dual aim of rekindling the public's relationship with opera, and opera's relationship with issues still unresolved in society's collective conscience.

**Conductors:** Minas Borboudakis - Nikos Vasileiou  
**Director:** Katerina Evangelatos  
**Libretto:** Vangelis Hatziziannidis



## Henry Purcell The Fairy Queen Baroque Opera

27, 28, 29/04 &  
04, 05, 06, 11, 12/5

Starts at:  
20:30

GNO ALTERNATIVE  
STAGE 13

The *Fairy Queen* has been characterized as a semi-opera or masque, because in effect it is stage music written by England's most important baroque composer, Henry Purcell (1659-1695) for an adaptation of Shakespeare's *Midsummer Night's Dream* written by Thomas Betterton, the most important Restoration playwright. Purcell's work has little in common with Shakespeare's since no verses from the playwright are there. However, it is an example of the music theater genius of the composer of *Dido and Aeneas*, and his rich imagination which brings life to allegorical forms and gives shape to the libretto's loose plot. The responsibility for the direction and the visual approach of Purcell's dramatic tale has Yannis Skourletis (with the bijoux de kant group) one of the most idiosyncratic directors, whose aesthetics speaks directly with baroque.

**Conductor:** Markellos Chryssicos  
**Director:** Yannis Skourletis / bijoux de kant

\*The performance contains scenes of nudity.



## The Return of Karagiozis to his Homeland Operatic shadow theater

15, 22/ 04

Starts at:  
11:00

GNO ALTERNATIVE  
STAGE 13

The successful performance *The Return of Karagiozis to his Homeland* continues its tour in the 2017-2018 artistic season after a series of performances in squares, schools and healthcare facilities in Attica and the regions last year. This innovative shadow theater performance brings two unexpected characters together on stage: Greece's very own Karagiozis and Harlequin from the Commedia del'Arte. The performance is based on Claudio Monteverdi's opera *Il ritorno d'Ulisse in patria (The Return of Ulysses to his Homeland)* and seeks to showcase the commonalities between Greek shadow theatre and Italian puppet theatre. The marionettes and figures are supported by a group of performers who are leading lights in the world of baroque music, and who also have a deep knowledge of traditional Greek music.

**Concept – Dramaturgy – Performance:**  
**Puppetmaster:** Alexandros Melissinos  
**Song:** Elena Krasaki (soprano)  
**Music:** Theodoros Kitsos (theorbo – bouzouki)  
Iasonas Ioannou (baroque cello – folk guitar)  
Dimitris Tingas (violone – baglamas)

## GNO LEARNING & PARTICIPATION

21, 22, 28, 29/04 & 05/05  
10.00-13.00  
**Information/ Registration:**  
213 0885742 (Monday –  
Friday 09.00-15.00)

**BALLET STUDIO B 13**

Maximum number of  
participants: 20

*Educational activity for kids  
and adolescents 7 to 17  
years old.*

## Getting to know opera and ballet: The Fairy Queen

Taking the idea of recycling musical materials as a starting point, the work-shop seeks to create a new version of Henry Purcell's *The Fairy Queen*. The aim is to create an original tale, whose music will come from crowd-composition and the creativity of participants.

**Music group**

**Designed / implemented by:** Ann-Christine Sofroniou (musician/music teacher/researcher), Antis Skordis (musician/composer)

**Visual Arts Group**

**Designed/implemented by:** The Soil Orchestra

**Every Monday**  
18.00-20.00

**Information/registration:**  
education@nationalopera.gr  
Thaleia-Mari Papadopoulou  
6970885692

A music project for refugees, immigrants, Greek and non-Greek temporary and permanent citizens of Athens. Participation is free of charge.

No prior musical knowledge is required.

## Intercultural Choir

Refugees, immigrants, Greek and non-Greek temporary and permanent citizens of Athens come together on a weekly basis to sing traditional songs from their homeland.

The project is supported by the UNHRC.

**Choirmaster:** Vasoula Delli

All GNO Learning and Participation programmes are free of charge.

01/04  
11.00-13.00

Max. No. of participants:  
20 participants  
(on a priority basis)

**Information/registration:**  
213 0885742 (Monday –  
Friday 09.00-15.00)

## The Opera-Trees Park: Winged Prima donnas

GNO's new environmental programmes are inspired by the sounds indoors and outdoors - the sounds of natures and sounds inspired by nature. Three cycles of environmental educational activities that focus on listening, observation, free play, fairy tales and the visual arts will help participants rediscover the links between opera and the natural environment.

**Designed-Implemented by:**

Dora Basdeki (environmental scientist/facilitator of hands-on environmental training courses), Eleni Michailou (music instructor).

## SUNDAY MORNINGS

01/04  
Starts at: 12:00

**Information/registration:**  
213 0885700

**VIP Lounge of the Greek  
National Opera 13**

## Tea for ladies and gents

The Alternative Stage of the Greek National Opera is inviting a small number of audience members to a private performance with songs, dance and tea.



## Guided Tours



Want to know more about SNFCC? We offer daily guided tours of its award-winning building complex, home to the new premises of the Greek National Opera (GNO) and the National Library of Greece (NLG), designed by the Renzo Piano Building Workshop. Discover public areas and go backstage in the two buildings. We will visit the rehearsal spaces, the Stavros Niarchos Hall and the Greek National Opera's Alternative Stage, and stroll through the Library's Public Section, Reading Rooms and Vaults.

Guided tours of the Stavros Niarchos Park are also conducted daily. An example of state-of-the-art landscape architecture, the city's new Park is designed according to sustainability principles, with respect for the ecosystem and the challenges of an ever-changing environment. A welcoming, open space, whose vegetation and overall design capture the essence of the Mediterranean landscape, it is open for visits daily.

• To find out more information, see the guided tours schedule and pre-register, please visit [SNFCC.org/events](https://snfcc.org/events).

• The guided tours follow a continuous walking route on the SNFCC premises, including the use of stairs and elevators.

• Please note that the Stavros Niarchos Park guided tours are subject to weather conditions

## Guided Tours for groups, associations, organizations and NGOs

Guided tours for groups are available for educational associations, cultural organizations, NGOs and other entities.

To book a guided tour for your group, please call **+30 216 8091004**, or email [tours@snfcc.org](mailto:tours@snfcc.org). Guided tours are available for groups between 12-25 persons.

## School Visits

SNFCC welcomes primary and secondary school groups to its educational events.

Visits are held Monday through Friday 09.00-10.30 and 11.00-12.30.

Reserve your group online at [SNFCC.org](https://snfcc.org). For more information, please call **+30 216 8091005** or email [schools@snfcc.org](mailto:schools@snfcc.org).

## Useful Info

### > Opening hours

**Summer opening hours**  
(1 April to 31 October):

- Stavros Niarchos Park. Running Track, Agora, Lighthouse: 06.00-00.00
- Visitors Center: 09.00-22.00

### > Admission

Admission to all events is free of charge thanks to an exclusive grant from the Stavros Niarchos Foundation. For participation in workshops, 30' waiting time is necessary, while for the most of the events, due to limited seating, a preregistration at [snfcc.org/events](https://snfcc.org/events) is required.

### > Accessibility

- The Stavros Niarchos Foundation Cultural Center is fully accessible to all.
- All entrances, lifts and the Running Track area are accessible to mobility-impaired persons.
- SNFCC provides parking spaces for mobility-impaired persons on the ground floor of the car park building, as well as wheelchairs for moving inside buildings.
- Wheelchair-accessible restrooms are located at the Visitors Center, the Park Kiosk and the Agora.
- Guide strips are available on all pathways leading to SNFCC premises and Stavros Niarchos Park.
- Guide dogs and hearing dogs are welcome in all SNFCC areas.

### > Pets

Pets are welcome at all SNFCC's outdoor areas except the Great Lawn, the Labyrinth, and the playgrounds. They should always be accompanied by their guardian, who must keep them under direct and constant supervision and clean up after them.

### > Wi-Fi

Free Wi-Fi is offered at SNFCC. Computers for public use are available on the premises of the National Library of Greece.

### > Free digital access to newspapers

Visitors can enjoy free access to over 5,000 newspapers and magazines in 60 different languages in digital form on [pressreader.com](https://pressreader.com).

### > Photography

Photography on SNFCC premises is permitted exclusively for private use. For any commercial/promotional photo request, please email us at [info@snfcc.org](mailto:info@snfcc.org). Use of drones is prohibited for any purpose.

### > ATMs

Piraeus Bank and National Bank of Greece ATMs operate in SNFCC reception area.

### > First-Aid

First-Aid and medical facilities staffed by health professionals are available for use by visitors on the premises.

### > Food & Drink

Four food & drink service points are in operation in SNFCC:

**Agora Bistro** (Agora)  
Monday-Sunday 08.00-00.00

**Canal Café** (Visitors Center)  
Monday-Sunday 09.00-01.00

**Pharos Café** (Lighthouse)  
Monday-Sunday 09.00-00.00  
*\*Operating hours subject to change when the Lighthouse is hosting events*

**Park Kiosk** (Park)  
Monday-Sunday 08.00-20.00

Mobile food carts are also available in outdoor areas alongside the Canal:

**Coffee Van on tour:** 09.00-21.00  
**Juice Van on tour:** 09.00-21.00

*Members enjoy a 10% discount.*

### > Smoking

Based on the requirements of the LEED certification program earned by SNFCC, smoking is prohibited in all SNFCC indoor areas and within 8 meters of any building opening. In all other SNFCC outdoor areas, smoking is not prohibited; visitors are asked to use the floor ashtrays available in the area. We encourage visitors to refrain from smoking while enjoying the Park.

### > Environmental Management

SNFCC earned the Platinum LEED certification as a green building – the highest distinction for environmental and sustainable buildings. LEED certification is regarded as the highest possible distinction for environmentally friendly, sustainable buildings. It certifies that a building has been designed and constructed following rigorous principles of sustainable construction and environmentally innovative practices that focus on water and energy efficiency, reduction of CO<sub>2</sub> emissions, indoor environment quality, the rational management of resources. SNFCC is the first cultural project of this scale to earn the LEED Platinum Certification in Europe.

### > Maintenance works

We would like to inform our visitors that in April maintenance works that might affect your visit will take place at the Outdoor Gym and the Stavros Niarchos Park.

## Exhibitions

**Monday-Sunday**  
06.00-00.00

**SNFCC LOBBY** 18

## Spyros Louis Cup

Conceived and designed by Michel Breal for the champion of the first Marathon race – the Greek runner Spyros Louis – the Silver Cup was awarded at the first modern Olympic Games in Athens in 1896; today, it is on permanent display at the SNFCC.

**Monday-Sunday**  
09.30-21.00

**NLG BUILDING**  
(4TH FLOOR) 11

## Stefanos Lazaridis: Cynical romantic

The first global solo exhibition of the artistic work of renowned Greek set designer, director and former Artistic Director of the Greek National Opera.

The exhibition unfolds a visual timeline starting from the beginning of his career and continues with works of mixed techniques, collages and models, as well as videos from performances and interviews.

Curator: **Adonis Volanakis**

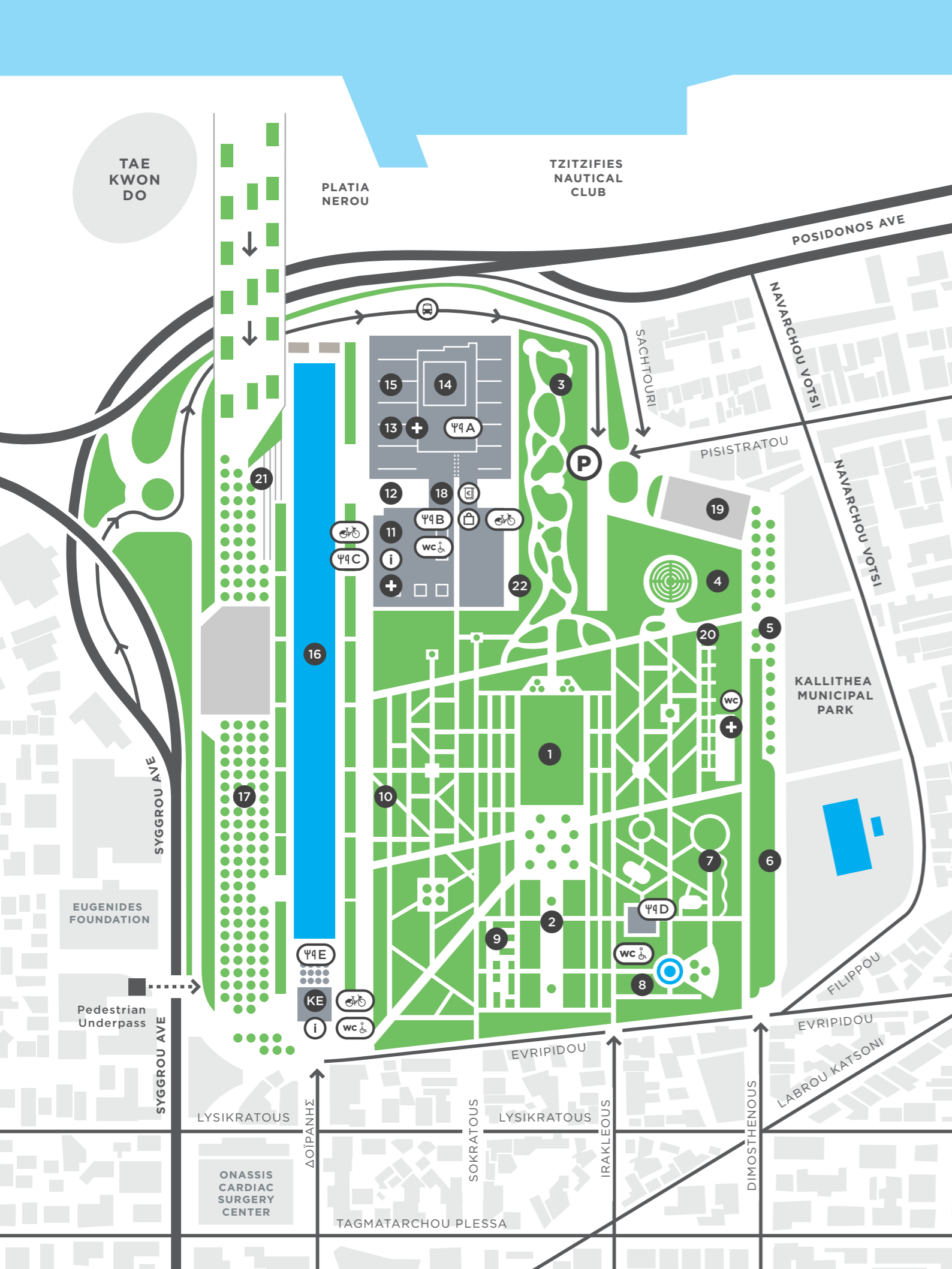
### Production:

Greek National Opera, in collaboration with the National Bank of Greece Cultural Foundation (MIET), Stavros Niarchos Foundation Cultural Center and the National Library of Greece.

### Reservations:

+ 30 213 0885700





# Map

Use the corresponding numbers on the map to locate a venue.

- 1 Great Lawn
  - 2 Pine Grove
  - 3 Southern Walks
  - 4 Labyrinth
  - 5 Outdoor Gym
  - 6 Running Track
  - 7 Playground
  - 8 Water Jets
  - 9 Sound Garden
  - 10 Mediterranean Garden
  - 11 National Library of Greece
  - 12 Agora
  - 13 Greek National Opera
  - 14 Lighthouse
  - 15 Panoramic Steps
  - 16 Canal
  - 17 Esplanade
  - 18 SNFCC Lobby Bus Parking Lot
  - 20 Vegetable Garden
  - 21 Canal Steps
  - 22 Buffer Zone
  - VC Visitors Center
  - SNFCC Bike Rental
  - SNFCC Store
  - Shuttle Bus Stop
  - First Aid
  - ATM
  - Info Point
- Ψ4A Pharos Café
  - Ψ4B Agora Bistro
  - Ψ4D Park Kiosk
  - Ψ4E Canal Café
  - Ψ4C Coffee & Juice Van on tour

## Getting to SNFCC using public transportation

- Buses**
- **130: Piraeus – Nea Smyrni** (Tzitzifis Stop from Piraeus; Delta Stop to Piraeus)
  - **217: Piraeus – Dafni Station** (Tzitzifis Stop from Piraeus; Delta Stop to Piraeus)
  - **550: Kifissia – Faliro** (Evgenideio Stop, Syggrou Avenue northbound, Onassio Stop southbound)
  - **860: Palaio Faliro – Schisto** (Tzitzifis Stop from Piraeus; Delta Stop to Piraeus)
  - **A1: Piraeus – Voula** (Tzitzifis Stop from Piraeus; Delta Stop to Piraeus)
- **B1: Piraeus - Ano Glyfada** (Tzitzifis Stop from Piraeus; Delta Stop to Piraeus)
- **B2: Academia – Agios Kosmas** (Evgenideio Stop, Syggrou Avenue northbound, Onassio Stop southbound)
- Trolleybus**
- **10: Chalandri - Tzitzifis** (Epaminonda Stop)
- Tram**
- **Tzitzifis Stop**
- Metro**
- **Faliro Station**

## Parking

SNFCC has a 1000-car parking garage.

**Pricelist:**

**Cars**  
 00.00-19.00: € 1.50 / hour  
 19.00-00.00: € 1.50 / hour with a maximum charge of € 5

**Monthly offer:**  
 Monday-Friday 07.00-19.00:  
 € 100 / month

**Motorcycles**  
 €0.70/hour

**SNFCC members enjoy a 10% discount**

More info at [SNFCC.org](http://SNFCC.org)

SNFCC is not responsible for any modifications on the public transportation's routes.

## Free SNFCC Shuttle Bus

For convenient access to and from SNFCC, daily transportation by shuttle bus is available to visitors free of charge. A shuttle bus bearing the SNFCC logo departs from Syntagma Square (intersection with Ermou Street), with a stopover at the Syggrou-Fix Metro station (Syggrou Avenue), and arrives at the SNFCC.

For time and route information please visit our website.

| From SYNTAGMA to SNFCC |               |               | From SNFCC to SYNTAGMA |               |               |
|------------------------|---------------|---------------|------------------------|---------------|---------------|
| MONDAY-THURSDAY        | FRIDAY        | WEEKEND       | MONDAY-THURSDAY        | FRIDAY        | WEEKEND       |
| 07.30                  | 07.30         | 09.30-21.30   | 12.00                  | 12.30         | 11.00-00.00   |
| 08.30                  | 08.30         | every 30 min. | 13.00                  | 14.00 – 00.00 | every 30 min. |
| 09.30                  | 09.30         |               | 14.00                  | every 30 min. |               |
| 11.00                  | 11.00         |               | 15.00                  |               |               |
| 15.15                  | 14.30 – 21.30 |               | 15.45                  |               |               |
| 16.15                  | every 30 min. |               | 16.45                  |               |               |
| 17.15                  |               |               | 17.30-22.30            |               |               |
| 18.00-20.00            |               |               | every hour             |               |               |
| every hour             |               |               |                        |               |               |

Every Sunday, between 10.30-13.00, the shuttle bus rides only between SNFCC and the Syggrou-Fix Metro Station since Syntagma is not accessible because of the Change of Guard ceremony.

The shuttle bus operates daily as scheduled unless special traffic regulations apply. On Easter Monday additional service will be available. Please visit [SNFCC.org](http://SNFCC.org) for additional information.



## April Events for Members

In April, our Members have the opportunity to enjoy these exclusive events:

### Easter Mosaic Workshops for Adults

**Holy Monday 02/04**  
17.00 & 19.30 | NLG KIDS LAB  
Event for Members only | Pre-registration starts on 26/03

### Armonia Atenea: *Stabat Mater*

**Holy Monday 02/04/2018**  
18.30 | GNO STAVROS NIARCHOS HALL  
Reserved seats for Members + Guest | Pre-registration starts on 26/03

### Easter Mosaic Workshops for Children

**Holy Tuesday 03/04**  
17.00 & 19.30 | NLG KIDS LAB  
For children aged 13-17 | Event for Members only | Pre-registration starts on 26/03

### Sacred Jazz: Lecture on Duke Ellington's World By journalist Zak Samouil

**Holy Tuesday 03/04**  
19.00 | NLG BOOK CASTLE  
Event for Members + Guest only | Free admission on production of Member Card, on a priority basis  
The lecture is followed by the Voyage Jazz Group's *Sacred Jazz* open to all concert at the Lighthouse (page 04)

### Maria Farantouri: *Epitaphios*

**Holy Wednesday 04/04**  
11.00 | GNO STAVROS NIARCHOS HALL  
Reserved seats for Members + Guest | Pre-registration starts on 26/03

### Talking covers: A Series of Visual Poetry Workshops

**Sunday 15/04**  
14.30 | NLG KIDS LAB  
Reserved seats for Members + Guest | Pre-registration starts on 10/04

### GNO Dance School

**Monday 16/04/2018**  
14.30-17.00 | GNO STAVROS NIARCHOS HALL  
For adults | Event for Members only | Pre-registration starts on 10/04

### Talking about the Park's Plants: Edible and medicinal shrubs and trees in the Park

**Saturday 28/04**  
11.00 | PINE GROVE  
For adults | Event for Members only | Pre-registration starts on 10/04

#### Practical Information:

Limited seating - pre-registration is required.  
Reservation links are sent to Members via the SNFCC Members Newsletter.

Are you  
a Member?



Share with us your photos from your visit at the SNFCC, using the hashtag **#SNFCCMembers**

Exclusive Donor:



In collaboration with:

Εθνική Βιβλιοθήκη της Ελλάδος National Library of Greece



# Discovering how a production is born, straight from its creators

That's the Membership Program experience



Join the experience!

Register at the Members Help Desk at SNFCC or online at [SNFCC.org/members](http://SNFCC.org/members). To find out more about member benefits, please call +30 216 809 1010 or email [members@snfcc.org](mailto:members@snfcc.org)

MEMBER



YOUNG



FAMILY



SENIOR



# APRIL AT SNFCC

---

*There is nothing new under the sun.* **Olia Lazaridou** in a stage reading of *Ecclesiastes*. On Palm Sunday in Parabases, SNFCC's **Readers Theater**. *Stabat mater dolorosa, juxta Crucem lacrimosa, dum pendebat Filius*. Pergolesi by **Armonia Atenea** on Holy Monday. **Duke Ellington's Sacred Concerts** at the Lighthouse on Holy Tuesday. *My son, flesh of my flesh, dear heart of my heart.* **Maria Farantouri** performs *Epitaphios* on Holy Wednesday. One week later, on Wednesday 11/04, the **Chamber Music Society** of Lincoln Center performs for the first time in Greece. **Flying Jazz Quartet** on high-flying jazz at the Lighthouse on 15/04. Contemporary Greek music scene blossoms with **Plastic Flowers** on 22/04. On 29/04, we celebrate International Dance Day with - what else? - **Social Ballroom** and **Rhythm 'n' Blues** at the Lighthouse.

---

## Stavros Niarchos Foundation Cultural Center

364 Syggrou Avenue  
176 74 Kallithea

Tel.: +30 2168091000  
Email: [info@snfcc.org](mailto:info@snfcc.org)

Εθνική Βιβλιοθήκη  
της Ελλάδος  National  
Library  of Greece



---

Exclusive donor:

 ΙΔΡΥΜΑ ΣΤΑΥΡΟΣ ΝΙΑΡΧΟΣ  
STAVROS NIARCHOS FOUNDATION