



STAVROS  
NIARCHOS  
FOUNDATION  
CULTURAL  
CENTER

ΚΕΝΤΡΟ  
ΠΟΛΙΤΙΣΜΟΥ  
ΙΔΡΥΜΑ  
ΣΤΑΥΡΟΣ  
ΝΙΑΡΧΟΣ

12.2017  
SNFCC CHRISTMAS WORLD



SNFCC.org



DOWNLOAD THE BLIPPAR APP  
FOR FREE & SCAN SANTA!

# SNFCC Christmas World

Turning into a very special Christmas destination for this year's holiday season, the Stavros Niarchos Foundation Cultural Center invites people of all ages to experience the holiday spirit, with a rich and varied program inspired by the season's magic! The ice rink at the Canal and the Christmas lighting set the stage for unforgettable holiday events for the whole family. Discover the secrets of the Park and find out how you can interact with the holiday lights!

Music abounds in SNFCC's Christmas World! A number of concerts are taking place, starting with the **Simon Bolivar Trumpet Ensemble** on 14/12, presenting exciting pieces from its repertoire, and, a few days later, on 17/12, the same orchestra, along with the young musicians of **El Sistema Greece**, perform music by Mozart, Verdi, Morricone, and a host of other composers. On 18 and 19/12, Greek National Opera's Stavros Niarchos Hall is hosting a panoramic survey of music from the films of **Harry Potter**, our favorite sorcerer. Furthermore, cross-cultural children's choir **Polyphonica**, mixed adult choir **Musica**, and **Camerata Junior** string orchestra are giving a concert on 23/12 at the Lighthouse, beaming us to different parts of the world. On 29/12, just before the curtain drops for 2017, the multifarious drummer **Sera Bellos** and the exuberant British frontman **Bradley White Dale** perform select songs by great artists. Finally, shortly before the end of the holiday season, **Gumbo Ya Ya** and **Sugahspank!** enrapture us all at the Lighthouse!

During the holiday season, **Dionysis Savvopoulos** tells the classic Christmas fairy tale *Iron John* in his own special way and his characteristic warm voice, enchanting young and old alike!

Movie-going is an integral part of the holiday season, and the Stavros Niarchos Hall is steeped in Christmas atmosphere, with screenings of timeless films for the whole family. Our beloved nanny **Mary Poppins**, enchanting **Snow White**, perennial child

**Peter Pan**, **Cinderella**, the Von Trapp family from *The Sound of Music* – they are all here to remind us why we just love Christmas!

At SNFCC, we welcome the New Year with optimism and joy! The party starts early in the morning on New Year's Eve, and fireworks will set the sky ablaze to help usher in 2018. The first race for the New Year, the 4K SNF RUN: 2018 First Run, comes right next.

After that, we all have fun together at a unique party, with an internationally renowned guest DJ – **Gilles Peterson!**

A variety of Christmas and New Year related events and workshops are part of the SNFCC Christmas World. Join us to make our own Christmas decorations and trees; have a family picnic with Santa; print personalized greeting cards; dance under the disco ball; learn how the Christmas tree blinks, and – why not – knit and embroider together with our grandmothers or fathers! All SNFCC food points will be serving festive delicacies, and our shop joins in the festive mood, with gift suggestions for all.

**Parabases**, SNFCC's readers theater series and **SNF Dialogues** continue this month. **Professor Vassilis Kalfas's lecture series** concludes this month, with the pre-Socratic philosophers Parmenides, Democritus and Gorgias.

To mark the International Day of People with Disability (03/12), SNFCC hosts the performance **On Display Global**, in collaboration with the Heidi Latsky Dance Company and the United Nations.

SNFCC's outdoor activities naturally continue, and many new ones are added! Once again in December, admission to all SNFCC sports, educational, and cultural events is free of charge thanks to the exclusive grant of the Stavros Niarchos Foundation.



# 01/12: Let the holidays begin!

The SNFCC Christmas World comes alive on the first day of December: starting at 18.30, every nook and cranny will be filled with light, reminding us that the best time of the year has arrived! The Agora and the Canal will be flooded with colors and forms, evoking a special Christmas ambiance – the ideal setting to experience this year’s Christmas, with the guidance of stand-up comedian Lambros Fisfis.

The Greek National Opera Children's Choir, accompanied by the traditional group of the Pallini Music School, sings Christmas carols to get us in the mood for the season and figure skaters present a unique show especially for the day, with impressive figures, pirouettes, and spectacular costumes set to the sounds of classical music on the ice skating rink at the Canal!

The evening culminates in a party featuring music selected by the journalist and DJ Prokopis Doukas, who has provided music for dozens of parties and collaborated with the greatest Athens radio stations.



## SNFCC Ice Rink

The ice rink is at the heart of SNFCC’s Christmas World, located at the Canal, in front of the holiday-decorated Agora. The ice rink opens in the morning of Friday 01/12, with an impressive show that will make us all want to put on skates, taking place in the afternoon!



## Useful Information

- The ice rink opens daily from 10.00 to 22.00 until 31 January 2018, subject to weather conditions.
- Admission to the ice rink is free, but a pre-registration at [snfcc.org/events](http://snfcc.org/events) is required; maximum stay: 40 minutes.
- Pre-registration will be available weekly (will open every Tuesday at 12.00).
- In order for your pre-registration to be valid, you must arrive at the skating rink at least 20 minutes before the time you have booked for (e.g. if you have booked for 10.00, you must be on the ice rink no later than 09.40). Otherwise, your slot will be re-allocated.
- Ice skates will be available; you can also bring your own.





## Music

### Simon Bolivar Trumpet Ensemble Concert

Thursday 14/12  
20.30

LIGHTHOUSE

14

Founded in 2012, Simon Bolivar Trumpet Ensemble has performed in venues ranging from the Berlin Philharmonic to the Teatro Mayor in Bogota and from there to the Los Angeles City Hall. All eight orchestra members come from the Simon Bolivar Orchestra, under Gustavo Dudamel's artistic supervision and direction, and have been key members of the orchestra since its foundation. On Thursday, 14 December, they present popular music pieces and introduce us to their own special blend of Latin and classical music.

### Simon Bolivar Trumpet Ensemble Concert & El Sistema Greece

Sunday 17/12  
13.00

LIGHTHOUSE

14

As part of its European tour, Simon Bolivar Trumpet Ensemble arrives at the Stavros Niarchos Foundation Cultural Center for a Christmas concert on Sunday 17/12. The eight gifted trumpeters and the young musicians of El Sistema Greece present exciting music pieces by Mozart, Verdi, Morricone, and a host of other composers. Founded by the charismatic Dr. José Antonio Abreu in 1975, El Sistema has developed an educational approach which has been tested in countries and regions facing major challenges, providing opportunities for social inclusion, creativity and joy.



# Music

## Harry Potter

Monday 18/12  
& Tuesday 19/12  
19.00

(by pre-registration at  
[snfcc.org/events](http://snfcc.org/events))

GNO STAVROS  
NIARCHOS HALL

13

A panorama of music from the eight beloved Harry Potter films, signed by four leading composers. Ninety-five minutes of music, following the character from his first appearance to adulthood – a great overview of music composition in the first decade of the 21st century. Oscar-winning composers John Williams (*Superman, Pirates of the Caribbean*), Patrick Doyle (*Hamlet, Murder on the Orient Express*), Alexandre Desplat (*The Grand Budapest Hotel*), and Nicholas Hooper (who won a Grammy for his music for *Half-blood Prince*) evoke a universe that accentuates and complements J.K. Rowling’s storytelling, enabling the countless friends of the little wizard to remember and experience once again the unique world conjured by the world-famous author.

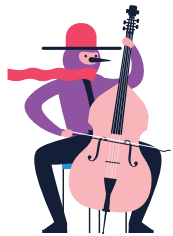
- John Williams: *Harry Potter and the Sorcerer’s Stone* (2001)
- John Williams: *Harry Potter and the Chamber of Secrets* (2002)
- John Williams: *Harry Potter and the Prisoner of Azkaban* (2004)
- Patrick Doyle: *Harry Potter and the Goblet of Fire* (2005)
- Nicholas Hooper: *Harry Potter and the Order of the Phoenix* (2007)
- Nicholas Hooper: *Harry Potter and the Half-Blood Prince* (2009)
- Alexandre Desplat: *Harry Potter and the Deathly Hallows – part 1* (2010)
- Alexandre Desplat: *Harry Potter and the Deathly Hallows – part 2* (2011)

**Featuring** ACADEMICA ATHENS ORCHESTRA  
**Conductor:** Anastassios Symeonidis

**Stage director:** Konstantina Psoma

**Lighting:** Stella Kaltsou

**Assistant conductor:** Theodoros Lembessis



Saturday 23/12  
12.00

LIGHTHOUSE

14

## Polyphonica, Musica & Camerata Junior Concert

One hundred and twenty voices and thirty young string performers join in a Christmas concert for all ages! Three large ensembles – Polyphonica cross-cultural children's choir, Musica Mixed Adult Choir, and Camerata Junior String Orchestra – present original vocal music from all around the world, creating a wonderful Christmas holiday atmosphere.

The Polyphonica cross-cultural music family is an opportunity for children aged 5–17, regardless of ethnic or national background, to participate free of charge in music and arts-focused group activities directed by the music conductors and educators Mariza Vamvoukli, Elsa Kundig, Myrto Ticof and Elli Kosteletou. Today, it counts some 200 members. Available sections include a choir, a workshop of contemporary dance, African dance and percussion, theater, and ukulele, as well as a choir based on Mytilene for refugee, immigrant and Greek children.

Musica – Friends of Music Society choir is addressed to adults who love choral music; members are selected by audition. The choir currently has 85 members. The choir is directed by music conductor and educator Dimitris Bouzanis. Also operated by the Friends of Music Society is the Camerata Junior string orchestra, which has evolved into a promising music ensemble – a greenhouse for future artists in Greek and international professional orchestras. Today, it has some 60 members, aged 7–25. The Camerata Junior is directed by the Athens State Orchestra's principal violinist, Dimitris Semsis.



## Music



### Sera Bellos Sextet ft. Bradley White Dale

Friday 29/12  
21.00

LIGHTHOUSE

14

The multifarious drummer Sera Bellos and the exuberant British frontman Bradley White Dale present a nostalgic holiday music program at SNFCC. The concert includes songs by artists who died recently (David Bowie, George Michael, Prince, Amy Winehouse, Whitney Houston, Michael Jackson, and more).

Bradley began singing from a young age as a church choir member. He studied foreign languages and later theater and cinema in New York, where he lived for four years, performing regularly at the city's venues. He has sung all over the world and now considers Athens as his home away from home.

This multinational sextet consists of gifted musicians who are well-known in the Greek jazz scene. They approach their favorite jazz and soul numbers with their own, special touch

Bradley White Dale: Vocals | Sera Bellos: Drums  
François Gordigiani: Guitar | Alessandro Carnevali: Saxophone  
Leda Brouskari: Piano | Lambros Papanikolaou: Bass



### Gumbo Ya Ya ft. Sugahspank!

Friday 05/01  
21.00

LIGHTHOUSE

14

Gumbo Ya Ya present a unique holiday concert of New Orleans music exclusively for SNFCC's visitors.

Six years ago, when American pianist John Higgins moved to Greece, he formed an all-star band playing his favorite kind of music – New Orleans Jazz & Blues. The act began to perform at John's restaurant, and its reputation soon took off by word of mouth.

Gumbo Ya Ya's music combines get-up-and-dance beats with funky brass riffs. An artist that never ceases to experiment in lesser-known styles, Piraeus-based singer Sugahspank! adds her profoundly expressive voice to the mix.





Dionysis Savvopoulos

## IRON JOHN

Storytelling featuring art  
by Alexis Kyritsopoulos

Thursday 21/12 & 04/01  
Friday 22/12  
Sunday 24/12  
Tuesday 26/12 & 02/01  
Wednesday 03/01  
18.00

For "children"  
of all ages

(by pre-registration  
at [snfcc.org/events](http://snfcc.org/events))

LIGHTHOUSE

14

*Iron John* is a riveting tale from the Brothers Grimm. It has always caught the lively interest, not only of storytellers and audiences, but also of folklorists, psychoanalysts, and educators.

Inspired from this fairy tale, Dionysis Savvopoulos stages a unique storytelling performance at SNFCC Lighthouse.

Alone on stage, with his guitar, surrounded by Alexis Kyritsopoulos's art, he unfolds the magic tale of *Iron John*, a child's adventurous journey to adulthood.

**Set construction and lighting design:** Periklis Mathielis

# Park Your Cinema:

## The city's most Christmassy big screen

**Park Your Cinema** returns to the **Stavros Niarchos Foundation Cultural Center** in a festive mood, with screenings of all-time favorite family films – films of long-lasting appeal to generations of viewers, films we watch again and again, now in an opportunity to enchant us on the big screen.

The Greek National Opera – Stavros Niarchos Hall is an ideally prestigious venue to host these hugely successful classic films' screenings during the Christmas season – from ***Mary Poppins*** and ***The Sound of Music*** to some of the greatest animated feature films that form Walt Disney's cultural heritage from the late 1930s to the 1950s. Hollywood productions that established timeless legends and offered escape through cinema at a time when humanity needed it the most. Such films will never cease to offer this kind of escape to viewers across the globe.

The Christmas holiday season is a great opportunity for a family to share quality moments of joy, and cinema can add a touch of magic and fun in a way that nothing else can. Let's experience it together on the city's most Christmassy big screen for 2017.

Elias Fragoulis



### Mary Poppins (1964)

Saturday 23/12  
11.30

(by pre-registration  
at [snfcc.org/events](http://snfcc.org/events))

NLG STAVROS  
NIARCHOS HALL

13

A neglectful father hires as his children's nanny a mysterious woman who turns out to possess magical abilities – just what it takes for getting this dysfunctional family back into shape! The legendary musical-fantasy film that combines live-action and animation scenes has been Disney's biggest box-office hit for over two decades. It was nominated for 13 Oscars and was awarded in 5 categories (Academy Award for Best Actress, Best Editing, Best Original Music, Best Visual Effects, and Best Song (for *Chim Chim Cher-ee*). The film was in fact Julie Andrews' supercalifragilisticexpialidocious debut.

**Directed by:** Robert Stevenson

*With Greek subtitles*





## Park Your Cinema

### The city's most Christmassy big screen

#### Snow White and the seven dwarfs (1937)

Monday 25/12  
11.30

(by pre-registration  
at [snfcc.org/events](http://snfcc.org/events))

NLG STAVROS  
NIARCHOS HALL

13

Exiled in a forest due to a bitter rivalry with her evil stepmother, a beautiful princess finds unexpected allies in seven eccentric dwarfs. Walt Disney Productions' first feature-length animated film was based on the classic Brothers Grimm fairy tale – yet, the film adaptation surpassed the original in popularity. Adjusted for inflation, the film's earnings in the U.S. only mean that the film remains one of the top 10 box office hits of all time!

**Directed by:** David Hand

*The film is dubbed in Greek*



#### Cinderella (1950)

Wednesday 27/12  
11.30

(by pre-registration  
at [snfcc.org/events](http://snfcc.org/events))

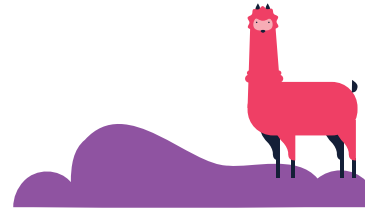
NLG STAVROS  
NIARCHOS HALL

13

The sweet and beautiful Cinderella cannot go to the Royal Ball because her cruel stepmother hopes to marry one of her two daughters to the bachelor prince. Two lovable mice and a good fairy will save the day! Charles Perrault's fairy tale was adapted for the silver screen and saved Disney's studio from financial disaster (World War II made it impossible to distribute animated films to Europe). The glass slipper was worn two more times (in home entertainment), while in 2015 Kenneth Branagh directed a live-action version of the story.

**Directed by:** Clyde Geronimi, Wilfred Jackson, Hamilton Luske

*The film is dubbed in Greek*



#### Peter Pan (1953)

Tuesday 26/12  
11.30

(by pre-registration  
at [snfcc.org/events](http://snfcc.org/events))

NLG STAVROS  
NIARCHOS HALL

13

In the early 1900s in London, three brothers live the greatest adventure of their lives, following their fantastical hero to the magical land of Neverland. Walt Disney's 14th animated feature-length production, the film is based on a successful play by Scottish playwright J.M. Barrie, which introduced in popular culture the legend of the boy who never grew up. The character first appeared in Barrie's 1902 novel for grown-ups, *The Little White Bird*, and debuted in a London theater production two years later. Walt Disney himself played Peter Pan in a school play!

**Directed by:** Clyde Geronimi, Wilfred Jackson, Hamilton Luske

*The film is dubbed in Greek*



#### The Sound of Music (1965)

Saturday 06/01  
11.30

(by pre-registration  
at [snfcc.org/events](http://snfcc.org/events))

NLG STAVROS  
NIARCHOS HALL

13

A nun from Salzburg is hired as governess to the seven children of a widowed Navy officer in 1938. None of them anticipates the changes that love and the Third Reich will bring into their lives. A favorite Broadway musical of 1959 turns into a cinematic legend, breaking every single box-office record. It was the first film that broke the 100-million-dollar barrier, displacing *Gone with the Wind*. Nominated for 10 Oscars, it took home half, for Best Film, Best Director, Best Film Editing, Best Original Score, and Best Sound. It's a great opportunity to brush up on the lyrics of *The Hills Are Alive* with the *Sound of Music*!

**Directed by:** Robert Wise

*With Greek subtitles*





# New Year's Eve

On the last day of the year, SNFCC's festive events start in the morning! Enjoy a unique skating show by poweskate.eu (p. 33), and have fun at the Agora, with Circus Dayz' impressive stilt dancers, jugglers, and acrobats (p. 27).

It goes without saying that we are looking forward to counting down to the New Year with you all, welcoming 2018 at a unique New Year's party, dancing to the mix of music played by the world-renowned DJ Gilles Peterson and thousands of fireworks!



Right at the start of the new year.

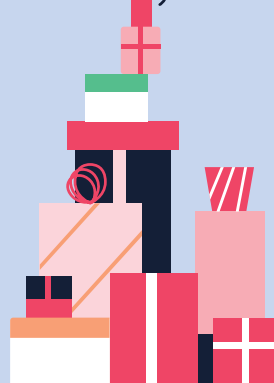
(up to 2017 participants by pre-registration at [snfcc.org/events](http://snfcc.org/events))

Starting point: ESPLANADE

17

00.00

AGORA



## SNF RUN: 2018 First Run!

Get a head start on 2018 by joining in the very first race of the year! A celebration of hope, a 4K night-time race starting and finishing at SNFCC, with lots of music, dance, and treats. Join us to celebrate New Year's Eve!

Design-Implementation: Regeneration & Progress



## Gilles Peterson & MC General Rubbish

The world-renowned music producer Gilles Peterson arrives at the Stavros Niarchos Foundation Cultural Center to celebrate with us the advent of the new year in a DJ set that you cannot miss!

Gilles Peterson's love for music and his multifaceted talents helped him make his mark in a crowded market. BBC Radio 6 Music's favorite producer is currently participating in radio programs broadcasting from Paris to Sydney and from France and Berlin to Shanghai, and has recently established his own digital radio platform, Worldwide FM, broadcasting from London.

From the 1980s to the present, Gilles has led a long and successful career as the director of record labels, such as Acid Jazz, Talkin' Loud, and his current venture, Brownswood Recordings. Over the course of these years, he has curated more than 100 compilations and taken part in several international music projects, including *Havana Cultura* series, *Brasil Bam Bam Bam* album, *La Clave* documentary, and many more. And he did not rest on his laurels; his passion for music unabated, Peterson organizes the annual Worldwide Awards in London, with the year's best music, as well as Worldwide Festival, which takes place in two editions, one every March in Switzerland and the second every July in France.

Come enjoy this unique artist in SNFCC's magical world and create the first memories of 2018 together!



# New Year's Day

## Vienna Philharmonic Orchestra – New Year's Concert

Monday 01/01  
12.15

*(by pre-registration  
at [snfcc.org/events](http://snfcc.org/events))*

**GNO STAVROS  
NIARCHOS HALL**

13

We welcome the new year with one of the world's foremost orchestras – the Vienna Philharmonic. The well-established annual meeting – a global music event on the first day of each year – this year's New Year's Concert is directed by Riccardo Muti, the renowned conductor from Naples who has worked with the Vienna Philharmonic for decades. The concert features music by Johann and Josef Strauss, Franz von Suppé, and Alphonz Czibulka.

The concert will be broadcast in 90 countries and viewed by 50 million people. You can enjoy it live on the giant displays set up in two locations at the Stavros Niarchos Foundation Cultural Center.



# Dialogues

Wednesday 20/12

(by pre-registration  
at [snfcc.org/events](http://snfcc.org/events))

NLG BOOK CASTLE

11

Dialogues is the new monthly series of events organized by the Stavros Niarchos Foundation (SNF), aiming at bringing to public attention people who inspire with their thoughts and actions, civil society representatives, people who are active in different areas, possibly even countries.

Dialogues will highlight aspects of the main themes with which the SNF engages: Arts and Culture, Education, Health, Sports, and Social Welfare. Through open public events, SNF hopes to stimulate discussion on key issues, establish a platform for the exchange of ideas, introduce people who develop new ways of thinking, and build bridges of cooperation among individuals and groups throughout the world.

Events take on flexible, multiple forms to best serve each topic, including panel discussions and presentations. Dialogues are open to the public, and participation is subject to online pre-registration on a first come first served basis. In addition, events are broadcast live, and the audio and video media are made available on the SNF website.

On Wednesday, 20 December, SNF organizes the second edition of Dialogues, hosted at the Book Castle.

Information: [www.snf.org](http://www.snf.org)

SNFCC'S READERS THEATER

# Parabases

*George Seferis: Days of '25-'30*

A theatrical adaptation of George Seferis's only complete prose work, *Six Nights on the Acropolis*, and the poet's journal, *Days of '25-'30*.

*Six Nights on the Acropolis* – originally written in 1926–30, took its definitive form in 1954 and was published in 1974, three years after the poet's death. Both this and his journal of the same period reflect the young Seferis's struggle, now back in Greece after his studies abroad, as well as the struggle of his fictional alter ego, aspiring poet Stratis, to attain existential, romantic, and poetic fulfilment.

The setting is Athens, a city in turmoil in the aftermath of the Asia Minor disaster. And the poet, a Dante descending into Hell, *treating shadows as if they were creatures of substance and claiming that art does not imitate: Art creates. The world.*

**Dramaturge – Director:** Efi Theodorou  
**Featuring:** Maria Kitsou, Giorgos Christodoulou  
**Piano, Synthesizers:** Nikos Platanos

George Seferis's excerpts used in the performance courtesy of Anna Lontos

Late seating is only possible during the intermission

Sunday 10/12  
16.00-17.30

LIGHTHOUSE

14



## On Display Global

Sunday 03/12  
18.30

NLG LOBBY

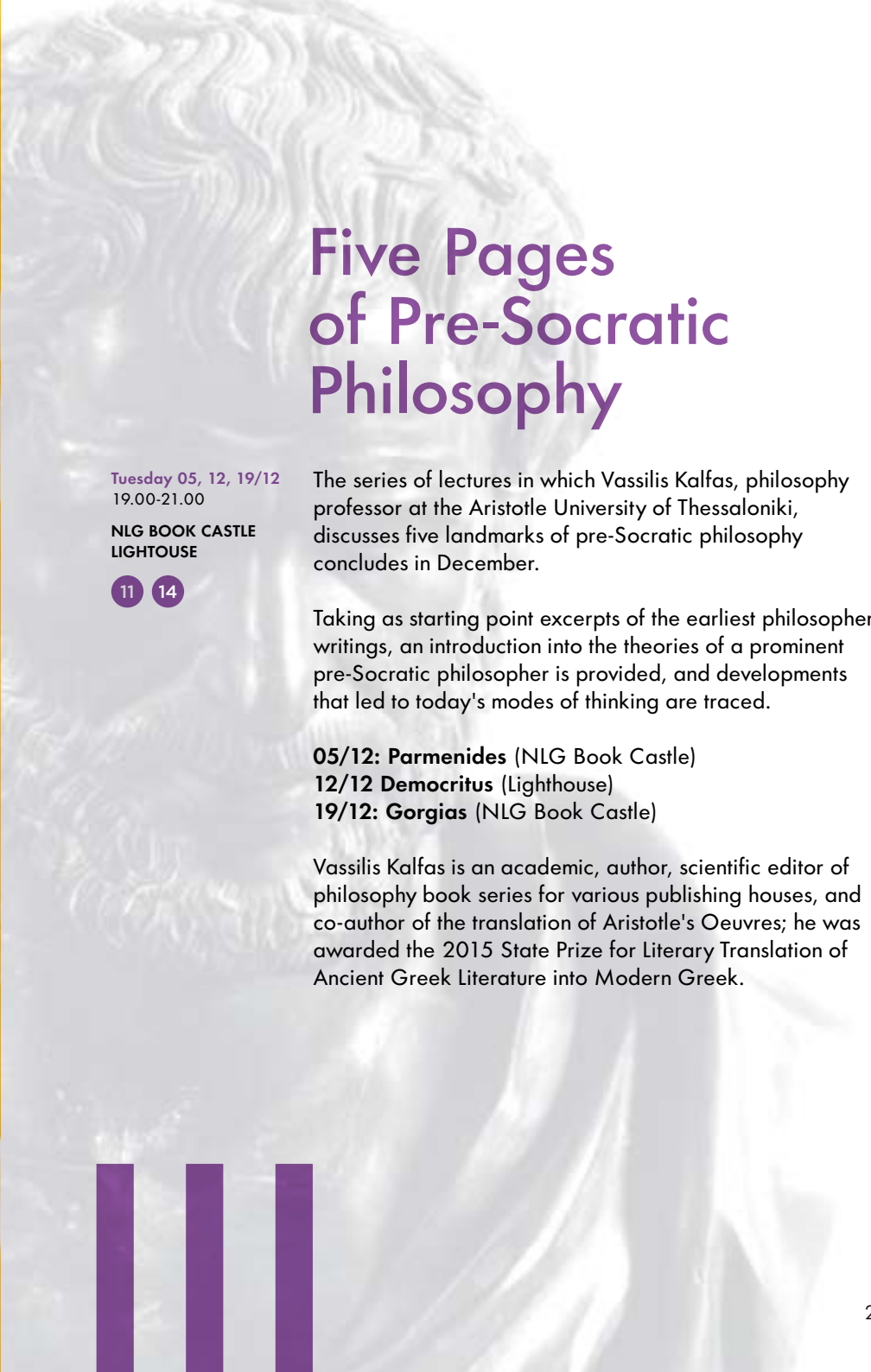
11

SNFCC contributes to the International Day of People with Disabilities (03/12), with a performance, On Display Global. This international initiative is the result of the choreographer Heidi Latsky's collaboration with the City of New York and the UN to celebrate the 25th anniversary of the signing of the Employment Opportunities for Disabled Americans Act.

It is a moving art installation, a deconstructed art exhibition/fashion show, a commentary on the body as spectacle and our society's obsession with body image. People with disabilities, showbiz people, and fashion world figures are often treated as objects and sightseeing opportunities. Reversing this gaze is a focal point of choreographer Heidi Latsky's installation on view at SNFCC in collaboration with Greek choreographer Apostolia Papadamaki. The intense and complex relationship between observer and observed is at the heart of this moving art installation, in which the participants themselves are the sculptures.

**Design-Implementation:**  
Heidi Latsky Dance, Apostolia Papadamaki

*On Display Global performance first went on view at SNFCC during Summer Nostos Festival 2017*



## Five Pages of Pre-Socratic Philosophy

Tuesday 05, 12, 19/12  
19.00-21.00

NLG BOOK CASTLE  
LIGHTHOUSE

11 14

The series of lectures in which Vassilis Kalfas, philosophy professor at the Aristotle University of Thessaloniki, discusses five landmarks of pre-Socratic philosophy concludes in December.

Taking as starting point excerpts of the earliest philosophers' writings, an introduction into the theories of a prominent pre-Socratic philosopher is provided, and developments that led to today's modes of thinking are traced.

**05/12: Parmenides** (NLG Book Castle)

**12/12 Democritus** (Lighthouse)

**19/12: Gorgias** (NLG Book Castle)

Vassilis Kalfas is an academic, author, scientific editor of philosophy book series for various publishing houses, and co-author of the translation of Aristotle's Oeuvres; he was awarded the 2015 State Prize for Literary Translation of Ancient Greek Literature into Modern Greek.



## Electricity Labs: The blinking Christmas tree!

Friday 01, 08/12  
18.30-20.30

For children aged 8-13  
(up to 15 participants)

NLG KIDS LAB

11

How do flashing Christmas lights work? How are electrical circuits made? What is the difference between an open circuit and a closed circuit? What are LEDs? Find out the answers to these and many other questions in a children's workshop on electricity. At the end of the workshop, all children take with them their own blinking Christmas trees!

**Design-Implementation:** Tina Nantsou, Physicist  
**Implementation:** Olympia Triantafyllou, Preschool Teacher

## Family Adventure Park

Saturday 02/12  
& 06/01  
11.00-13.00

For ages 4-65

(up to 400 participants  
by pre-registration at  
snfcc.org/events)

GREAT LAWN

1

A Christmas adventure for all the family! In collaboration with dad or mom, children go through successive challenges that require balance, accuracy, speed, and a team spirit. Each pair can, if they so wish, compete with another pair, or race against the timer!

**Design-Implementation:** Regeneration & Progress



## Picnic with Santa Claus and artists from all around the world

Sunday 03, 10, 17,  
24/12 & 07/01  
11.00-13.30

For children aged 4+  
and their parents

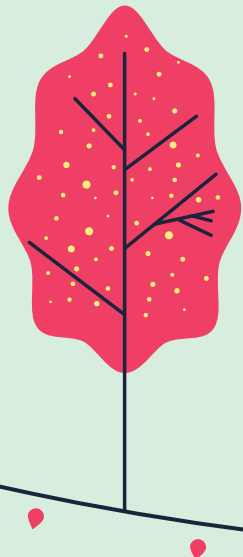
GREAT LAWN

1

A Christmas picnic of mystery and art at the Great Lawn in the Park!

Guided by a tablecloth map and wooden arrows that point towards the direction of the sleigh, we try to find the lost items that Santa left by the fireplace in homes all around the world! The magic basket will open and help us to make paintings and drawings inspired by David Hockney, Jean Michel Basquiat, Joseph Beuys, Jeff Koons, and other contemporary artists. Santa's sleigh starts at the Great Lawn. Beware of reindeer roaming about!

**Design-Implementation:** Playroom



Monday 04, 11/12  
19.00-21.00

(up to 25 participants  
by pre-registration at  
snfcc.org/events)

NLG KIDS LAB

11

## Christmas ornaments

A creative workshop to make Christmas ornaments together! Using various techniques and simple materials, such as colored ribbons, buttons, and wire, we make unique handmade ornaments to decorate the tree or give to our loved ones!

**Design-Implementation:** Margarita Myrogianni, Artist

## Trial Labs: Pomegranates for a lucky New Year!

Wednesday 06, 13,  
20/12  
18.00-19.30  
19.30-21.00

For adults

(up to 15 participants  
per session)

NLG KIDS LAB

11

In December, we discover the possibilities and extensive techniques of oil pastels on velvet paper. We make our own red fruits of good fortune, inspired by the pomegranate and its symbolic use in works by Greek artists.

**Design-Implementation:** Christina Tsinisizeli, Artist

## Christmas art-making

Something funny is happening in SNFCC's Kids Lab! Christmas goblins (also known as kallikantzaroi in Greece) have sneaked in and run riot! Gold dust is all over the place, ribbons have come out of their boxes, wooden toys have run away, and the Christmas tree is gone! Little artists-elves are desperately wanted to restore order. Can you help?

*To best enjoy the program, participants are advised to wear comfortable clothing.*

**Design-Implementation:** Irene Persidou, Art Historian, Educational Entertainer

**Implementation:** Christina Meimaridi, Museum Educator

Thursday 07, 14, 21,  
28/12 & 04/01  
17.30-18.15

For children aged  
1-3 with their parents

(up to 20 children by  
pre-registration at  
snfcc.org/events)

NLG KIDS LAB

11

## Print your own wish!

Sunday 10, 17/12  
11.30-14.30

For children and adults

(up to 50 participants  
per 30' on a first-come  
first-served basis)

PARK KIOSK

A Christmas silk-screen printing and calligraphy workshop for all ages. Participants print their own greeting cards using silk-screen printing and then, with the calligrapher's help, come up with their own personal wishes for the holidays!

**Design-Implementation:** Chryssanthos & Manolis Angelakis / Tind, Konstantina-Polytimi Zerdeva-Brikori



**Friday 15/12**  
18.30-20.30

For children aged 4-6 with their parents

*(up to 15 children by pre-registration at [snfcc.org/events](http://snfcc.org/events))*

**NLG KIDS LAB**

11

## The waiting stocking!

We're having fun learning how to decorate Christmas stockings until they're filled with gifts!

\*Participants may bring their own pieces of old cloth or socks.

**Design-Implementation:** Christina Tsinisizeli, Artist



## Mistakes Labs: Christmas circle tree!

This Christmas, Russian painter Wassily Kandinsky's circles morph into balls to decorate the Christmas tree - which will magically appear by using masking tape on paper!

**Design-Implementation:** Christina Tsinisizeli, Artist

**Saturday 16, 23, 30/12**

17.00-18.00  
18.00-19.00  
19.00-20.00

For children of all ages and their parents

*(up to 30 participants per session)*

**NLG KIDS LAB**

11

## DIY Christmas tree

To promote recycling, we invite young and old to make and decorate a small Christmas tree using recyclable cardboard. Designed as a pendant or table-top, the tree will be made of geometric shapes that allow easy assembly, storage, and rearrangement.

**Design-Implementation:** Artemis Papageorgiou / Entropika Lab

**Monday 18/12**  
**Tuesday 19/12**  
19.00-21.30

For adolescents aged 17+ and adults

*(up to 25 participants by pre-registration at [snfcc.org/events](http://snfcc.org/events))*

**NLG KIDS LAB**

11

**Sunday 24/12**  
12.00-13.15

**Sunday 31/12**  
13.30-14.45

**AGORA**

12

## Christmas roads

Impressive stilt walkers, jugglers, acrobats, and mimes will enchant people of all ages with a Christmas show in Christmas-decorated SNFCC.

**Design-Implementation:** Circus Dayz



## Weaving wishes

A festive art workshop exploring our desires for the new year by painting and weaving paper wishes for Christmas and New Year. Our fabric is unstitched while our wishes are shared among our loved ones!

**Design-Implementation:** Christina Tsinisizeli, Artist

**Friday 22/12**  
18.30-20.30

For children aged 6-8 with their parents

*(up to 15 children by pre-registration at [snfcc.org/events](http://snfcc.org/events))*

**NLG KIDS LAB**

11



## Storytelling: Running wild at the mill

Mischievous goblins and sly gremlins love to cause mayhem for humans during the holiday season. A young girl, a miller, and a midwife came across them by the mill on Christmas, and their lives changed forever! A live performance featuring legends of the Twelve Days of Christmas, traditional Greek fairy tales of the season, and carols from all over Greece.

**Design-Implementation:**

Antonia Velliou, Storyteller, Museum Educator  
Ifigenia Kakridoni, Storyteller, Museum Educator

**Friday 22, 29/12**  
17.30-19.00

For children aged 4+ and their parents

*(up to 25 children by pre-registration at [snfcc.org/events](http://snfcc.org/events))*

**NLG BOOK CASTLE**

11





## Me and my family through the needle's eye



Drawing inspiration from traditional crochet, these workshops invite young and future parents and grandparents to create handiwork telling personal stories about maternity and paternity. No prior experience in knitting or crochet required.

**Design-Implementation:** Very Young Contemporary Art-VYCA



## Christmas Textile Heroes

**Saturday 23, 30/12**  
12.00-14.00

For children 4-7, ideally with their grandmothers

*(up to 25 children by pre-registration at [snfcc.org/events](http://snfcc.org/events))*

**NLG KIDS LAB**

11

Using permanent markers, little ones and big ones paint imaginative figures on pieces of cloth. We then stitch them together, fill them with soft material, and make plush figures.



## Knitted Sculpture (Toshiko Horiuchi-MacAdam)

**Wednesday 03/01**  
11.00-14.00

For future and young parents with their babies

*(up to 20 participants by pre-registration at [snfcc.org/events](http://snfcc.org/events))*

**NLG BOOK CASTLE**

11

Participants are introduced to the relaxing craft of crochet, making toys improvised from multicolored yarn.



## Crochet self-portrait: Their first doll (Louise Bourgeois)

**Thursday 04/01**  
11.00-14.00

For future and young parents with their babies

*(up to 20 participants by pre-registration at [snfcc.org/events](http://snfcc.org/events))*

**NLG BOOK CASTLE**

11

Participants discover basic embroidery techniques and sew their self-portrait on soft cotton cloth, making a tender doll rattle for the baby! In addition to the materials provided, you may bring your own fabric of special emotional value.





**Sunday 24/12, 07/01**  
17.00-18.00  
trial for children aged  
6+ and adults

18.00-18.30 show

*(up to 20 participants  
per 30')*

**VISITORS CENTER**

VC



## Hula Hoop LED Show!

Hoop it! presents an exciting show with colorful LED hula hoops at SNFCC! Join us with your family, friends, or solo to try out hula hoop, play, and enjoy a unique dance show in a festive atmosphere!

\*Hula Hoop LED Show is open to all – no prior experience required.

**Design-Implementation:** Hoop it!

**Tuesday 26/12**  
17.30-19.30

For children aged 3+  
with their parents

*(up to 15 children per  
30' by pre-registration  
at snfcc.org/events)*

**NLG BOOK CASTLE**

11

## Smile, and I'll tell you a story!

The characters of Christmas fairy tales spring to life through interactive narratives. Which story will pop out of the book to enchant us?

Each story lasts 30 minutes.

**Design-Implementation:**

Antonia Velliou, Storyteller, Museum Educator; Ifigeneia Kakridoni, Storyteller, Museum Educator

## We create art all together: Toy recycling Workshops for children 7+, young people and families, with or without disabilities

This Christmas, our old, broken toys turn into the best handmade gifts! Dolls, teddy bears, puppets, and plastic figures morph into fantastic comic-book characters and animation figures. Join us with all the toys you don't use anymore, and together we will deconstruct them and make sculptural compositions and new functional toys out of their fragments.

**Design-Implementation:**

Thodoris Zafeiropoulos, Artist  
Elissavet Chelidoni, Artist – Special Education Teacher

**Wednesday 27/12**  
18.00-20.00

For children aged 4-9  
with their parents

*(up to 100 children by  
pre-registration at snfcc.  
org/events)*

**LIGHTHOUSE**

14

## Dream Disco Kidz: Christmas in space

How do aliens celebrate Christmas? Will the snowman do the dance of the planet Dunga Bunga? Can Santa Claus send a letter to all children asking for a gift? Find out all the answers on board our imaginary spacecraft while we explore ways to communicate with goblins and aliens!

Little ones and grown-ups alike dance wildly under the disco ball – DJ Prima Vera plays hits of the past decades and contemporary tunes.

**Design-Implementation:** abariza



**Thursday 28/12**  
**Saturday 30/12**  
**Wednesday 03/01**  
11.00-13.00

For children aged 5-12

*(up to 400 participants)*

**GREAT LAWN**

1

## Christmas games

Just before setting out on his long journey, Santa Claus realizes something terrible: his clothes, boots, and the entire sleigh, loaded with gifts, have vanished into thin air! How can he bring so many children their gifts?

Children are invited to the Great Lawn to solve the case with the help of elf-coaches and find the missing toys through fun group activities.

**Design-Implementation:** Regeneration & Progress



## Xmas Walker Race

Friday 29/12  
11.00-13.00

For children aged 2.5-5  
(up to 300 participants)

VISITORS CENTER

VC



Every child is a winner in this unique fun race! Wearing Santa Claus hats, children compete with balance bikes on a specially designed track. At the end of the race, one of the participants will win an Ideal 16-inch bike - their first regular bike!

\*Our little friends bring their own bikes  
\*Helmet use is mandatory

**Design-Implementation:** Mbike



## Holiday boats

Friday 29/12  
11.30-14.30

For children, adults,  
and families

(up to 75 participants,  
workshops on an  
ongoing basis)

NLG KIDS LAB

11

In the Greek tradition, children, inspired by the long journeys of their loved ones, used to build boats from simple materials. A votive offering to Saint Nicholas for good weather and luck in the New Year, this custom of decorating boats for Christmas symbolizes the new journey that begins with the New Year.

Using sophisticated techniques, including origami, woodcutting, and collage, as well as various materials and colors, workshop participants design and assemble boats for the New Year 2018.

**Design-Implementation:**

Katerina Zafeiropoulou, Artist  
Thodoris Zafeiropoulos, Artist



## Roller Skates Show

Sunday 31/12  
11.30-13.30

AGORA

12

A special Christmas skating show at SNFCC!

**Design-Implementation:** Powerskate.eu.



Friday 05/01  
11.00-14.00

For families per 15'  
/painter

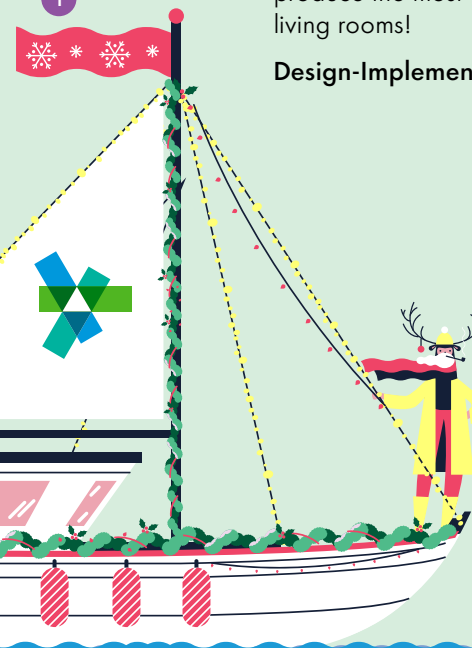
GREAT LAWN

1

## Family portraits for 2018!

Exciting things happen at the Park! Wearing paper caps and scarves made of dry leaves, outdoor painters will be there ready to make your family portraits. Rather than pencils and erasers, they use papercuts, improvised brushes, seals, and many other tools and materials specially selected to produce the most extraordinary portraits to decorate your living rooms!

**Design-Implementation:** Playroom



## Activities for adults

### SPORTS & WELLNESS

Saturday 09, 16, 23,  
30/11 & 06/01

Sunday 10, 17, 24,  
31/11 & 07/01

09.00-10.00 (aged 6-9)  
10.00-11.00 (aged 9-12)  
12.00-13.00 (aged 12-17)  
11.00-12.00 & 13.00-  
14.00 (17+ and adults)

(up to 15 participants  
per 60' and by  
pre-registration at  
snfcc.org/events)

CANAL

16

Saturday 02, 09,  
16/12 & 06/01  
08.30-10.00

For ages 15-70

Teenagers aged  
15-18 must have written  
parental/guardian  
consent to participate

(up to 50 participants)

VISITORS CENTER

VC

### Sailing the Canal

The Kalamaki Yacht Club presents a series of interactive sailing events on different types of boats, both in the Canal and on shore, featuring innovative educational activities for children and adults.

**Design-Implementation:** Kalamaki Yacht Club

### SNFCC Running Team

The Park's running friends join forces in a team that trains every Saturday under the guidance of experienced endurance coaches. The goal is to improve individual performance through group training and group support.

**Design-Implementation:** Regeneration & Progress



## Activities for adults

### SPORTS & WELLNESS

Saturday 09, 16,  
23, 30/12 & 06/01

Sunday 10, 17,  
24/12 & 07/01

14.30-17.00

For children aged  
12+ and adults

(up to 15 participants  
per 30' by  
pre-registration at  
snfcc.org/events)

CANAL

16

Sunday 03, 10, 17,  
24/12 & 07/01  
11.00-13.00

ESPLANADE

17

### Kayaking the Canal

This course aims to familiarize children and adults with kayaking, under the coaching of experienced instructors. At the same time, it is a great way to get to know the SNFCC, enjoying water sports in the Canal!

**Design-Implementation:** Regeneration & Progress

*\*In November Kayaking the Canal will take place on Visitors Center side.*

### Petanque

A fun, social sport promoting wellness, a game of boules enhances accuracy, coordination, concentration, self-confidence, and is a great opportunity to be outdoors. Competitors, one-on-one, or team against team, try to get as close as possible to a target by throwing metal balls.

**Design-Implementation:** Regeneration & Progress



## Activities for adults

### SPORTS & WELLNESS



#### Fitness for everyone

On a daily basis, experienced physical education instructors are available at the outdoor gym to offer advice and training recommendations, and provide your personal fitness evaluation. You can sign up for a personalized program including aerobic exercise, muscle enhancement, flexibility exercises and rehabilitation.

**Design-Implementation:** Regeneration & Progress



#### Mat Pilates

A creative way to keep in shape focusing on strengthening the body's core, which helps us to maintain correct body posture and improves flexibility and balance. Pilates exercises help improve mood and eliminate stress. Suitable for men and women of all ages and levels, Pilates takes place on a mat, using props, such as rings, resistance bands and balls.

\*Participants must wear comfortable clothing and bring their own pilates mat.

**Design-Implementation:** Regeneration & Progress

Monday-Friday  
(except 25, 26/12  
& 01/01)  
18.30-21.30

**OUTDOOR GYM**

6

Monday 04, 11, 18/12  
07.45-09.00

Wednesday 06, 13,  
20, 27/12 & 03/01  
07.45-09.00  
18.00-19.00

Thursday 07, 14, 21,  
28/12 & 04/01  
18.00-19.00

Friday 01, 08, 15, 22,  
29/12 & 05/01  
07.45-09.00

(up to 30 participants)

**GREAT LAWN**

1

## Activities for adults

### SPORTS & WELLNESS

#### Qigong

Age-old Chinese practice suitable for all fitness levels, in a program designed specifically for people over 50. Qigong combines mild, slow, repetitive movement with kinesthetic concentration, meditation, and breathing control.

**Design-Implementation:** Regeneration & Progress



#### Yoga in the Park

Yoga helps coordinate physical movement and mental processes through gentle practice involving breathing, asana postures, and relaxation in order to gain self-control and concentration, peace of mind, and develop positive thinking.

\*Participants must wear comfortable clothing and bring their own yoga mat as well as a small blanket to cover up during relaxation.

**Design-Implementation:** Regeneration & Progress

Wednesday 06, 13, 20,  
27/12 & 03/01

Thursday 07, 14, 21,  
28/12 & 04/01  
09.00-10.15

For adults 50+

(up to 30 participants)

**LABYRINTH**

4

Monday 04, 11,  
18/12  
18.00-19.30

Tuesday 05, 12, 19,  
26/12 & 02/01  
08.00-09.30

Thursday 07, 14, 21,  
28/12 & 04/01  
08.00-09.30

Friday 01, 08, 15, 22,  
29/12 & 05/01  
18.00-19.30

(up to 30 participants)

**GREAT LAWN**

1



## Activities for adults

### SPORTS & WELLNESS



Tuesday 05, 12, 19,  
26/12 & 02/01  
16.30-17.45

PINE GROVE

2

Saturday 02, 09, 16,  
23, 30/12 & 06/01  
08.30-09.45

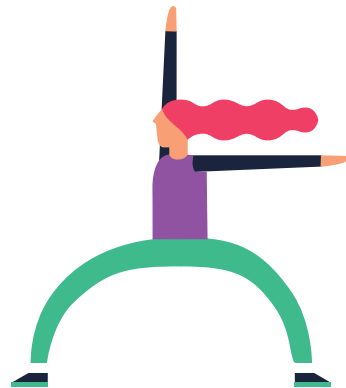
GREAT LAWN

1

### Tai Chi

An ancient Chinese martial art evolved into a pleasant and low-intensity form of exercise. Slow, focused movement and deep breathing help to reduce stress and anxiety, while increasing flexibility and balance. Tai Chi is suitable for all ages and all fitness levels.

**Design-Implementation:** Regeneration & Progress



Wednesday 13/12  
17.30-19.00  
19.00-20.30

NLG  
MULTIFUNCTIONAL  
ROOM

11

### First-Aid Courses

Learn how to give first aid and find out about immediate and effective treatment of health problems and symptoms that can threaten human life.

A non-certified training is offered for heart attack and drowning incidences, as well as the use of an Automated External Defibrillator. Lastly, participants will have a hands-on experience with the use of specifically designed models/preforms.

**Design-Implementation:** Regeneration & Progress



## Activities for adults

### NATURE



Monday 04, 11, 18/12  
18.30-20.30

NLG BOOK CASTLE

11

### Gardening: advanced section

Practical advice on how to cultivate popular ornamental, vegetable, fruit and aromatic plants. Participants learn about this month's seasonal tasks and specialized issues such as pruning, plant propagation, fertilizer handling and more. They discover the nutritional value, beneficial properties, and proper maintenance and consumption of plants and vegetables, as well as familiarize themselves with topics such as green building, green roofs, and healing gardens.

**Design-Implementation:** Taxiarchis Andritsopoulos, Agronomist, AUA



Tuesday 05, 12, 19/12  
11.00-12.30

Saturday 02, 09, 16,  
23, 30/12 & 06/01  
10.30-12.00

(up to 25 participants)

VEGETABLE GARDEN

20

### The Green Fingers

Engaging with plants offers pleasure and contributes to mental balance and well-being, providing relaxation in our hectic everyday life while raising environmental awareness. In this activity, participants will familiarize themselves with the world of plants and learn what they need and how to care for them.

**Design-Implementation:**  
Stavroula Katsoyanni, Agronomist - Landscape Architect  
Stamatis Kavassilis, Agronomist - Soil Specialist



## Activities for adults

### IDEAS LABS

#### Workshops for those who forget a little or a lot!

Tuesday 05, 12, 19/12 & 02/01  
18.00-20.00

For adults 50+

(up to 20 participants)

NLG  
MULTIFUNCTIONAL  
ROOM

11

Improve your memory and other mental functions through play and fun. The aim of these activities is mental mobilisation, physical wellbeing, increase in self-confidence and socialisation. With the guidance of experienced educators, you take part in games which combine mental and physical exercise as well as psychological mobilisation. The program is designed for men and women who want to remain healthy and active! Not to forget that the combination of mental and physical activity contributes decisively to the prevention of dementia and Alzheimer's disease.

**Design-Implementation:** Regeneration & Progress

**Scientific Supervision:** Scientific Implementation: Greek Association of Alzheimer's Disease and Related Disorders (Alzheimer Hellas)

## Activities for adults

### TECHNOLOGY

#### Wordpress: Website Administration from Zero to Z

Monday 04, 11, 18/12  
18.00-20.00

(up to 20 participants)

NLG PC ROOM

11

A workshop where participants learn how to build WordPress content, using plugins, choosing templates, and applying Search Engine Optimization (SEO) methods. Also covered is how to keep a website modern, updated, and secure.

**Design-Implementation:**

Katerina Kera, Online Marketing / Foundation

## Activities for adults

### TECHNOLOGY

#### Computer courses for persons 65+

Monday, Wednesday, Friday  
11.00-12.00  
12.30-13.30  
14.00-15.00

Tuesday & Thursday  
11.00-12.00  
14.00-15.00  
18.00-19.00

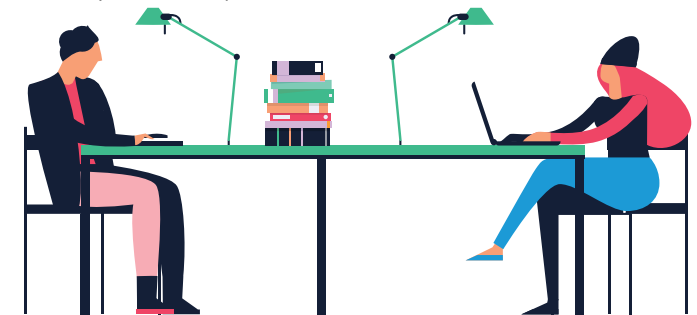
\*new classes begin regularly

(up to 16 participants on a first-come first-served basis)

NLG PC ROOM

11

In a time when technology has become an integral part of our daily lives, SNFCC provides an introductory course in digital skills, intended for users with no previous experience who seek to familiarize themselves with using a computer and learn how to perform basic tasks, such as word processing or web browsing – skills that will enable them to carry out everyday tasks. Using simple and practical learning steps, this course is geared towards novice users aged 65+ as well as everyone wishing to gain a basic mastery of the subject.



#### Introduction to Programming: Playing with Code

Thursday 07, 14, 21, 28/12 & 04/01  
18.00-20.00

(up to 20 participants)

NLG PC ROOM

11

A workshop about programming and how coding has improved our everyday life. Through hands-on practice, we explore how software works by creating a simple algorithm. This game will help us understand in more detail how we can go about writing a program ourselves, expanding our skills and teaching us how to think methodically in dealing with everyday problems.

\*Computer skills not required.

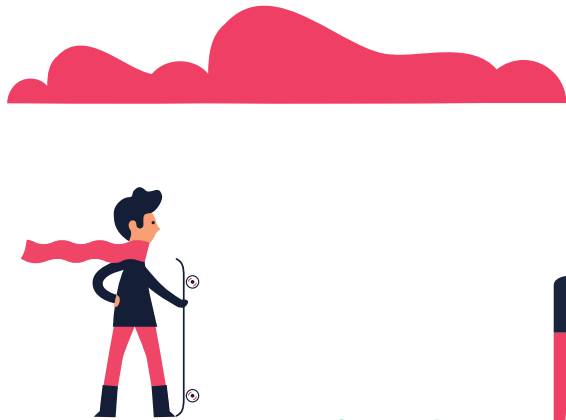
**Design-Implementation:**

Apostolis Lianos, Online Marketing / Foundation



# SNFCC KIDS

## SPORTS & WELLNESS



### Yoga for Kids

Saturday 02, 09, 16,  
23/12 & 06/01  
11.30-12.30

LABYRINTH

4

Yoga is a fun way for children to develop important skills in a competition-free environment. A child-centered, play-based approach, focusing, not on perfect execution, but on teaching children how to control their bodies, breathing and thinking, and how to relax even as they gain strength, flexibility and self-confidence.

**Design-Implementation:** Regeneration & Progress



Saturday 02, 09, 16,  
23/12  
10.30-12.00

For children aged 4-9  
and their parents

(up to 50 participants)

GREAT LAWN

1

### Family Games

An entertaining activity that's all the rage, with games specially designed for both young and old. Parents are encouraged to play and collaborate with their children in the Park, sharing their educational stimuli and developing their imagination.

**Design-Implementation:** Regeneration & Progress



# SNFCC KIDS

## SPORTS & WELLNESS



### Discovering the World

Saturday 02, 16/12  
& 06/01  
12.30-14.30

For children aged 3-5  
(up to 30 participants)

GREAT LAWN

1

Through fun games encouraging teamwork and imagination, our very young friends will experience basic body movements and learn how to balance and socialize. Discovering their bodies and feelings, they will gradually discover the world around them.

**Design-Implementation:** Regeneration & Progress



Saturday 09/12  
Sunday 10/12  
12.00-14.00

Saturday 06/01  
Sunday 07/01  
12.00-14.00

For children aged 5-12  
(up to 15 participants)

AGORA

12

### Roller Skating for Kids

Recreation, exercise, or transport? Skates are all of these at the same time! See for yourself and practice your balance in these self-contained introductory classes.

\*No prior experience is required. Participants must bring their own equipment (skate, helmet, knee pads).

**Design-Implementation:** powerskate.eu skate academy/  
Yannis Kousparis, certified instructor





## SNFCC KIDS NATURE



**Saturday 02, 09, 16,  
23, 30/12 & 06/01**  
11.30-13.00

For children aged 6-12  
(up to 30 participants)

**SOUTHERN WALKS**

3

### Art Land: Discover the seasons through Art

A children's workshop inspired by the works of Greek and international artists. This month, participants draw inspiration from the paintings of Pablo Picasso. After discussing this great artist's works, children receive gardening materials and leaves and set off to create their own artworks! When artworks are completed, participants are photographed with their creations, which remain out there in nature!

**Design-Implementation:** M-art



**Sunday 03, 10,  
17/12, 07/01**  
10.30-12.00

For children aged 5-9  
(up to 20 participants)

**VEGETABLE GARDEN**

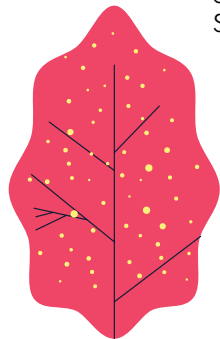
20

### The Park's Little Gardeners

In December, nature is resting, plants don't grow, and insects withdraw until spring comes. The Park's little gardeners take action this month, too, learning to prune, compost plant remains, build nests for birds, and, as always, take care of the Vegetable Garden in an exciting journey of exploration and discovery in the Park!

#### **Design-Implementation:**

Stavroula Katsoyanni, Agronomist – Landscape Architect Msc  
Stamatis Kavassilis, Agronomist – Soil Specialist



## SNFCC KIDS SCIENCE



**Wednesday 03/01  
Friday 05/01**  
17.30-18.30

For children aged 4-5

(up to 20 participants  
by pre-registration  
at snfcc.org)

**NLG KIDS LAB**

11

### Little Engineers

Our young scientists make their first steps in the world of science, technology, and engineering, cultivating skills such as their power of observation, imagination, and ingenuity. Participating in the construction of a spinning top, children explore concepts and phenomena, building constructions, observing, making inferences about the world, and finding solutions to specific problems.

**Design-Implementation:** Stem



## SNFCC KIDS ARTS & CRAFTS



**Saturday 02, 09/12**  
17.00-18.00  
18.00-19.00  
19.00-20.00

For children of all ages  
and their parents

(up to 30 participants  
per session)

**NLG KIDS LAB**

11

### Mistakes Labs: Fire Flowers

An opportunity for creative mistakes! Encounters with art, where mistakes are allowed, the eraser is gone, lines do not restrict, and imagination is the name of the game!

This month, we explore the element of fire, comparing its shape with the inner structure of a flower. We are inspired in making our own fire-like flowers by American artist Georgia O'Keeffe's *Red Lilies* and Dutch artist Vincent van Gogh's *Yellow Sunflowers*.

**Design-Implementation:** Christina Tsinisizeli, Artist

BALLET

Pontus Lidberg / Patrick Kinmonth / Pyotr Ilyich Tchaikovsky

## Sleeping Beauty

Conductors: **Andreas Tselikas - Elias Voudouris**  
A creation by **Pontus Lidberg** and **Patrick Kinmonth**

With the **Orchestra, Principal Dancers, Soloists, Demi-Soloists** and the **Corps de Ballet** of the **Greek National Opera**

Sponsor **Alpha Bank**

With a new impressive production opens the season of the GNO Ballet. From November 26th to December 31th 2017, Tchaikovsky's *Sleeping Beauty* takes the spectator to the world of fairytales, nature and fantasy, through the choreography of the renowned Swedish choreographer Pontus Lidberg and Patrick Kinmonth's inspired sets and costumes.

ITALIAN OPERA CYCLE / TRIBUTE TO STEFANOS LAZARIDIS

**Giacomo Puccini**

## La Bohème

Conductor: **Elias Voudouris - Vladimiros Symeonidis**  
Director: **Graham Vick**

With the **Orchestra, Chorus, Children's Chorus** and **Soloists** of the **Greek National Opera**

Sponsor **National Bank of Greece**

Accepting the invitation from the Greek National Opera's then artistic Director, Stefanos Lazaridis, back in 2007 the famed British director Graham Vick devised a version of *La Bohème* set in modern-day Athens, transporting Puccini's beloved opera from 19th century Paris to 21st century Exarchia. The faces of the four ambitious young artists and their camaraderie are known to all. Their problems, concerns, jokes were run of the mill back then; they remain so even today. Rodolfo's ill-fated love for Mimi assumes an unexpected tragic dimension given that their tale could be played out in the apartment right next door; right among us.

03, 15, 16, 22,  
23, 29, 31/12  
20.00  
(on 31/12 at 19.00)

GNO STAVROS  
NIARCHOS HALL

13



07, 08, 13, 17, 20,  
24, 27, 30/12  
20.00

GNO STAVROS  
NIARCHOS HALL

13

01, 06, 07, 08, 09, 10,  
13, 14, 15, 16/12  
20.30

GNO  
ALTERNATIVE  
STAGE

13

02, 03/12  
20.30

GNO  
ALTERNATIVE  
STAGE

13

MUSIC THEATER

Michail Marmarinos / Philippos Tsalahouris

## Yökihi

Co-production with Theseum ensemble

Director-dramaturgy: **Michail Marmarinos**

Music: **Philippos Tsalahouris**

A work of the Theater Noh Japanese tradition with Greek actors presented by Michail Marmarinos at the GNO Alternative Stage, with music by Philippos Tsalahours. The performance *Yökihi* (Song of the everlasting sorrow) retains the structure, stage conventions and complete look and feel of a Noh performance, but is not designed to imitate the genre. The story goes that the lovely princess Yökihi lost her life and China's emperor Genso tasks a sorcerer with finding the place where her spirit rests.

CONCERT

Manos Hadjidakis

## Piano works

Soloists: **Stefanos Thomopoulos, Thodoris Tzovanakis, Petros Magoulas**

The three-year Manos Hadjidakis Cycle opens at the GNO Alternative Stage with the presentation of important piano works written by the legendary Greek composer. On December 2, the following works will be presented: *Ionian Suite, Rome 1970, For a little white seashell, Erimia, The accursed snake*, while on December 3, the works: *For a little white seashell, Five Piano Improvisations, Rhythmology, Six folk paintings, The accursed snake*.

CHILDREN'S OPERA

**Thodoris Abazis**

**Prince Ivan and the Firebird**

03, 05, 06, 10, 17, 23,  
24, 30, 31/12  
11.00

GNO  
ALTERNATIVE  
STAGE

13



Premiere / Commissioned by the GNO

Composer-director: **Thodoris Abazis**

Conductor: **Michalis Papapetrou**

Libretto: **Sofianna Theofanous**

Sponsor **Hellenic Petroleum**

Children's opera *Prince Ivan and the Firebird* is an ideal introduction to the world of opera. The work is based on a well-known traditional Russian tale which was also the inspiration for Igor Stravinsky's famous ballet and is aimed at children aged 5 to 12. The story tells of the firebird, a beautiful big bird with magical powers and lavish scarlet plumage. But whoever tries to catch it, gets into trouble.

COMIC OPERA

**Gilbert and Sullivan**

**The Mikado**

21, 22, 23, 24, 27, 28,  
29, 30/12 2017  
20.30

GNO  
ALTERNATIVE  
STAGE

13

Co-production with the "Rafi" music theater company

Orchestration-conductor: **Michalis Papapetrou**

Director: **Akyllas Karazisis**

Sponsor **DIOR**

The hilarious exotic comic opera *The Mikado* (1885), one of the most popular theater works of all times, is presented for the first time in Greek. William Schwenck Gilbert and Arthur Sullivan, leading lights in the field of English comic opera and forerunners of the Marx Brothers and Monty Python, were inspired by the atmospheric Far East, and composed this acerbic satire on the socio-political mores of the 19th century.

OPERA

**40<sup>th</sup> Maria Callas International Grand Prix**

3-10 December 2017 GNO - SNFCC

The Athenaeum International Art Center, in collaboration with the Greek National Opera at the Stavros Niarchos Foundation Cultural Center invite the music lovers to attend the two selection rounds and the finals of the *40th Maria Callas International Grand Prix - Opera*, where young artists will compete for the "Grand Prix".

1<sup>st</sup> Round:

**Sunday 03, Monday 04 & Tuesday 5 December 2017, 14:30**

2<sup>nd</sup> Round:

**Thursday 07 & Friday 08/12 2017, 15:00**

Greek National Opera - Stavros Niarchos Foundation Cultural Center, Orchestra Rehearsal Hall

\*Free admission for pass holders which will be distributed one hour before the starting time of the competition at the GNO Box Office (for information: 210 32 11 949 & 210 32 11 955)

3<sup>rd</sup> Round: Finals and Award Ceremony

**Sunday 10 December 2017, 19:00**

Greek National Opera - Stavros Niarchos Foundation Cultural Center, Stavros Niarchos Hall

**Tickets: €10 & €20**

With the Greek National Opera Orchestra conducted by **Loukas Karytinou**



## Dancing my own dance

07/12  
and every Thursday  
18.00

**GNO BALLET  
REHEARSAL  
STUDIOS - SNFCC**

13

No prior dance  
experience required

Participation is free  
of charge

**Information-  
registrations:**  
213 088 5753,  
6972 101140 &  
ekarterou@nationalopera.gr

Movement workshop for individuals with  
motor-sensory disabilities and the non-disabled

Design-Implementation: **Bulerinas dance group**

The GNO Alternative Stage and the Educational & Social  
Activities present the movement workshop "Dancing my  
own dance", aimed at individuals with motor-sensory  
disabilities and the non-disabled. The workshop explores  
the relationship between the individual and physicality, and  
the boundaries of the two.



## Intercultural Choir

04/12  
and every Monday  
18.00-20.00

**MEETING POINT  
AT GNO BOX  
OFFICES AT 17.45**

For adult refugees,  
migrants and other  
foreigners.

No prior musical  
knowledge or  
experience required

Participation is free  
of charge

**Information-registrations:**  
education@nationalopera.gr

Choirmaster: **Vasoula Delli**

With the involvement and support of the  
GNO Educational & Social Activities Department

The GNO Alternative Stage's Intercultural Choir was  
founded in 2017 as part of the GNO Educational and  
Social Activities programme, to bring permanent and  
temporary residents of Athens (refugees, migrants and other  
foreigners) together.

This action is being implemented with the support  
of the UNHCR.

## My voice and me / My voice and you

**Sunday 10/12**  
10.00-10.45  
for parents/guardians  
of children aged 0-3  
  
11.00-11.45  
for parents/guardians  
of children aged 3-6

Max. number of  
participants per  
workshop:  
15 parents/children.

**Information/  
registrations:**  
213 088 5742

Free - a first come first  
served policy applies

Educational workshop for families with children's songs and lullabies  
that aims to familiarize children with group singing and movement.

Design-Implementation: **Konstantina Pitsiakou**  
(conductor/soloist/music instructor)

As part of the Sunday Mornings series of events the GNO  
Alternative Stage is launching a series of educational  
workshops/meetings focused on song as a medium for  
expression and aid to communication. The workshop will  
explore lullabies, children's songs, traditional songs from  
Greece and other countries, European canons and madrigals.

## Getting to know opera and ballet La Bohème

**Saturday 16/12**  
**Sunday 17/12**  
11.00-14.00

The workshop will last 2  
days and consists of two  
sessions.

Max. no. of  
participants: 20  
participants

**Information/  
registrations:**  
213 088 5742

Free - a first come first  
served policy applies

Educational workshops that utilise the GNO opera and ballet  
productions as a source of creative inspiration and starting point  
for exploration. The workshop is open to actors and soloists, inspired  
by the GNO production of *La Bohème* (Stavros Niarchos Hall).

Designed/implemented by: **Kalliopi Simou** (actor/dancer),  
**Dina Strani** (theatrolgist/soloist)

Inspired by Puccini's *La Bohème*, the workshop invites actors to  
discover their voice and singing as a musical interpretation tool,  
and soloists to use their body as a stage interpretation tool in the  
lyrical theater.

20/12-15/01

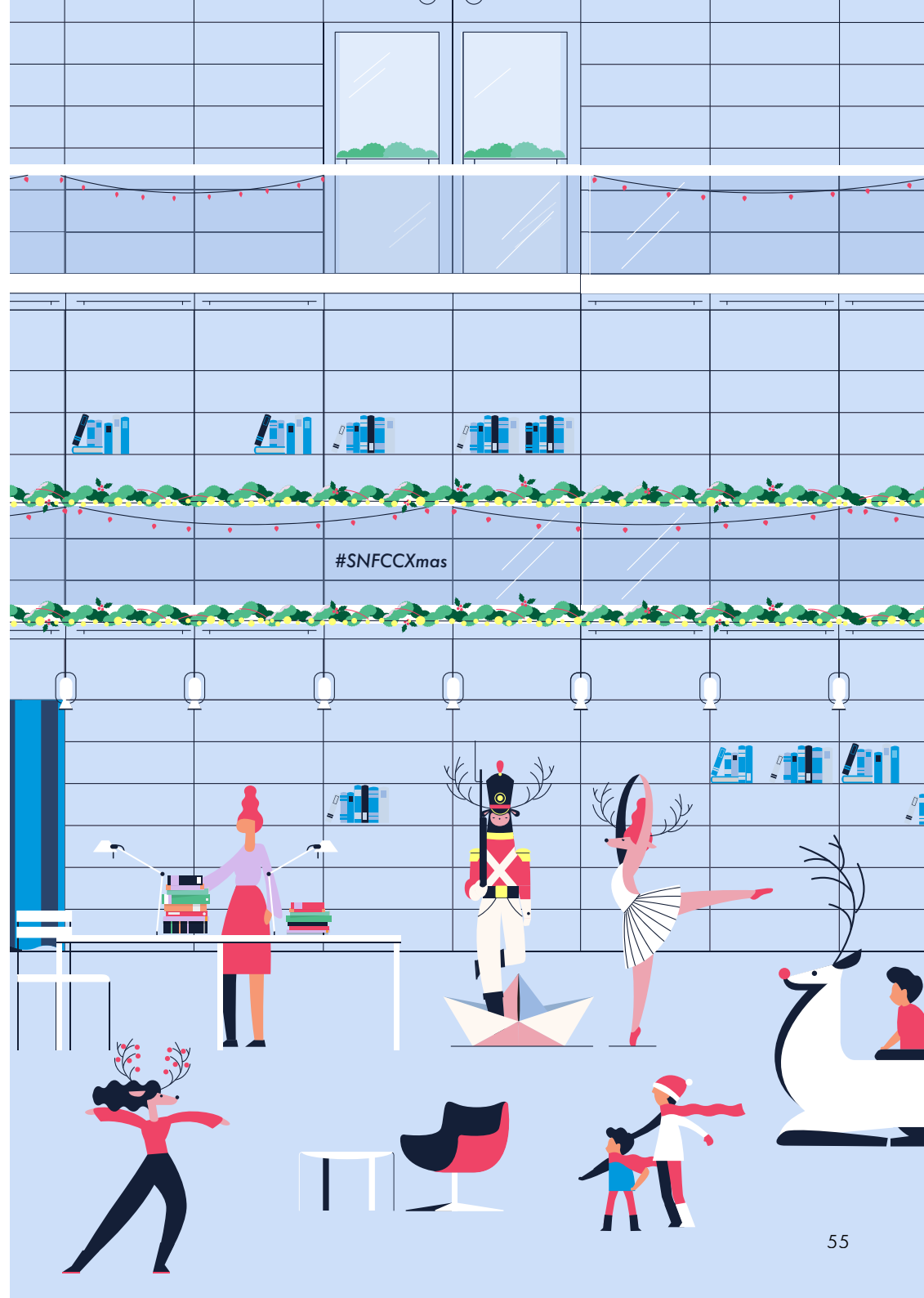
NLG BOOK CASTLE

11

## A Christmas Story for the National Library

This Christmas, the children of the Greek Libraries Network offer us their words, writings, and paintings. They make stories inspired from the characters, dialogues, descriptions, and images in their favorite books.

Writing a new story, children follow the traces of Santa Claus and goblins, wizards and star-children who sneak inside us this time every year, animating our dreams. These children enable us to hope that in the new year the National Library may be full of people reading, studying, researching, enjoying, watching, keeping up to date. Read illustrated stories by children from all around Greece on the Book Castle shelves: It is a promise for the new year!



## Exhibitions

# Yannis Bechrakis

Monday-Sunday  
06.00-00.00

NLG 2nd FLOOR

11

Internationally renowned photojournalist Yannis Behrakis is Senior Editor, Special Projects for the Reuters news agency. His photographs have been published in major international media, and he has earned several international awards, including a Pulitzer prize in 2016.

His recent work traces the journey of refugees fleeing their homeland in search of a better life. His lens captures faces, scenes of transit or rest, in-between stops and other snapshots from the painful and often endless journey of refugees in a thought-provoking exhibition at the SNFCC. As we take a closer look at Behrakis's photographs, we realize that the crisis we are experiencing today is predominately humanitarian, and one that Behrakis records in a unique manner.

# Spyros Louis Cup

Monday-Sunday  
06.00-00.00

SNFCC LOBBY

18

Conceived and designed by Michel Bréal for the champion of the first Marathon race – the Greek runner Spyros Louis – the Silver Cup was awarded at the first modern Olympic Games in Athens in 1896; today, it is on permanent display at the SNFCC. This historic item was acquired by the Stavros Niarchos Foundation when it became available for sale by the runner's grandson at Christie's. As soon as the Cup was acquired, SNF committed to making it accessible to the public, keeping it permanently on display at the SNFCC. Until then, over 3.5 million visitors had already admired the Cup when it was displayed at the Acropolis Museum in Athens and at the Olympic Museum in Lausanne.



# Guided tours

*\* To find out more information, see the guided tours schedule and pre-register, please visit [SNFCC.org/events](http://SNFCC.org/events).*

*\* The guided tours follow a continuous walking route on the SNFCC premises, including the use of stairs and elevators.*

*\* Please note that the Stavros Niarchos Park guided tours are subject to weather conditions.*

Want to know more about SNFCC? We offer daily guided tours of its award-winning building complex, home to the new premises of the Greek National Opera (GNO) and the National Library of Greece (NLG), designed by the Renzo Piano Building Workshop. Discover public areas and go backstage in the two buildings. We will visit the rehearsal spaces, the Stavros Niarchos Hall and the Greek National Opera's Alternative Stage, and stroll through the Library's Public Section, Reading Rooms and Vaults.

Guided tours of the Stavros Niarchos Park are also conducted daily. An example of state-of-the-art landscape architecture, the city's new Park is designed according to sustainability principles, with respect for the ecosystem and the challenges of an ever-changing environment. A welcoming, open space, whose vegetation and overall design capture the essence of the Mediterranean landscape, it is open for visits daily.

## Guided Tours for Groups associations, organizations and NGOs.

Guided tours for groups are available for educational associations, cultural organizations, NGOs and other entities. To book a guided tour for your group, please call (+30) 216 8091004, or email [tours@snfcc.org](mailto:tours@snfcc.org). Guided tours are available for groups between 12-25 persons.



# SNFCC KIDS



## School Visits

SNFCC welcomes primary and secondary school groups to its educational events.

Visits are held Monday through Friday 09.00-10.30 and 11.00-12.30.

Reserve your group online at [SNFCC.org](http://SNFCC.org). For more information, please call (+30) 216 8091005 or email [schools@snfcc.org](mailto:schools@snfcc.org).



# Holiday shopping at the SNFCC!



The SNFCC Store opened last summer, offering a wide and constantly updating range of products and gifts. Handmade creations, unique items by Greek designers, books, objects related to SNFCC, the Stavros Niarchos Park, the National Library of Greece, the Greek National Opera, and more, are available. Naturally, especially for the holiday season, good luck charms, calendars, and agendas for the new year, Christmas decorations and other seasonal items await everyone, big or small, at the SNFCC Store. If you are a SNFCC member, don't forget that you can benefit from our 10% discount!





# Christmas treats at the SNFCC!



Melomakarona, kourabiedes, hot chocolate, fabulous Christmas cakes, steaming-hot soup, and many other festive treats and goodies await visitors at Stavros Niarchos Foundation Cultural Center's food points. From a hot drink and a snack before ice skating or after a walk in the Stavros Niarchos Park to a complete hot meal, there is something for everyone! If you are a SNFCC member, don't forget to benefit from your exclusive 10% discount!

## Pharos Café Ψ4A

Set at SNFCC's highest vantage point, on the days when the Lighthouse rests between exhibitions and events Pharos Café undertakes to offer SNFCC's visitors unique choices of beverages, drinks and cold dishes, to be enjoyed along with the splendid view.

Opening hours: 09.00-00.00 daily

\*Operating hours subject to change when the Lighthouse is hosting events

## Agora Bistro Ψ4B

Agora Bistro is the all-day focal point of SNFCC's Agora, where visitors can enjoy everything from breakfast to dinner through a variety of Mediterranean flavors for all tastes.

Opening hours: 08.00-00.00 daily



## Coffee & Juice Vans on tour Ψ4C

Strollers along the Channel can find tricycles for coffee and refreshing juices to take away at the start of the SNFCC Agora.

Opening hours:

Coffee Van 09.00-21.00 daily

Juice Van 09.00-21.00 daily

## Canal Café Ψ4D

The new proposition by the creative team behind Skoufa Street's IT and the chef Andreas Lagou invites visitors to enjoy healthy gastronomy from morning to evening in a stylish minimalist venue overlooking the Canal.

Opening hours: 09.00-00.00 daily



## Park Kiosk Ψ4E

Park Kiosk offers refreshing juices, coffee, and a variety of tasty snacks to visitors enjoying the green at the Stavros Niarchos Park, or family moments by SNFCC's Children's Playgrounds.

Opening hours: 08.00-20.00 daily

*\*Pre-registration at [snfcc.org/events](http://snfcc.org/events)  
Every Tuesday begins the pre-registration for the events of next week.  
You can find the specific date of pre-registration for each event  
at [snfcc.org/events](http://snfcc.org/events).*

● Highlights

● SNFCC Christmas World

● Activities for adults

## Permanent Events

Exhibitions	<b>Yannis Bechrakis</b> (p. 56)	06.00-00.00	NLG 2nd FLOOR
Exhibitions	<b>Spyros Louis Cup</b> (p. 57)	06.00-00.00	SNFCC LOBBY
Tours	<b>Guided tours at Park &amp; SNFCC</b> (p. 58)	06.00-00.00	VISITORS CENTER & NLG LOBBY
Educational Programs	<b>School Visits</b> (p. 59)	Monday-Friday 09.00-10.30 11.00-12.30	
SNFCC Xmas	<b>Ice Rink*</b> (p. 03)	10.00-22.00	CANAL

## Friday 01/12

Sports & Wellness	<b>Mat Pilates</b> (p. 38)	07.45-09.00	GREAT LAWN
Technology	<b>Computer Courses</b> for persons 65+ (p. 43)	11.00-12.00 12.30-13.30 14.00-15.00	NLG PC ROOM
Sports & Wellness	<b>Yoga in the Park</b> (p. 39)	18.00-19.30	GREAT LAWN
SNFCC Xmas	<b>Electricity Labs: The blinking Christmas tree!</b> children aged 8-13 (p. 24)	18.30-20.30	NLG KIDS LAB
Sports & Wellness	<b>Fitness for everyone</b> (p. 38)	18.30-21.30	RUNNING TRACK
SNFCC Xmas	<b>Ice Rink Opening Event</b> (p. 03)	18.30	AGORA

## Saturday 02/12

Sports & Wellness	<b>Tai Chi</b> (p. 40)	08.30-09.45	GREAT LAWN
Sports & Wellness	<b>SNFCC Running Team</b> (p. 36)	08.30-10.00	RUNNING TRACK
Nature	<b>The Green Fingers</b> (p. 41)	10.30-12.00	VEGETABLE GARDEN
Sports & Wellness	<b>Family Games</b> children aged 4-9 and parents (p. 44)	10.30-12.00	GREAT LAWN
SNFCC Xmas	<b>Family Adventure Park</b> ages 4-65 (p. 25)	11.00-13.00	GREAT LAWN

## Saturday 02/12

Nature	<b>Art Land</b> aged 6-12 (p. 46)	11.30-13.00	SOUTHERN WALKS
Sports & Wellness	<b>Yoga for Kids</b> (p. 44)	11.30-12.30	LABYRINTH
Sports & Wellness	<b>Discovering the World</b> aged 3-5 (p. 45)	12.30-14.30	GREAT LAWN
Arts & Crafts	<b>Mistakes Labs: Fire flowers!</b> children and parents (p. 47)	17.00-18.00 18.00-19.00 19.00-20.00	NLG KIDS LAB

## Sunday 03/12

Nature	<b>The Park's Little Gardeners</b> aged 5-9 (p. 46)	10.30-12.00	VEGETABLE GARDEN
Sports & Wellness	<b>Petanque</b> (p. 37)	11.00-13.00	ESPLANADE
SNFCC Xmas	<b>Picnic with Santa Claus and artists from all around the world</b> children 4+ and parents (p. 26)	11.00-13.30	GREAT LAWN
Dancing	<b>On Display Global</b> (p. 22)	18.30	NLG LOBBY

## Monday 04/12

Sports & Wellness	<b>Mat Pilates</b> (p. 38)	07.45-09.00	GREAT LAWN
Technology	<b>Computer Courses</b> for persons 65+ (p. 43)	11.00-12.00 12.30-13.30 14.00-15.00	NLG PC ROOM
Sports & Wellness	<b>Yoga in the Park</b> (p. 39)	18.00-19.30	GREAT LAWN
Technology	<b>Wordpress</b> (p. 42)	18.00-20.00	NLG PC ROOM
Nature	<b>Gardening: advanced section</b> (p. 41)	18.30-20.30	NLG BOOK CASTLE
Sports & Wellness	<b>Fitness for everyone</b> (p. 38)	18.30-21.30	RUNNING TRACK
SNFCC Xmas	<b>Christmas ornaments*</b> adults (p. 26)	19.00-21.00	NLG KIDS LAB

*\*Pre-registration at [snfcc.org/events](http://snfcc.org/events)  
 Every Tuesday begins the pre-registration for the events of next week.  
 You can find the specific date of pre-registration for each event  
 at [snfcc.org/events](http://snfcc.org/events).*

## Tuesday 05/12

Sports & Wellness	Yoga in the Park (p. 39)	08.00-09.30	GREAT LAWN
Technology	Computer Courses for persons 65+ (p. 43)	11.00-12.00 14.00-15.00 18.00-19.00	NLG PC ROOM
Nature	The Green Fingers (p. 41)	11.00-12.30	VEGETABLE GARDEN
Sports & Wellness	Tai Chi (p. 40)	16.30-17.45	PINE GROVE
Ideas Labs	Workshops for those who forget a little or a lot! 50+ (p. 42)	18.00-20.00	NLG MULTIFUNCTIONAL ROOM
Sports & Wellness	Fitness for everyone (p. 38)	18.30-21.30	RUNNING TRACK
Ideas Labs	Five pages of pre-socratic philosophy: Parmenides (p. 23)	19.00-21.00	NLG BOOK CASTLE

## Wednesday 06/12

Sports & Wellness	Mat Pilates (p. 38)	07.45-09.00 18.00-19.00	GREAT LAWN
Sports & Wellness	Qigong 50+ (p. 39)	09.00-10.15	LABYRINTH
Technology	Computer Courses for persons 65+ (p. 43)	11.00-12.00 12.30-13.30 14.00-15.00	NLG PC ROOM
SNFCC Xmas	Trial Labs: Pomegranates for a lucky New Year! adults (p. 27)	18.00-19.30 19.30-21.00	NLG KIDS LAB
Sports & Wellness	Fitness for everyone (p. 38)	18.30-21.30	RUNNING TRACK

## Thursday 07/12

Sports & Wellness	Yoga in the Park (p. 39)	08.00-09.30	GREAT LAWN
Sports & Wellness	Qigong 50+ (p. 39)	09.00-10.15	LABYRINTH
Technology	Computer Courses for persons 65+ (p. 43)	11.00-12.00 14.00-15.00 18.00-19.00	NLG PC ROOM
SNFCC Xmas	Christmas art-making* children aged 1-3 and parents (p. 27)	17.30-18.15	NLG KIDS LAB
Sports & Wellness	Mat Pilates (p. 38)	18.00-19.00	GREAT LAWN

● Highlights

● SNFCC Christmas World

● Activities for adults

● SNFCC Kids 

## Thursday 07/12

Technology	Introduction to Programming (p. 43)	18.00-20.00	NLG PC ROOM
Sports & Wellness	Fitness for everyone (p. 38)	18.30-21.30	RUNNING TRACK

## Friday 08/12

Sports & Wellness	Mat Pilates (p. 38)	07.45-09.00	GREAT LAWN
Technology	Computer Courses for persons 65+ (p. 43)	11.00-12.00 12.30-13.30 14.00-15.00	NLG PC ROOM
Sports & Wellness	Yoga in the Park (p. 39)	18.00-19.30	GREAT LAWN
SNFCC Xmas	Electricity Labs: The blinking Christmas tree! children aged 8-13 (p. 24)	18.30-20.30	NLG KIDS LAB
Sports & Wellness	Fitness for everyone (p. 38)	18.30-21.30	RUNNING TRACK

## Saturday 09/12

Sports & Wellness	Tai Chi (p. 40)	08.30-09.45	GREAT LAWN
Sports & Wellness	SNFCC Running Team (p. 36)	08.30-10.00	RUNNING TRACK
Sports & Wellness	Sailing the Canal* (p. 36)	09.00-10.00 (aged 6-9) 10.00-11.00 (aged 9-12) 12.00-13.00 (aged 12-17) 11.00-12.00 & 13.00-14.00 (17+ and adults)	CANAL
Sports & Wellness	Family Games children aged 4-9 and parents (p. 44)	10.30-12.00	GREAT LAWN
Nature	The Green Fingers (p. 41)	10.30-12.00	VEGETABLE GARDEN
Sports & Wellness	Yoga for Kids (p. 44)	11.30-12.30	LABYRINTH
Nature	Art Land aged 6-12 (p. 46)	11.30-13.00	SOUTHERN WALKS
Sports & Wellness	Roller Skating for Kids aged 5-12 (p. 45)	12.00-14.00	VISITORS CENTER
Sports & Wellness	Kayaking the Canal* 12+ and adults (p. 37)	14.30-17.00	CANAL
Arts & Crafts	Mistakes Labs: Fire flowers! children and parents (p. 47)	17.00-18.00 18.00-19.00 19.00-20.00	NLG KIDS LAB

*\*Pre-registration at [snfcc.org/events](http://snfcc.org/events)  
Every Tuesday begins the pre-registration for the events of next week.  
You can find the specific date of pre-registration for each event  
at [snfcc.org/events](http://snfcc.org/events).*

## Sunday 10/12

Sports & Wellness	<b>Sailing the Canal*</b> (p. 36)	09.00-10.00 (aged 6-9) 10.00-11.00 (aged 9-12) 12.00-13.00 (aged 12-17) 11.00-12.00 & 13.00-14.00 (17+ and adults)	CANAL
Nature	<b>The Park's Little Gardeners</b> aged 5-9 (p. 46)	10.30-12.00	VEGETABLE GARDEN
Sports & Wellness	<b>Petanque</b> (p. 37)	11.00-13.00	ESPLANADE
SNFCC Xmas	<b>Picnic with Santa Claus and artists from all around the world</b> children 4+ and parents (p. 26)	11.00-13.30	GREAT LAWN
SNFCC Xmas	<b>Print your own wish</b> children and adults (p. 27)	11.30-14.30	PARK KIOSK
Sports & Wellness	<b>Roller Skating for Kids</b> aged 5-12 (p. 45)	12.00-14.00	VISITORS CENTER
Sports & Wellness	<b>Kayaking the Canal*</b> 12+ and adults (p. 37)	14.30-17.00	CANAL
Parabases	<b>Days of '25-'30</b> (p. 21)	16.00-17.30	LIGHTHOUSE

## Monday 11/12

Sports & Wellness	<b>Mat Pilates</b> (p. 38)	07.45-09.00	GREAT LAWN
Technology	<b>Computer Courses</b> for persons 65+ (p. 43)	11.00-12.00 12.30-13.30 14.00-15.00	NLG PC ROOM
Sports & Wellness	<b>Yoga in the Park</b> (p. 39)	18.00-19.30	GREAT LAWN
Technology	<b>Wordpress</b> (p. 42)	18.00-20.00	NLG PC ROOM
Nature	<b>Gardening: advanced section</b> (p. 41)	18.30-20.30	NLG BOOK CASTLE
Sports & Wellness	<b>Fitness for everyone</b> (p. 38)	18.30-21.30	RUNNING TRACK
SNFCC Xmas	<b>Christmas ornaments*</b> adults (p. 26)	19.00-21.00	NLG KIDS LAB

## Tuesday 12/12

Sports & Wellness	<b>Yoga in the Park</b> (p. 39)	08.00-09.30	GREAT LAWN
Technology	<b>Computer Courses</b> for persons 65+ (p. 43)	11.00-12.00 14.00-15.00 18.00-19.00	NLG PC ROOM

## Tuesday 12/12

Nature	<b>The Green Fingers</b> (p. 41)	11.00-12.30	VEGETABLE GARDEN
Sports & Wellness	<b>Tai Chi</b> (p. 40)	16.30-17.45	GREAT LAWN
Ideas Labs	<b>Workshops for those who forget a little or a lot!</b> 50+ (p. 42)	18.00-20.00	NLG MULTIFUNCTIONAL ROOM
Sports & Wellness	<b>Fitness for everyone</b> (p. 38)	18.30-21.30	RUNNING TRACK
Ideas Labs	<b>Five pages of pre-socratic philosophy: Demokritos</b> (p. 23)	19.00-21.00	LIGHTHOUSE

## Wednesday 13/12

Sports & Wellness	<b>Mat Pilates</b> (p. 38)	07.45-09.00 18.00-19.00	GREAT LAWN
Sports & Wellness	<b>Qigong 50+</b> (p. 39)	09.00-10.15	LABYRINTH
Technology	<b>Computer Courses</b> for persons 65+ (p. 43)	11.00-12.00 12.30-13.30 14.00-15.00	NLG PC ROOM
Sports & Wellness	<b>First-Aid Courses</b> (p. 40)	17.30-19.00 19.00-20.30	NLG MULTIFUNCTIONAL ROOM
SNFCC Xmas	<b>Trial Labs: Pomegranates for a lucky New Year!</b> adults (p. 27)	18.00-19.30 19.30-21.00	NLG KIDS LAB
Sports & Wellness	<b>Fitness for everyone</b> (p. 38)	18.30-21.30	RUNNING TRACK

## Thursday 14/12

Sports & Wellness	<b>Yoga in the Park</b> (p. 39)	08.00-09.30	GREAT LAWN
Sports & Wellness	<b>Qigong 50+</b> (p. 39)	09.00-10.15	LABYRINTH
Technology	<b>Computer Courses</b> for persons 65+ (p. 43)	11.00-12.00 14.00-15.00 18.00-19.00	NLG PC ROOM
SNFCC Xmas	<b>Christmas art-making*</b> children aged 1-3 and parents (p. 27)	17.30-18.15	NLG KIDS LAB
Sports & Wellness	<b>Mat Pilates</b> (p. 38)	18.00-19.00	GREAT LAWN
Technology	<b>Introduction to Programming</b> (p. 42)	18.00-19.00	NLG PC ROOM
Sports & Wellness	<b>Fitness for everyone</b> (p. 38)	18.30-21.30	RUNNING TRACK
SNFCC Xmas	<b>Simon Bolivar Trumpet Ensemble Concert</b> (p. 05)	20.30-21.30	LIGHTHOUSE

*\*Pre-registration at [snfcc.org/events](http://snfcc.org/events)  
 Every Tuesday begins the pre-registration for the events of next week.  
 You can find the specific date of pre-registration for each event  
 at [snfcc.org/events](http://snfcc.org/events).*

● Highlights

● SNFCC Christmas World

● Activities for adults

## Friday 15/12

Sports & Wellness	<b>Mat Pilates</b> (p. 38)	07.45-09.00	GREAT LAWN
Technology	<b>Computer Courses for persons 65+</b> (p. 43)	11.00-12.00 12.30-13.30 14.00-15.00	NLG PC ROOM
Sports & Wellness	<b>Yoga in the Park</b> (p. 39)	18.00-19.30	GREAT LAWN
SNFCC Xmas	<b>The waiting stocking*</b> children aged 4-6 and parents (p. 28)	18.30-20.30	NLG KIDS LAB
Sports & Wellness	<b>Fitness for everyone</b> (p. 38)	18.30-21.30	RUNNING TRACK

## Saturday 16/12

Sports & Wellness	<b>Tai Chi</b> (p. 40)	08.30-09.45	GREAT LAWN
Sports & Wellness	<b>SNFCC Running Team</b> (p. 36)	08.30-10.00	RUNNING TRACK
Sports & Wellness	<b>Sailing the Canal*</b> (p. 36)	09.00-10.00 (aged 6-9) 10.00-11.00 (aged 9-12) 12.00-13.00 (aged 12-17) 11.00-12.00 & 13.00-14.00 (17+ and adults)	CANAL
Sports & Wellness	<b>Family Games children aged 4-9 and parents</b> (p. 44)	10.30-12.00	GREAT LAWN
Nature	<b>The Green Fingers</b> (p. 41)	10.30-12.00	VEGETABLE GARDEN
Sports & Wellness	<b>Yoga for Kids</b> (p. 44)	11.30-12.30	LABYRINTH
Nature	<b>Art Land aged 6-12</b> (p. 46)	11.30-13.00	SOUTHERN WALKS
Sports & Wellness	<b>Discovering the World aged 3-5</b> (p. 45)	12.30-14.30	GREAT LAWN
Sports & Wellness	<b>Kayaking the Canal*</b> 12+ and adults (p. 37)	14.30-17.00	CANAL
SNFCC Xmas	<b>Mistakes Labs: Christmas circle tree!</b> children and parents (p. 28)	17.00-18.00 18.00-19.00 19.00-20.00	NLG KIDS LAB

## Sunday 17/12


Sports & Wellness	<b>Sailing the Canal*</b> (p. 36)	09.00-10.00 (aged 6-9) 10.00-11.00 (aged 9-12) 12.00-13.00 (aged 12-17) 11.00-12.00 & 13.00-14.00 (17+ and adults)	CANAL
Nature	<b>The Park's Little Gardeners aged 5-9</b> (p. 46)	10.30-12.00	VEGETABLE GARDEN
Sports & Wellness	<b>Petanque</b> (p. 37)	11.00-13.00	ESPLANADE
SNFCC Xmas	<b>Picnic with Santa Claus and artists from all around the world children 4+ and parents</b> (p. 26)	11.00-13.30	GREAT LAWN
SNFCC Xmas	<b>Print your own wish children and adults</b> (p. 27)	11.30-14.30	PARK KIOSK
SNFCC Xmas	<b>Simon Bolivar Trumpet Ensemble &amp; El Sistema Greece Concert</b> (p. 05)	13.00	LIGHTHOUSE
Sports & Wellness	<b>Kayaking the Canal*</b> 12+ and adults (p. 37)	14.30-17.00	CANAL

## Monday 18/12

Sports & Wellness	<b>Mat Pilates</b> (p. 38)	07.45-09.00	GREAT LAWN
Technology	<b>Computer Courses for persons 65+</b> (p. 43)	11.00-12.00 12.30-13.30 14.00-15.00	NLG PC ROOM
Sports & Wellness	<b>Yoga in the Park</b> (p. 39)	18.00-19.30	GREAT LAWN
Technology	<b>Wordpress</b> (p. 42)	18.00-20.00	NLG PC ROOM
Technology	<b>Gardening: advanced section</b> (p. 41)	18.30-20.30	NLG BOOK CASTLE
Sports & Wellness	<b>Fitness for everyone</b> (p. 38)	18.30-21.30	RUNNING TRACK
SNFCC Xmas	<b>DIY Christmas tree*</b> 17+ and adults (p. 28)	19.00-21.30	NLG KIDS LAB
SNFCC Xmas	<b>Harry Potter Concert*</b> (p. 07)	19.00	GNO STAVROS NIARCHOS HALL

*\*Pre-registration at [snfcc.org/events](http://snfcc.org/events)  
Every Tuesday begins the pre-registration for the events of next week.  
You can find the specific date of pre-registration for each event  
at [snfcc.org/events](http://snfcc.org/events).*

 Highlights

 SNFCC Christmas World

 Activities for adults

## Tuesday 19/12

Sports & Wellness	Yoga in the Park (p. 39)	08.00-09.30	GREAT LAWN
Nature	The Green Fingers (p. 41)	11.00-12.30	VEGETABLE GARDEN
Technology	Computer Courses for persons 65+ (p. 43)	11.00-12.00 14.00-15.00 18.00-19.00	NLG PC ROOM
Sports & Wellness	Tai Chi (p. 40)	16.30-17.45	PINE GROVE
Ideas Labs	Workshops for those who forget a little or a lot! 50+ (p. 42)	18.00-20.00	NLG MULTIFUNCTIONAL ROOM
Sports & Wellness	Fitness for everyone (p. 38)	18.30-21.30	RUNNING TRACK
Ideas Labs	Five pages of pre-socratic philosophy: Gorgias (p. 23)	19.00-21.00	NLG BOOK CASTLE
SNFCC Xmas	DIY Christmas tree* 17+ and adults (p. 28)	19.00-21.30	NLG KIDS LAB
SNFCC Xmas	Harry Potter Concert* (p. 07)	19.00	GNO STAVROS NIARCHOS HALL

## Wednesday 20/12

Sports & Wellness	Mat Pilates (p. 38)	07.45-09.00 18.00-19.00	GREAT LAWN
Sports & Wellness	Qigong 50+ (p. 39)	09.00-10.15	LABYRINTH
Technology	Computer Courses for persons 65+ (p. 43)	11.00-12.00 12.30-13.30 14.00-15.00	NLG PC ROOM
SNFCC Xmas	Trial Labs: Pomegranates for a lucky New Year! adults (p. 27)	18.00-19.30 19.30-21.00	NLG KIDS LAB
Sports & Wellness	Fitness for everyone (p. 38)	18.30-21.30	RUNNING TRACK
Dialogues	Dialogues, vol. 2* (p. 20)		NLG BOOK CASTLE

## Thursday 21/12


Sports & Wellness	Yoga in the Park (p. 39)	08.00-09.30	GREAT LAWN
Sports & Wellness	Qigong 50+ (p. 39)	09.00-10.15	LABYRINTH
Technology	Computer Courses for persons 65+ (p. 43)	11.00-12.00 14.00-15.00 18.00-19.00	NLG PC ROOM
SNFCC Xmas	Christmas art-making* children aged 1-3 and parents (p. 27)	17.30-18.15	NLG KIDS LAB
Sports & Wellness	Mat Pilates (p. 38)	18.00-19.00	GREAT LAWN
Technology	Introduction to Programming (p. 43)	18.00-20.00	NLG PC ROOM
SNFCC Xmas	Dionysis Savvopoulos: The Iron John* (p. 10-11)	18.00	LIGHTHOUSE
Sports & Wellness	Fitness for everyone (p. 38)	18.30-21.30	RUNNING TRACK

## Friday 22/12

Sports & Wellness	Mat Pilates (p. 38)	07.45-09.00	GREAT LAWN
Technology	Computer Courses for persons 65+ (p. 43)	11.00-12.00 12.30-13.30 14.00-15.00	NLG PC ROOM
SNFCC Xmas	Storytelling: Running wild at the mill* (p. 28)	17.30-19.00	NLG BOOK CASTLE
Sports & Wellness	Yoga in the Park (p. 39)	18.00-19.30	GREAT LAWN
SNFCC Xmas	Dionysis Savvopoulos: The Iron John* (p. 10-11)	18.00	LIGHTHOUSE
SNFCC Xmas	Weaving wishes* children aged 6-8 and parents (p. 28)	18.30-20.30	NLG KIDS LAB
Sports & Wellness	Fitness for everyone (p. 38)	18.30-21.30	RUNNING TRACK

*\*Pre-registration at [snfcc.org/events](http://snfcc.org/events)  
Every Tuesday begins the pre-registration for the events of next week.  
You can find the specific date of pre-registration for each event  
at [snfcc.org/events](http://snfcc.org/events).*

 Highlights

 SNFCC Christmas World

 Activities for adults

## Saturday 23/12

Sports & Wellness	Tai Chi (p. 40)	08.30-09.45	GREAT LAWN
Sports & Wellness	Sailing the Canal* (p. 36)	09.00-10.00 (aged 6-9) 10.00-11.00 (aged 9-12) 12.00-13.00 (aged 12-17) 11.00-12.00 & 13.00-14.00 (17+ and adults)	CANAL
Sports & Wellness	Family Games children aged 4-9 and parents (p. 44)	10.30-12.00	GREAT LAWN
Nature	The Green Fingers (p. 41)	10.30-12.00	VEGETABLE GARDEN
Sports & Wellness	Yoga for Kids (p. 44)	11.30-12.30	LABYRINTH
SNFCC Xmas	Mary Poppins* (p. 13)	11.30	GNO STAVROS NIARCHOS HALL
Nature	Art Land aged 6-12 (p. 46)	11.30-13.00	SOUTHERN WALKS
SNFCC Xmas	Christmas Textile Heroes* children aged 4-7, ideally with their grandmothers (p. 31)	12.00-14.00	NLG KIDS LAB
SNFCC Xmas	Polyphonica, Musica & Camerata Junior Concert (p. 08)	12.00	LIGHTHOUSE
Sports & Wellness	Kayaking the Canal* 12+ and adults (p. 37)	14.30-17.00	CANAL
SNFCC Xmas	Mistakes Labs: Christmas circle tree! children and parents (p. 28)	17.00-18.00 18.00-19.00 19.00-20.00	NLG KIDS LAB

## Sunday 24/12

Sports & Wellness	Sailing the Canal* (p. 36)	09.00-10.00 (aged 6-9) 10.00-11.00 (aged 9-12) 12.00-13.00 (aged 12-17) 11.00-12.00 & 13.00-14.00 (17+ and adults)	CANAL
Sports & Wellness	Petanque (p. 37)	11.00-13.00	ESPLANADE
SNFCC Xmas	Picnic with Santa Claus and artists from all around the world children 4+ and parents (p. 26)	11.00-13.30	GREAT LAWN
SNFCC Xmas	Christmas roads (p. 28)	12.00-13.15	AGORA
Sports & Wellness	Kayaking the Canal* 12+ and adults (p. 37)	14.30-17.00	CANAL

## Sunday 24/12

SNFCC Xmas	Hula Hoop LED Show (p. 32)	17.00-18.30	VISITORS CENTER
SNFCC Xmas	Dionysis Savvopoulos: The Iron John* (p. 10-11)	18.00	LIGHTHOUSE

## Monday 25/12

SNFCC Xmas	Snow White* (p. 14)	11.30	GNO STAVROS NIARCHOS HALL
------------	---------------------	-------	---------------------------

## Tuesday 26/12


Sports & Wellness	Yoga in the Park (p. 39)	08.00-09.30	GREAT LAWN
SNFCC Xmas	Peter Pan* (p. 14)	11.30	GNO STAVROS NIARCHOS HALL
Technology	Computer Courses for persons 65+ (p. 43)	11.00-12.00 14.00-15.00 18.00-19.00	NLG PC ROOM
SNFCC Xmas	Smile, and I'll tell you a story* children 3+ and parents (p. 32)	17.30-19.30	NLG BOOK CASTLE
SNFCC Xmas	Dionysis Savvopoulos: The Iron John* (p. 10-11)	18.00	LIGHTHOUSE

## Wednesday 27/12

Sports & Wellness	Mat Pilates (p. 38)	07.45-09.00 18.00-19.00	GREAT LAWN
Sports & Wellness	Qigong 50+ (p. 39)	09.00-10.15	LABYRINTH
Technology	Computer Courses for persons 65+ (p. 41)	11.00-12.00 12.30-13.30 14.00-15.00	NLG PC ROOM
SNFCC Xmas	Cinderella* (p. 15)	11.30	GNO STAVROS NIARCHOS HALL
SNFCC Xmas	We create art all together (p. 32)	11.30-14.30	NLG KIDS LAB
SNFCC Xmas	Dream Disco Kidz* children aged 4-9 and parents (p. 33)	18.00-20.00	LIGHTHOUSE
Sports & Wellness	Fitness for everyone (p. 38)	18.30-21.30	RUNNING TRACK

*\*Pre-registration at [snfcc.org/events](http://snfcc.org/events)  
Every Tuesday begins the pre-registration for the events of next week.  
You can find the specific date of pre-registration for each event  
at [snfcc.org/events](http://snfcc.org/events).*

 Highlights

 SNFCC Christmas World

 Activities for adults

 SNFCC Kids 

## Thursday 28/12

Sports & Wellness	Yoga in the Park (p. 39)	08.00-09.30	GREAT LAWN
Sports & Wellness	Qigong 50+ (p. 39)	09.00-10.15	LABYRINTH
SNFCC Xmas	Christmas games children aged 5-12 (p. 33)	11.00-13.00	GREAT LAWN
Technology	Computer Courses for persons 65+ (p. 43)	11.00-12.00 14.00-15.00 18.00-19.00	NLG PC ROOM
SNFCC Xmas	Christmas art-making* children aged 1-3 and parents (p. 27)	17.30-18.15	NLG KIDS LAB
Sports & Wellness	Mat Pilates (p. 38)	18.00-19.00	GREAT LAWN
Technology	Introduction to Programming (p. 43)	18.00-20.00	NLG PC ROOM
Sports & Wellness	Fitness for everyone (p. 38)	18.30-21.30	RUNNING TRACK

## Friday 29/12

Sports & Wellness	Mat Pilates (p. 38)	07.45-09.00	GREAT LAWN
SNFCC Xmas	Xmas Walker Race children aged 2,5-5 (p. 34)	11.00-13.00	VISITORS CENTER
Technology	Computer Courses for persons 65+ (p. 43)	11.00-12.00 12.30-13.30 14.00-15.00	NLG PC ROOM
SNFCC Xmas	Holiday boats children 7+, adults and families (p. 34)	12.30-14.30	NLG KIDS LAB
SNFCC Xmas	Storytelling: Running wild at the mill* (p. 28)	17.30-19.00	NLG BOOK CASTLE
Sports & Wellness	Yoga in the Park (p. 39)	18.00-19.30	GREAT LAWN
Sports & Wellness	Fitness for everyone (p. 38)	18.30-21.30	RUNNING TRACK
SNFCC Xmas	Sera Bellos Quartet & White Dale (p. 09)	21.00	LIGHTHOUSE

## Saturday 30/12

Sports & Wellness	Tai Chi (p. 40)	08.30-09.45	GREAT LAWN
Sports & Wellness	Sailing the Canal* (p. 36)	09.00-10.00 (aged 6-9) 10.00-11.00 (aged 9-12) 12.00-13.00 (aged 12-17) 11.00-12.00 & 13.00-14.00 (17+ and adults)	CANAL
Nature	The Green Fingers (p. 37)	10.30-12.00	VEGETABLE GARDEN
SNFCC Xmas	Christmas games children aged 5-12 (p. 29)	11.00-13.00	GREAT LAWN
Nature	Art Land aged 6-12 (p. 42)	11.30-13.00	SOUTHERN WALKS
SNFCC Xmas	Christmas Textile Heroes children aged 4-7, ideally with their grandmothers (p. 27)	12.00-14.00	NLG KIDS LAB
Sports & Wellness	Kayaking the Canal* 12+ and adults (p. 37)	14.30-17.00	CANAL
SNFCC Xmas	Mistakes Labs: Christmas circle tree! children and parents (p. 28)	17.00-18.00 18.00-19.00 19.00-20.00	NLG KIDS LAB


## Sunday 31/12


Sports & Wellness	Sailing the Canal* (p. 36)	09.00-10.00 (aged 6-9) 10.00-11.00 (aged 9-12) 12.00-13.00 (aged 12-17) 11.00-12.00 & 13.00-14.00 (17+ and adults)	CANAL
SNFCC Xmas	Roller Skates Show (p. 35)	11.30-13.30	AGORA
SNFCC Xmas	Christmas roads (p. 28)	13.30-14.45	AGORA
SNFCC Xmas	NYE Party with DJ Gilles Peterson & MC General Rubbish (p. 17)	00.00	AGORA
SNFCC Xmas	2018 First Run* (p. 17)	00.02	ESPLANADE



*\*Pre-registration at [snfcc.org/events](http://snfcc.org/events)  
Every Tuesday begins the pre-registration for the events of next week.  
You can find the specific date of pre-registration for each event  
at [snfcc.org/events](http://snfcc.org/events).*

 Highlights

 SNFCC Christmas World

 Activities for adults

## Monday 01/01

SNFCC Xmas	<b>Vienna Philharmonic*</b> (p. 19)	12.15	GNO STAVROS NIARCHOS HALL
------------	-------------------------------------	-------	---------------------------

## Tuesday 02/01

Sports & Wellness	<b>Yoga in the Park</b> (p. 39)	08.00-09.30	GREAT LAWN
Technology	<b>Computer Courses for persons 65+</b> (p. 43)	11.00-12.00 14.00-15.00 18.00-19.00	NLG PC ROOM
Sports & Wellness	<b>Tai Chi</b> (p. 40)	16.30-17.45	PINE GROVE
SNFCC Xmas	<b>Dionysis Savvopoulos: The Iron John*</b> (p. 10-11)	18.00	LIGHTHOUSE
Ideas Labs	<b>Workshops for those who forget a little or a lot! 50+</b> (p. 42)	18.00-20.00	NLG MULTIFUNCTIONAL ROOM
Sports & Wellness	<b>Fitness for everyone</b> (p. 38)	18.30-21.30	RUNNING TRACK

## Wednesday 03/01

Sports & Wellness	<b>Mat Pilates</b> (p. 38)	07.45-09.00 18.00-19.00	GREAT LAWN
Sports & Wellness	<b>Qigong 50+</b> (p. 39)	09.00-10.15	LABYRINTH
SNFCC Xmas	<b>Christmas games children aged 5-12</b> (p. 33)	11.00-13.00	GREAT LAWN
SNFCC Xmas	<b>Knitted Sculpture* young and future parents</b> (p. 31)	11.00-14.00	NLG BOOK CASTLE
Technology	<b>Computer Courses for persons 65+</b> (p. 43)	11.00-12.00 12.30-13.30 14.00-15.00	NLG PC ROOM
Science	<b>Little Engineers* aged 4-5</b> (p. 47)	17.30-18.30	NLG KIDS LAB
SNFCC Xmas	<b>Dionysis Savvopoulos: The Iron John*</b> (p. 10-11)	18.00	LIGHTHOUSE
Sports & Wellness	<b>Fitness for everyone</b> (p. 38)	18.30-21.30	RUNNING TRACK

## Thursday 04/01

Sports & Wellness	<b>Yoga in the Park</b> (p. 39)	08.00-09.30	GREAT LAWN
Sports & Wellness	<b>Qigong 50+</b> (p. 39)	09.00-10.15	LABYRINTH
SNFCC Xmas	<b>Crochet self-portrait* young and future parents</b> (p. 31)	11.00-14.00	NLG BOOK CASTLE
Technology	<b>Computer Courses for persons 65+</b> (p. 43)	11.00-12.00 14.00-15.00 18.00-19.00	NLG PC ROOM
SNFCC Xmas	<b>Christmas art-making* children aged 1-3 and parents</b> (p. 27)	17.30-18.15	NLG KIDS LAB
SNFCC Xmas	<b>Dionysis Savvopoulos: The Iron John*</b> (p. 10-11)	18.00	LIGHTHOUSE
Sports & Wellness	<b>Mat Pilates</b> (p. 38)	18.00-19.00	GREAT LAWN
Technology	<b>Introduction to Programming</b> (p. 43)	18.00-20.00	NLG PC ROOM
Sports & Wellness	<b>Fitness for everyone</b> (p. 38)	18.30-21.30	RUNNING TRACK

## Friday 05/01

Sports & Wellness	<b>Mat Pilates</b> (p. 38)	07.45-09.00	GREAT LAWN
SNFCC Xmas	<b>Family portraits for 2018 families</b> (p. 35)	11.00-14.00	PINE GROVE
Technology	<b>Computer Courses for persons 65+</b> (p. 43)	11.00-12.00 12.30-13.30 14.00-15.00	NLG PC ROOM
Science	<b>Little Engineers* aged 4-5</b> (p. 47)	17.30-18.30	NLG KIDS LAB
Sports & Wellness	<b>Yoga in the Park</b> (p. 39)	18.00-19.30	GREAT LAWN
Sports & Wellness	<b>Fitness for everyone</b> (p. 38)	18.30-21.30	RUNNING TRACK
SNFCC Xmas	<b>Gumbo Ya Ya ft. Sugahspank!</b> (p. 09)	21.00	LIGHTHOUSE

*\*Pre-registration at [snfcc.org/events](http://snfcc.org/events)  
Every Tuesday begins the pre-registration for the events of next week.  
You can find the specific date of pre-registration for each event  
at [snfcc.org/events](http://snfcc.org/events).*

## Saturday 06/01

Sports & Wellness	Tai Chi (p. 40)	08.30-09.45	GREAT LAWN
Sports & Wellness	SNFCC Running Team ages 15-70 (p. 36)	08.30-10.00	RUNNING TRACK
Sports & Wellness	Sailing the Canal* (p. 36)	09.00-10.00 (aged 6-9) 10.00-11.00 (aged 9-12) 12.00-13.00 (aged 12-17) 11.00-12.00 & 13.00-14.00 (17+ and adults)	CANAL
Nature	The Green Fingers (p. 41)	10.30-12.00	VEGETABLE GARDEN
SNFCC Xmas	Family Adventure Park ages 4-65 (p. 25)	11.00-13.00	GREAT LAWN
Sports & Wellness	Yoga for Kids (p. 44)	11.30-12.30	LABYRINTH
Nature	Art Land aged 6-12 (p. 46)	11.30-13.00	SOUTHERN WALKS
SNFCC Xmas	The Sound of Music* (p. 15)	11.30	GNO STAVROS NIARCHOS HALL
Sports & Wellness	Roller Skating for Kids aged 5-12 (p. 45)	12.00-14.00	VISITORS CENTER
Sports & Wellness	Discovering the World (p. 45)	12.30-14.30	GREAT LAWN
Sports & Wellness	Kayaking the Canal* 12+ and adults (p. 37)	14.30-17.00	CANAL

## Sunday 07/01

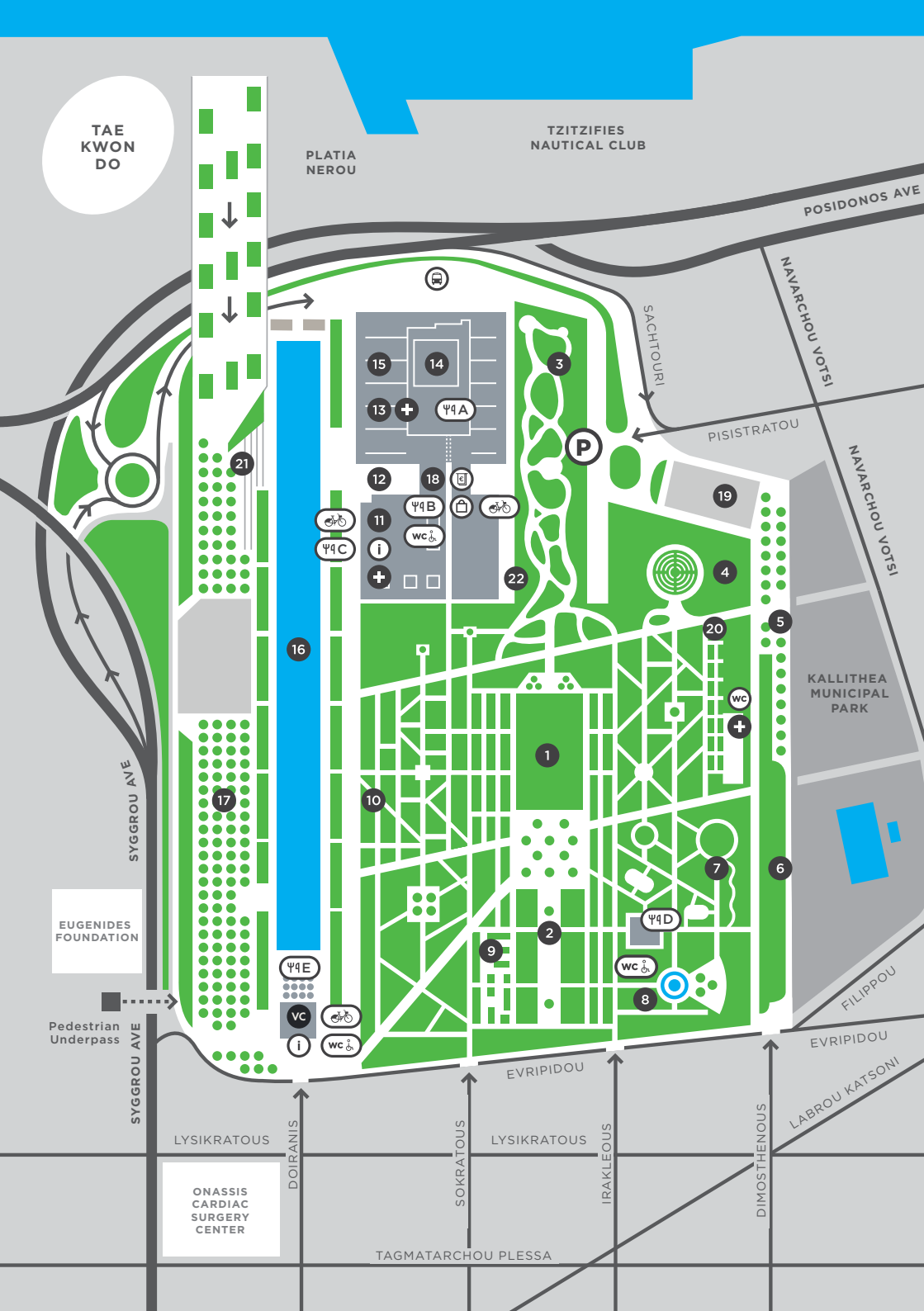
Sports & Wellness	Sailing the Canal* (p. 36)	09.00-10.00 (aged 6-9) 10.00-11.00 (aged 9-12) 12.00-13.00 (aged 12-17) 11.00-12.00 & 13.00-14.00 (17+ and adults)	CANAL
Nature	The Park's Little Gardeners aged 5-9 (p. 46)	10.30-12.00	VEGETABLE GARDEN
Sports & Wellness	Petanque (p. 37)	11.00-13.00	ESPLANADE
SNFCC Xmas	Picnic with Santa Claus and artists from all around the world children 4+ and parents (p. 26)	11.00-13.30	GREAT LAWN
Sports & Wellness	Roller Skating Kids aged 5-12 (p. 45)	12.00-14.00	VISITORS CENTER
Sports & Wellness	Kayaking the Canal* 12+ and adults (p. 37)	14.30-17.00	CANAL
SNFCC Xmas	Hula Hoop LED Show (p. 32)	17.00-18.30	VISITORS CENTER

- The event program is subject to change. Outdoor events may be postponed or cancelled due to weather conditions or construction activity in the Park. Please visit [snfcc.org/events](http://snfcc.org/events) for the latest updates
- If you are taking part in an outdoor activity during the day, you encouraged recommended to wear a hat and bring a mosquito repellent with you.
- For Greek National Opera and National Library of Greece events, please visit their official websites, [www.nationalopera.gr](http://www.nationalopera.gr) and [www.nlg.gr](http://www.nlg.gr) respectively.
- \*Registration required.



Photo Credits:

Photo Credits: Bradley White Dale, D. Cornessiotis | Gumbo Ya Ya, Margarita Nikitaki | Dionysis Savvopoulos, lifemagazine | Yannis Bechrakis, Yannis Bechrakis | Spyros Louis Cup, SNFCC



# Map

Use the corresponding numbers on the map to locate a venue.

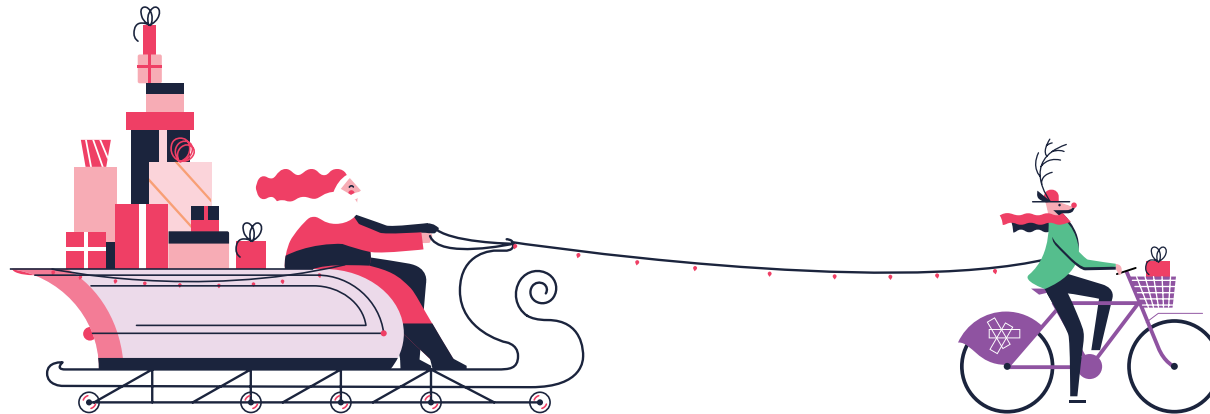
- |                               |                     |
|-------------------------------|---------------------|
| 1 Great Lawn                  | 16 Canal            |
| 2 Pine Grove                  | 17 Esplanade        |
| 3 Southern Walks              | 18 SNFCC Lobby      |
| 4 Labyrinth                   | 19 Bus Parking Lot  |
| 5 Outdoor Gym                 | 20 Vegetable Garden |
| 6 Running Track               | 21 Canal Steps      |
| 7 Playground                  | 22 Buffer Zone      |
| 8 Water Jets                  | vc Visitors Center  |
| 9 Sound Garden                | SNFCC Bike Rental   |
| 10 Mediterranean Garden       | SNFCC Store         |
| 11 National Library of Greece | Shuttle Bus Stop    |
| 12 Agora                      | First Aid           |
| 13 Greek National Opera       | ATM                 |
| 14 Lighthouse                 | Info Point          |
| 15 Panoramic Steps            |                     |

## Food and beverage spots

- Φ4A Pharos Café
- Φ4B Agora Bistro
- Φ4C Coffee & Juice Vans on tour
- Φ4D Park Kiosk
- Φ4E Canal Café



# Access



## Shuttle bus



For convenient access to and from SNFCC, daily transportation by shuttle bus is available to visitors free of charge. A shuttle bus bearing the SNFCC logo departs from Syntagma Square (intersection with Ermou Street), with a stopover at the SyggrouFix Metro station (Syggrou Avenue), and arrives at the SNFCC. For time and route information please visit our website.

### From SYNTAGMA to SNFCC

MONDAY-THURSDAY	FRIDAY	WEEKEND	MONDAY-THURSDAY	FRIDAY	WEEKEND
07.30	07.30	09.30-21.30	12.00	12.30	11.00-00.00
10.00	10.00	every 30 min.	13.00	14.00 - 00.00	every 30 min.
11.00	11.00		14.00	every 30 min.	
15.15	14.30 - 21.30		15.00		
16.15	every 30 min.		15.45		
17.15			16.45		
18.00-20.00			17.30-22.30		
every hour			every hour		

On Sundays, from 10.00 to 13.00, the shuttle bus runs only from Syggrou Fix to the SNFCC and vice versa, due to the scheduled changing of the Presidential Guard in front of the Hellenic Parliament.

In the event of special traffic regulations the schedule of shuttle bus, might be modified accordingly.

## Public Transport

### Buses

- **130: Piraeus – Nea Smyrni**  
(Tzitzifies Stop from Piraeus; Delta Stop to Piraeus)
- **217: Piraeus – Dafni Station**  
(Tzitzifies Stop from Piraeus; Delta Stop to Piraeus)
- **550: Kifissia – Palaio Faliro**  
(Evgenideio Stop, Syggrou Avenue northbound, Onassio Stop southbound)
- **860: Palaio Faliro – Schisto**  
(Tzitzifies Stop from Piraeus; Delta Stop to Piraeus)
- **A1: Piraeus – Voula**  
(Tzitzifies Stop from Piraeus; Delta Stop to Piraeus)
- **B1: Piraeus - Ano Glyfada**  
(Tzitzifies Stop from Piraeus; Delta Stop to Piraeus)
- **B2: Academia – Agios Kosmas**  
(Evgenideio Stop, Syggrou Avenue northbound, Onasseio Stop southbound)

### Trolleybus

- **10: Chalandri - Tzitzifies**  
(Epaminonda Stop)

### Tram

- **Tzitzifies Stop**

## Parking



The official operation of the parking space commenced on 20/09 with respective charges.

### Pricelist:

#### Cars

00.00-19.00: € 1.50 / hour  
 19.00-00.00: € 1.50 / hour with a maximum charge of € 5  
 Monthly offer  
 07.00-19.00 Monday-Friday: € 100 / month

#### Motorcycles

€0.70/hour

**SNFCC members enjoy a 10% discount**



## Useful Info

### Opening hours

Winter opening hours (1 November to 31 March):

- Stavros Niarchos Park, Running Track, Agora, Lighthouse 06.00-20.00
- Visitors Center 09.00-22.00

### Admission

Admission to all events is free of charge thanks to an exclusive grant from the Stavros Niarchos Foundation. Pre-registration is required for some events due to limited seating.

### Accessibility



The Stavros Niarchos Foundation Cultural Center is fully accessible to all.

- All entrances, lifts and the Running Track area are accessible to mobility-impaired persons.
- SNFCC provides parking spaces for mobility-impaired persons on the ground floor of the car park building, as well as wheelchairs for moving inside buildings.
- Wheelchair-accessible restrooms are located at the Visitors Center, the Park Kiosk and the Agora.
- Guide strips are available on all pathways leading to SNFCC premises and Stavros Niarchos Park.
- Guide dogs and hearing dogs are welcome in all SNFCC areas.

### Pets



Pets can enter all SNFCC's outdoor areas except the Great Lawn, the Labyrinth, and the playgrounds. They should always be accompanied by their guardian, who must keep them under direct and constant supervision and clean up after them.

### Wi-Fi & Digital Services

Free Wi-Fi (SNFCC-FREE-WIFI) is provided at SNFCC. Computers for public use are available on the premises of the National Library of Greece. Moreover, visitors enjoy online access to over 5,000 newspapers and magazines in 60 different languages in digital form on [www.pressreader.com](http://www.pressreader.com).

### Photography

Photography on SNFCC premises is permitted exclusively for private use. For any commercial/promotional photo request, please email us at [info@snfcc.org](mailto:info@snfcc.org). Use of drones is prohibited for any purpose.

### Bank ATMs

Piraeus Bank and National Bank of Greece ATMs operate in SNFCC reception area.

### First-Aid

First-Aid and medical facilities staffed by health professionals are available for use by visitors on the premises.

### Food & Drink

Four food & drink service points are in operation in SNFCC:

Agora Bistro (Agora)  
08.00-00.00

Canal Café (Visitors Center)  
Monday-Sunday 09.00-00.00

Pharos Café (Pharos)  
Monday-Sunday 09.00-00.00  
\*\*Operating hours subject to change when the Lighthouse is hosting events

Park Kiosk (Park)  
Monday-Sunday 08.00-20.00



Mobile food carts are also available in outdoor areas alongside.

Coffee Van on tour: 09.00-21.00  
Juice Van on tour: 09.00-21.00

### Smoking

Based on the requirements of the LEED certification program earned by SNFCC, smoking is prohibited in all SNFCC indoor areas and within 8 meters of any building opening.

In all other SNFCC outdoor areas, smoking is not prohibited; visitors are asked to use the floor ashtrays available in the area. We encourage visitors to refrain from smoking while enjoying the Park.

### Environmental Management

SNFCC earned the Platinum LEED certification as a green building – the highest distinction for environmental and sustainable buildings. LEED certification was developed by the U.S. Green Building Council as the most widely recognized international green building certification system and is regarded as the highest possible distinction for environmentally friendly, sustainable buildings.

It certifies that a building has been designed and constructed following rigorous principles of sustainable construction and environmentally innovative practices that focus on water and energy efficiency, reduction of CO2 emissions, indoor environment quality, the rational management of resources. Platinum LEED certification is a unique and challenging distinction to achieve. SNFCC is the first cultural project of this scale to earn the LEED Platinum Certification in Europe.





YOUNG



MEMBER



SENIOR



FAMILY


 STAVROS  
 NIARCHOS  
 FOUNDATION  
 CULTURAL  
 CENTER  
 MEMBERSHIP  
 PROGRAM  
 ΚΕΝΤΡΟ  
 ΠΟΛΙΤΙΣΜΟΥ  
 ΙΔΡΥΜΑ  
 ΣΤΑΥΡΟΣ  
 ΝΙΑΡΧΟΣ  
 ΠΡΟΓΡΑΜΜΑ  
 ΜΕΛΩΝ

## Give the gift of membership to your loved ones!

This holiday season, give a membership as a gift to your loved ones and let them enjoy a unique experience.

SNFCC members enjoy exclusive benefits (including member-only events, discounts, ticket presales, backstage experiences, collectibles). Find out what we have in store for our members this Christmas in our brochure!

In addition, a special gift is awaiting every new member who joins during the holiday season!

For more information please visit our website at [snfcc.org/members](https://snfcc.org/members), check out the membership program brochure, call our exclusive Members Service Line **216 8091010**, or send us an email to [members@snfcc.org](mailto:members@snfcc.org).



The SNFCC Membership Program is implemented with the support of the Stavros Niarchos Foundation and developed in collaboration with the National Library of Greece and the Greek National Opera.

# Stavros Niarchos Foundation Cultural Center

364, Syggrou Avenue  
17673 Kallithea, Greece

(+30) 2168091000  
info@snfcc.org



#SNFCC



## Organization:



STAVROS  
NIARCHOS  
FOUNDATION  
CULTURAL  
CENTER

KENTRO  
ΠΟΛΙΤΙΣΜΟΥ  
ΙΔΡΥΜΑ  
ΣΤΑΥΡΟΣ  
ΝΙΑΡΧΟΣ

Εθνική Βιβλιοθήκη  
της Ελλάδος  National  
Library  of Greece

## Exclusive donor:



ΙΔΡΥΜΑ ΣΤΑΥΡΟΣ ΝΙΑΡΧΟΣ  
STAVROS NIARCHOS FOUNDATION

